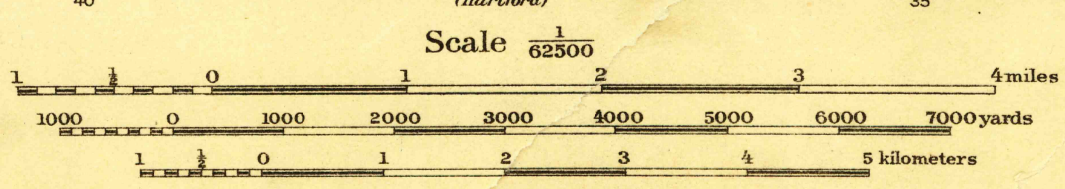
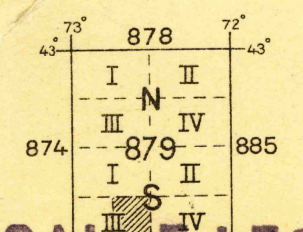


Field work and compilation under the direction of Col. H. Taylor, Corps of Engineers, U.S.A., Department Engineer, Eastern Department, Nov. 1915.
Field work under the immediate supervision of Capt. W. H. Paine, 2nd Cavalry, U.S.A., 2nd Lieut. F. R. Hunter, 2nd Cavalry, U.S.A.
Corrected under the direction of, Col. F. R. Shunk, C. of E., U.S.A., Dept. Engineer, Northeastern Dept., Jan. 1919.
Base map from U.S.G.S. engravings. Corrections and additions by Department Engineer, Eastern Department.



Contour Interval 20 feet
Datum is mean sea level

NOTE: OFFICERS USING THIS MAP WILL MARK HEREON CORRECTIONS AND ADDITIONS WHICH COME TO THEIR ATTENTION AND MAIL DIRECT TO 'THE CHIEF OF ENGINEERS, WASHINGTON, D.C.'



HISTORICAL FILES

(DO NOT REMOVE COPY)

RETURN TO CENTRAL FILE