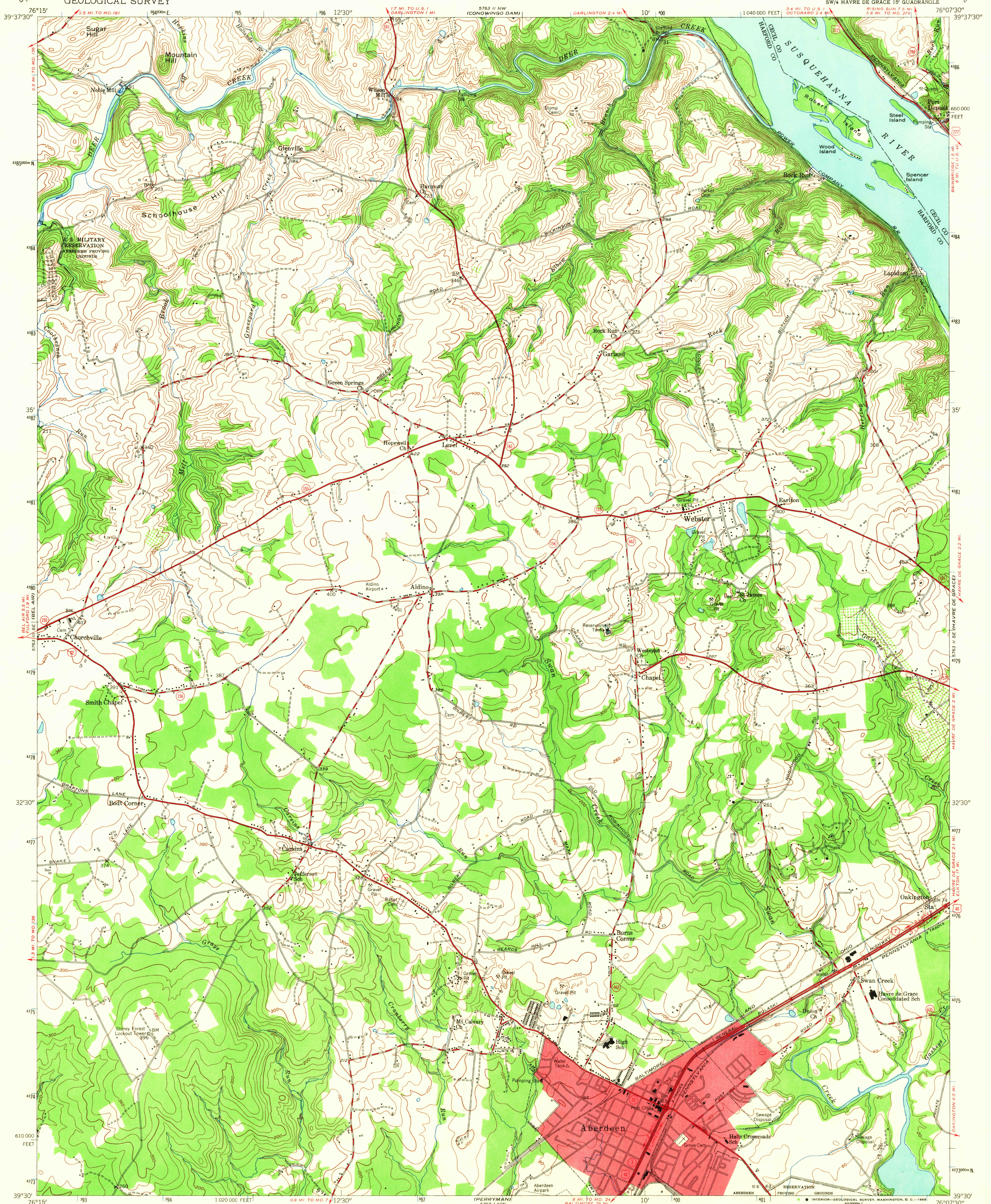


UNITED STATES  
DEPARTMENT OF THE INTERIOR  
GEOLOGICAL SURVEY

ABERDEEN QUADRANGLE  
MARYLAND  
7.5 MINUTE SERIES (TOPOGRAPHIC)  
SW/4 HAVRE DE GRACE 15' QUADRANGLE



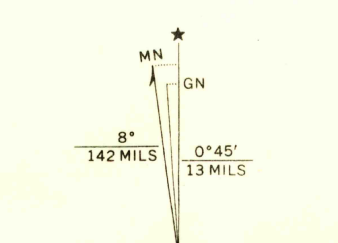
Mapped, edited, and published by the Geological Survey  
Control by USGS and USC&GS

Culture and drainage in part compiled from aerial photographs  
taken 1952. Topography enlarged from 1:62,500 scale map of  
Havre de Grace quadrangle, 15 minute series. Original map by  
plane-table surveys 1939-1940. Revised 1953

Polyconic projection. 1927 North American datum  
10,000-foot grid based on Maryland coordinate system

Red tint indicates area in which only  
landmark buildings are shown

1000-meter Universal Transverse Mercator grid ticks,  
zone 18, shown in blue



CONTOUR INTERVAL 20 FEET  
DATUM IS MEAN SEA LEVEL

THIS MAP COMPLIES WITH NATIONAL MAP ACCURACY STANDARDS  
FOR SALE BY U. S. GEOLOGICAL SURVEY, WASHINGTON, D. C. 20242  
A FOLDER DESCRIBING TOPOGRAPHIC MAPS AND SYMBOLS IS AVAILABLE ON REQUEST

USGS  
Historical File  
Topographic Division

U.S.G.S.  
FILE COPY  
TOPOGRAPHIC DIVISION

ROAD CLASSIFICATION  
Heavy-duty 4 LANE 16 LANE Light-duty  
Medium-duty 4 LANE 16 LANE Unimproved dirt  
U.S. Route State Route

ABERDEEN, MD.  
SW/4 HAVRE DE GRACE 15' QUADRANGLE  
N3930-W7607.5/7.5

1953

AMS 5763 II SW-SERIES V833

2675  
OCT 28 1968