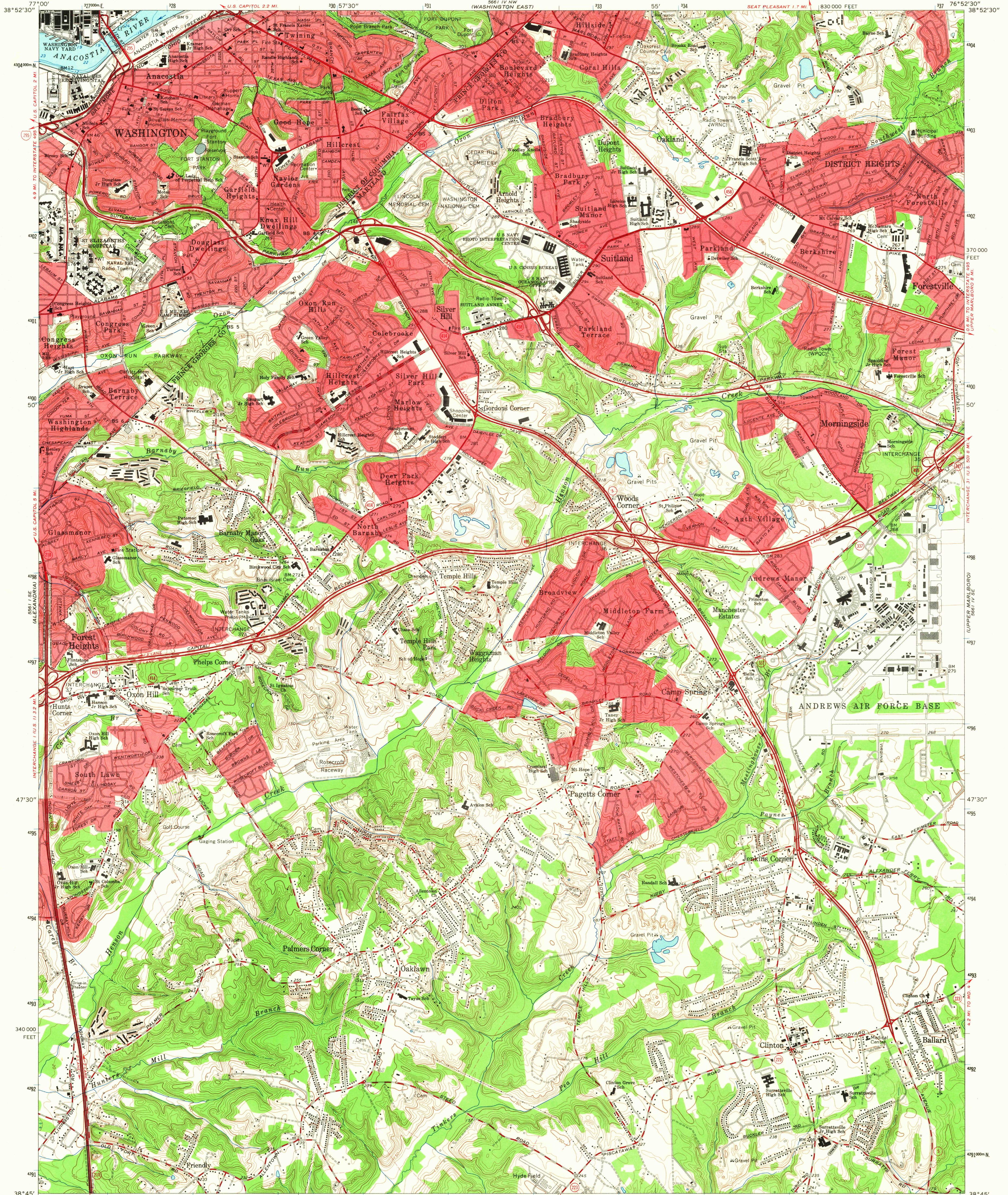
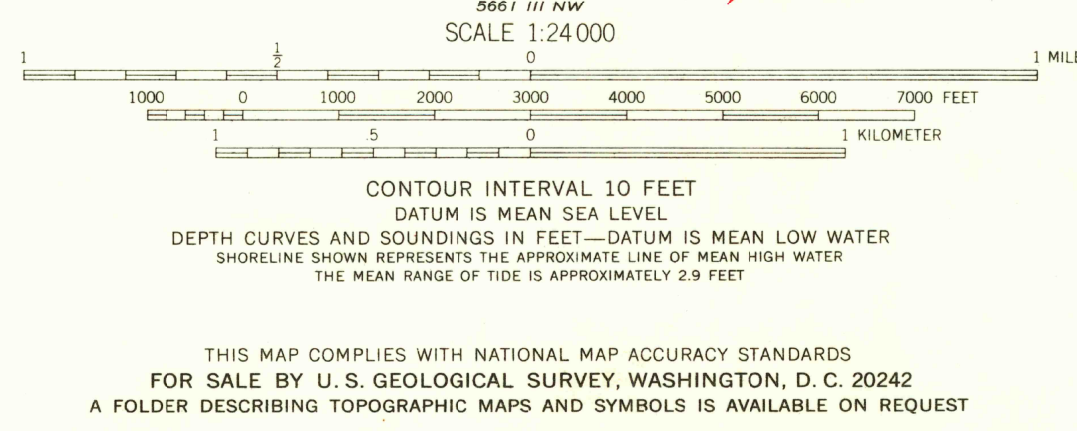
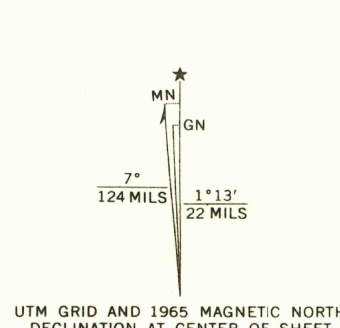


UNITED STATES  
DEPARTMENT OF THE INTERIOR  
GEOLOGICAL SURVEY

ANACOSTIA QUADRANGLE  
MARYLAND—DISTRICT OF COLUMBIA  
7.5 MINUTE SERIES (TOPOGRAPHIC)



Maped, edited, and published by the Geological Survey  
Control by USGS, USC&GS, USCE, NCPS, and WSSC  
Topography by photogrammetric methods from aerial photographs  
taken 1955. Field checked 1956. Revised 1965  
Selected hydrographic data compiled from USC&GS Chart 560 (1965)  
This information is not intended for navigational purposes  
Polyconic projection. 1927 North American datum  
10,000-foot grid based on Maryland coordinate system  
1000-meter Universal Transverse Mercator grid ticks,  
zone 18, shown in blue  
Red tint indicates areas in which only landmark buildings are shown  
Fine red dashed lines indicate selected fence and field lines where  
generally visible on aerial photographs. This information is unchecked



USGS  
Historical File  
Topographic Division



ROAD CLASSIFICATION  
Heavy-duty ——— Light-duty ———  
Medium-duty ——— Unimproved dirt ———  
○ Interstate Route ○ State Route  
U.S.G.S.  
ANACOSTIA, MD.—D.C.  
N3845—W7652.5/7.5  
1965  
AMS 5661 IV SW—SERIES V833

RETURN TO:  
USGS AND HISTORICAL MAP ARCHIVES