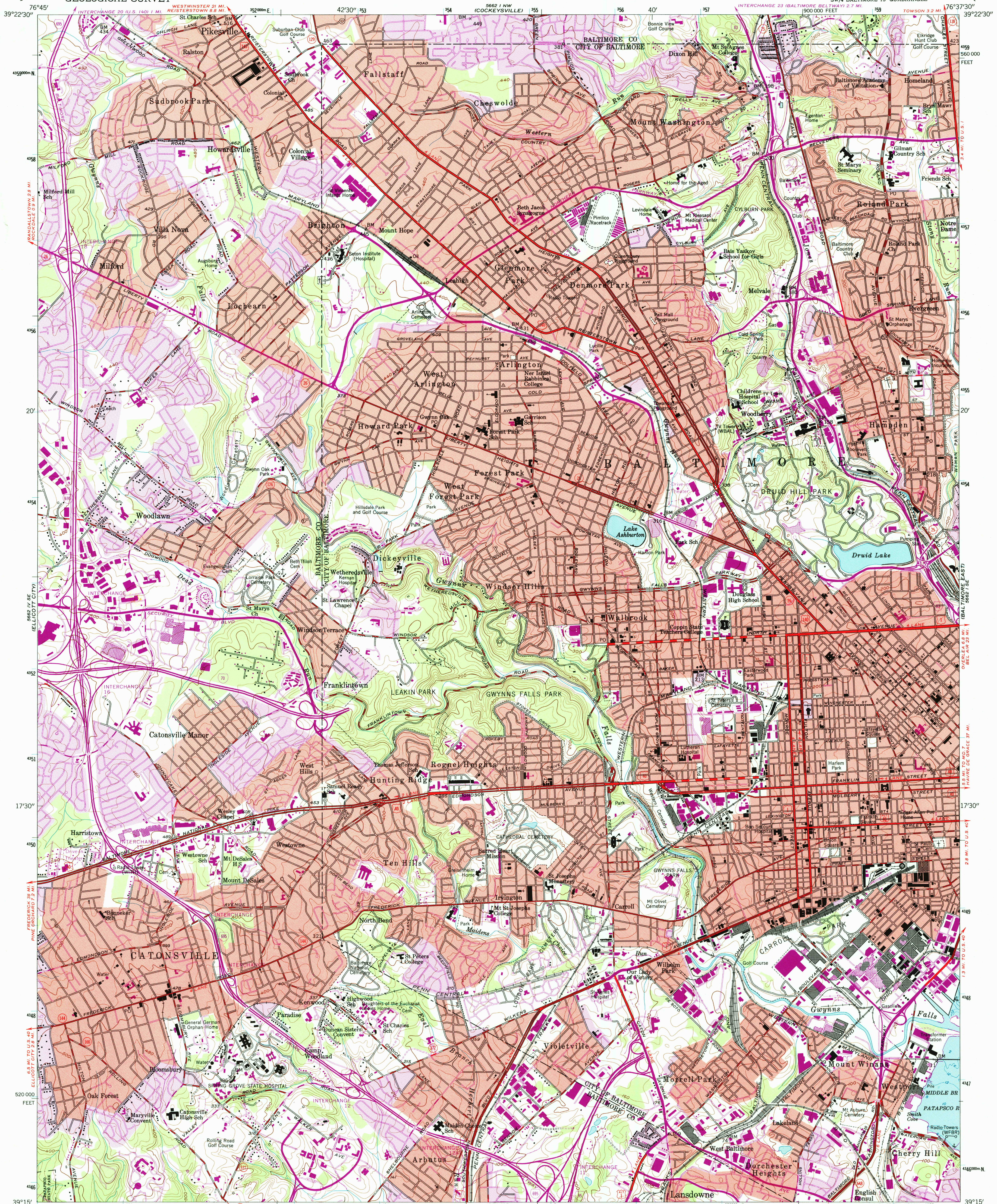
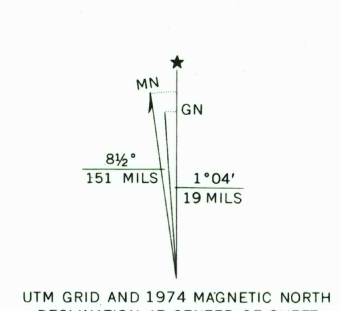


UNITED STATES
DEPARTMENT OF THE INTERIOR
GEOLOGICAL SURVEY

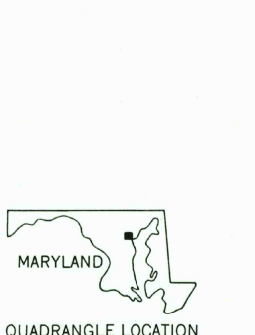
BALTIMORE WEST QUADRANGLE
MARYLAND
7.5 MINUTE SERIES (TOPOGRAPHIC)
SW/4 BALTIMORE 15' QUADRANGLE



Maped by the Army Map Service
Edited and published by the Geological Survey
Control by USGS, USC&GS, USCE, and City of Baltimore
Topography from aerial photographs by photogrammetric methods
Aerial photographs taken 1943. Field checked 1944
Culture revised by the Geological Survey 1953
Hydrography from USC&GS Chart 545 (1942)
Polyconic projection. 1927 North American datum
10,000-foot grid based on Maryland coordinate system,
1000-meter Universal Transverse Mercator grid ticks,
zone 18, shown in blue
Red tint indicates areas in which only landmark buildings are shown
Unchecked elevations are shown in brown
Revisions shown in purple compiled by the Geological Survey from
aerial photographs taken 1966 and 1974. This information not field checked
Purple tint indicates extension of urban areas



CONTOUR INTERVAL 20 FEET
NATIONAL GEODETIC VERTICAL DATUM OF 1929
DEPTH CURVES AND SOUNDINGS IN FEET—DATUM IS MEAN LOW WATER
SHORELINE SHOWN REPRESENTS THE APPROXIMATE LINE OF MEAN HIGH WATER
THE MEAN RANGE OF TIDE IS APPROXIMATELY 1.1 FEET
THIS MAP COMPLIES WITH NATIONAL MAP ACCURACY STANDARDS
FOR SALE BY U.S. GEOLOGICAL SURVEY
DENVER, COLORADO 80225, OR RESTON, VIRGINIA 22092
A FOLDER DESCRIBING TOPOGRAPHIC MAPS AND SYMBOLS IS AVAILABLE ON REQUEST



ROAD CLASSIFICATION
Heavy-duty ——— Light-duty ———
Medium-duty ——— Unimproved dirt ———
Interstate Route U.S. Route State Route
BALTIMORE WEST, MD.
SW/4 BALTIMORE 15' QUADRANGLE
N3915-W7637.5/7.5
1953
PHOTOREVISED 1966 AND 1974
AMS 5662 1 SW—SERIES V833

