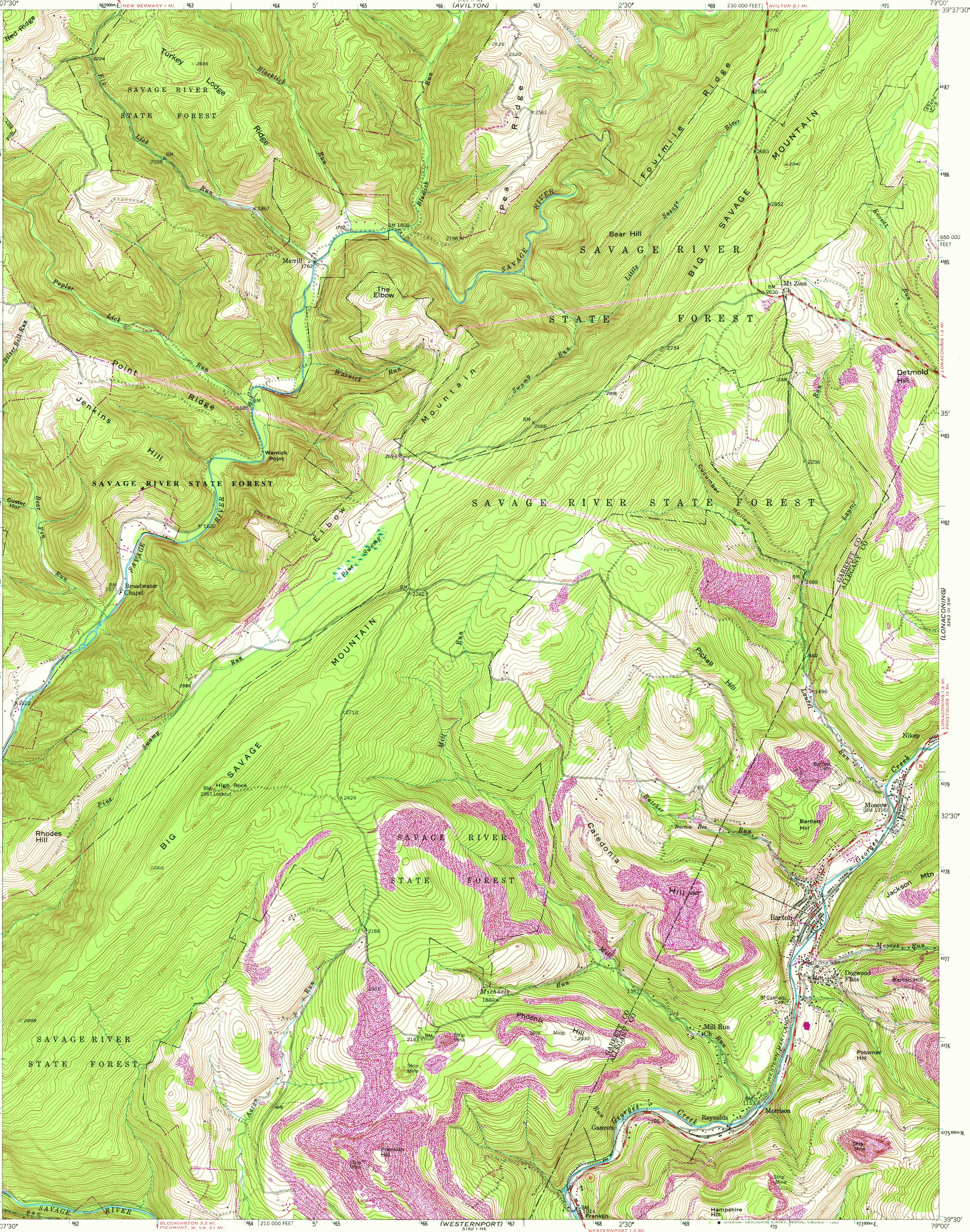


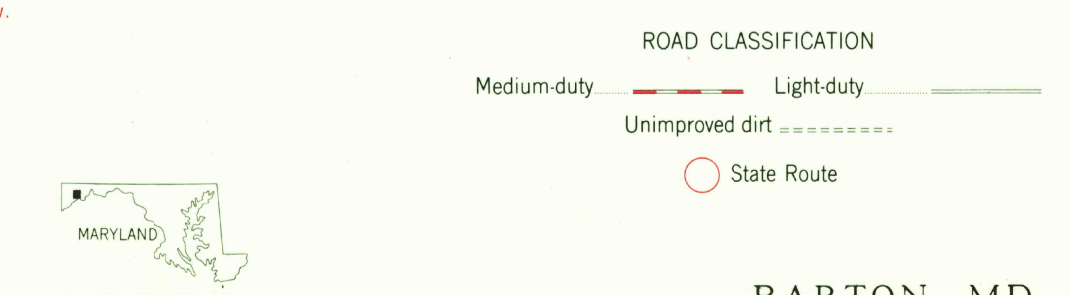
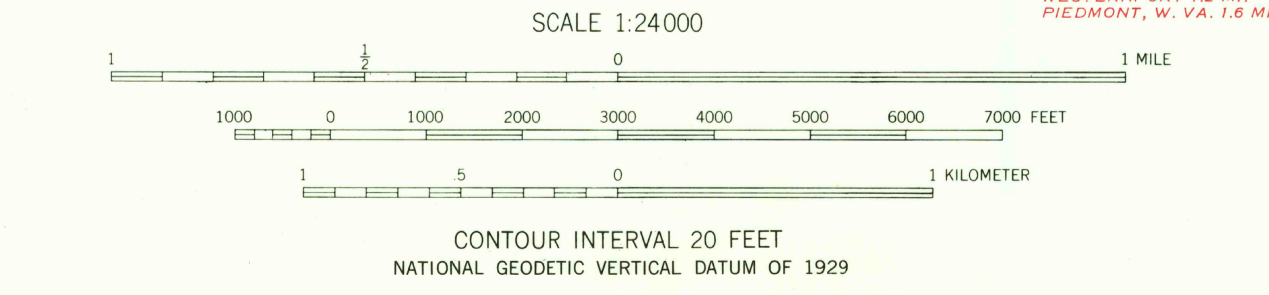
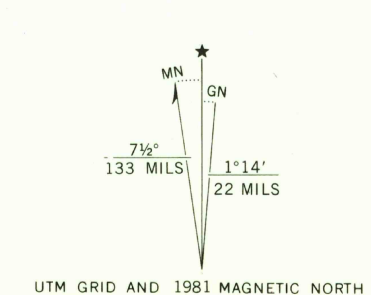
UNITED STATES  
DEPARTMENT OF THE INTERIOR  
GEOLOGICAL SURVEY

STATE OF MARYLAND  
MARYLAND GEOLOGICAL SURVEY

BARTON QUADRANGLE  
MARYLAND  
7.5 MINUTE SERIES (TOPOGRAPHIC)



Mapped, edited, and published by the Geological Survey  
Control by USGS  
Topography by photogrammetric methods from aerial  
photographs taken 1946. Field checked 1947  
Polyconic projection. 10,000-foot grid ticks based on  
Maryland coordinate system. 1000-meter Universal  
Transverse Mercator grid ticks, zone 17, shown in blue  
1927 North American Datum. To place on the predicted  
North American Datum 1983 move the projection lines  
6 meters south and 21 meters west as shown by  
dashed corner ticks  
There may be private inholdings within the boundaries of  
the National or State reservations shown on this map  
Revisions shown in purple and woodland compiled  
from aerial photographs taken 1979 and other sources  
This information not field checked. Map edited 1981



BARTON, MD.  
N3930-W7900/7.5

1947  
PHOTOREVISION 1981  
DMA 5163 II SE-SERIES V833

THIS MAP COMPLIES WITH NATIONAL MAP ACCURACY STANDARDS  
FOR SALE BY U.S. GEOLOGICAL SURVEY, RESTON, VIRGINIA 22092  
A FOLDER DESCRIBING TOPOGRAPHIC MAPS AND SYMBOLS IS AVAILABLE ON REQUEST

SEP 16 1982

3700