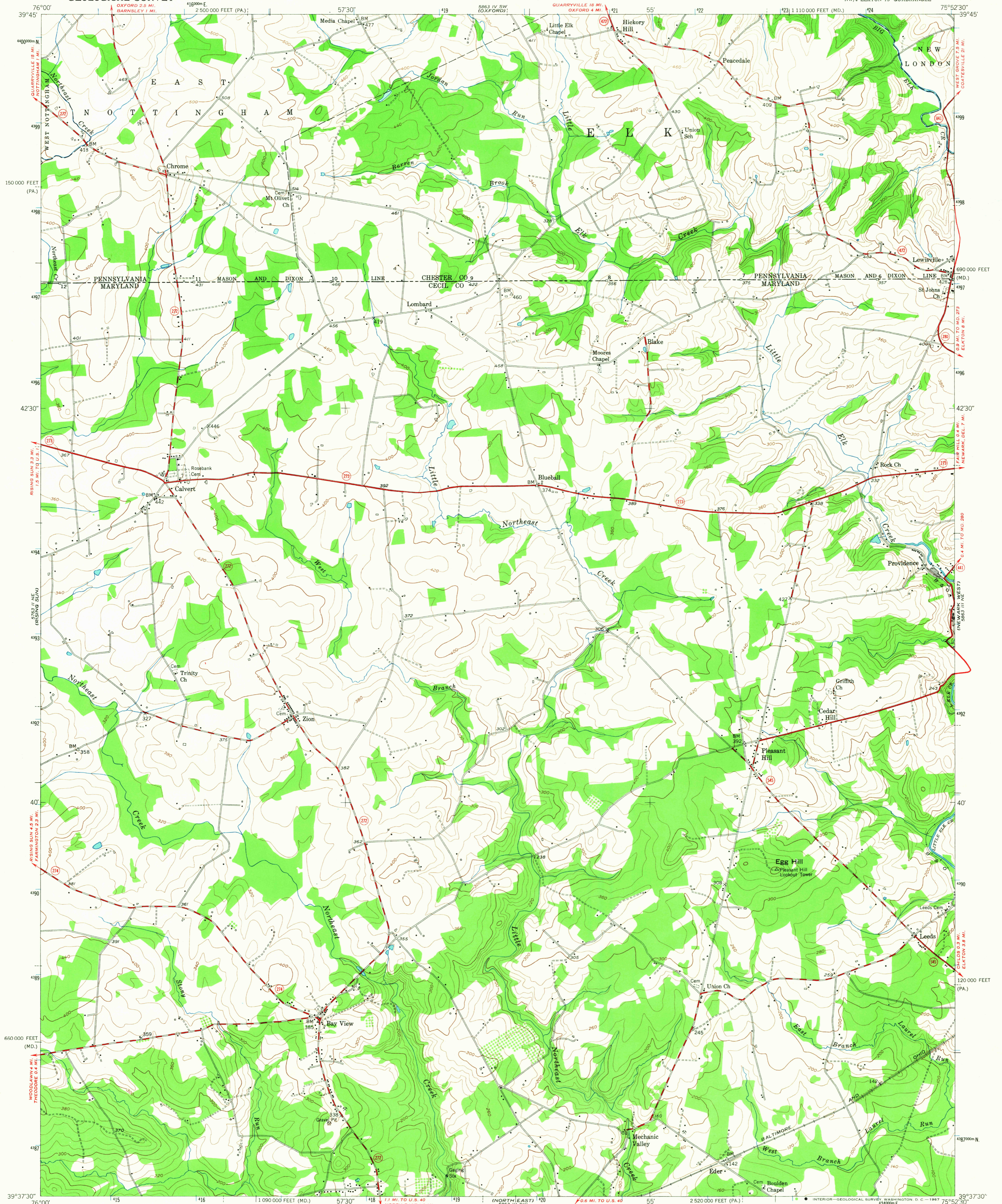
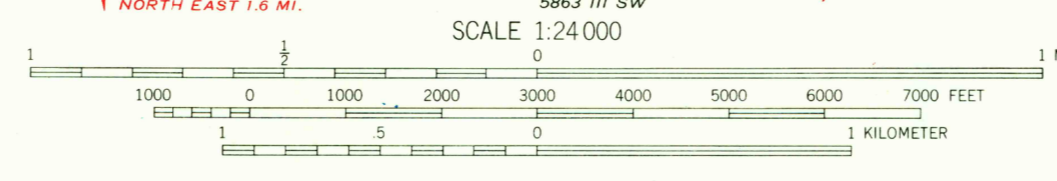
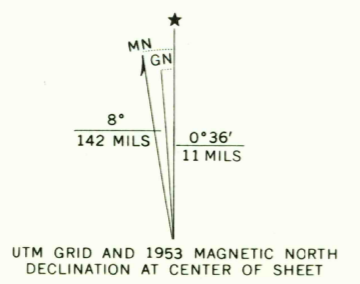


UNITED STATES
DEPARTMENT OF THE INTERIOR
GEOLOGICAL SURVEY

BAY VIEW QUADRANGLE
MARYLAND—PENNSYLVANIA
7.5 MINUTE SERIES (TOPOGRAPHIC)
NW/4 ELKTON 15' QUADRANGLE



Mapped, edited, and published by the Geological Survey
Control by USGS and USC&GS
Culture and drainage in part compiled from aerial photographs taken 1952. Topography by plane-table surveys 1939 and 1940. Revised 1953.
Polyconic projection. 1927 North American datum. 10,000-foot grids based on Maryland coordinate system, and Pennsylvania coordinate system, south zone. 1000-meter Universal Transverse Mercator grid ticks, zone 18, shown in blue.



USGS
Historical File
Topographic Division

ROAD CLASSIFICATION

Heavy-duty	4 LANE 16 LANE	Light-duty
Medium-duty	2 LANE 16 LANE	Unimproved dirt
U. S. Route		State Route



U.S.G.S.
FILE COPY
TOPOGRAPHIC DIVISION

BAY VIEW, MD.—PA.
NW/4 ELKTON 15' QUADRANGLE
N9377.5—W7552.5/7.5

1953
AMS 5863 III NW—SERIES V833

2570
JAN 28 1967