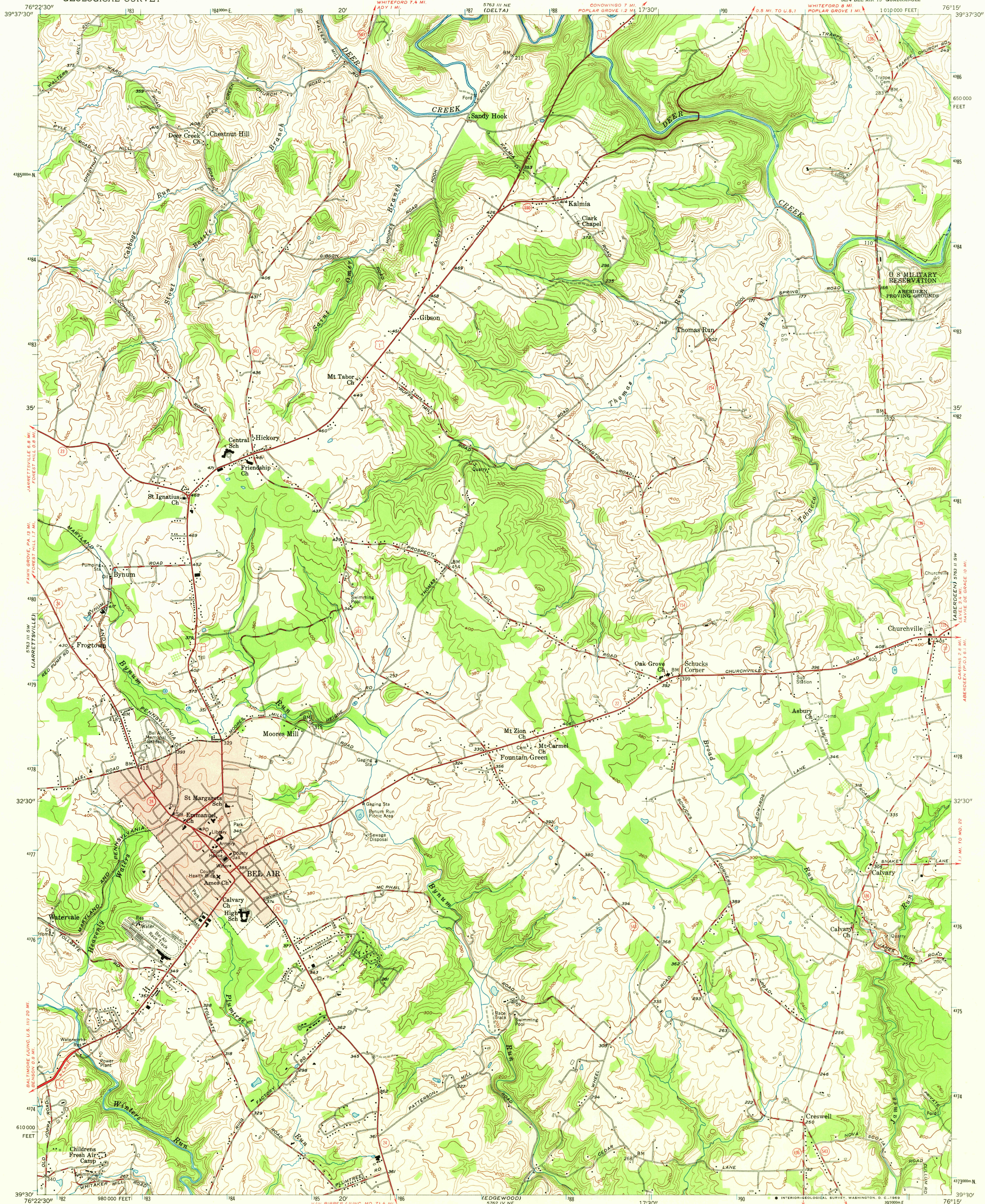
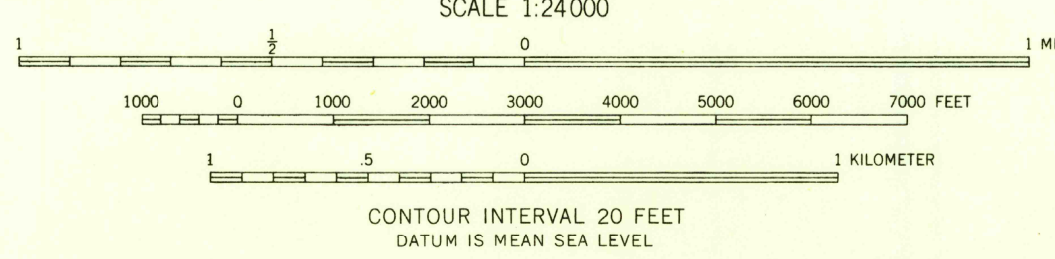
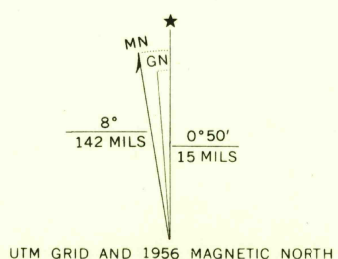


UNITED STATES
DEPARTMENT OF THE INTERIOR
GEOLOGICAL SURVEY

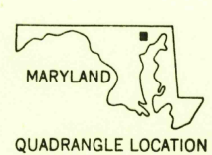
BEL AIR QUADRANGLE
MARYLAND—HARFORD CO.
7.5 MINUTE SERIES (TOPOGRAPHIC)
SE/4 BEL AIR 15' QUADRANGLE



Mapped, edited, and published by the Geological Survey
Control by USGS, USCGS, and USCE
Topography from aerial photographs by photogrammetric
methods. Aerial photographs taken 1955. Field check 1956
Polyconic projection. 1927 North American datum
10,000-foot grid based on Maryland coordinate system
1000-meter Universal Transverse Mercator grid ticks,
zone 18, shown in blue
Red tint indicates areas in which only
landmark buildings are shown



USGS
Historical File
Topographic Division



ROAD CLASSIFICATION
Heavy-duty ——— Light-duty ———
Medium-duty ——— Unimproved dirt ———
U.S. Route ——— State Route ———

U.S.G.S.
FILE COPY
TOPOGRAPHIC DIVISION

BEL AIR, MD.
SE/4 BEL AIR 15' QUADRANGLE
N3930-W7615/7.5
1956

THIS MAP COMPLIES WITH NATIONAL MAP ACCURACY STANDARDS
FOR SALE BY U. S. GEOLOGICAL SURVEY, WASHINGTON, D. C. 20242
A FOLDER DESCRIBING TOPOGRAPHIC MAPS AND SYMBOLS IS AVAILABLE ON REQUEST

AMS 5763 III SE—SERIES V833

3352
JUN 9 1969