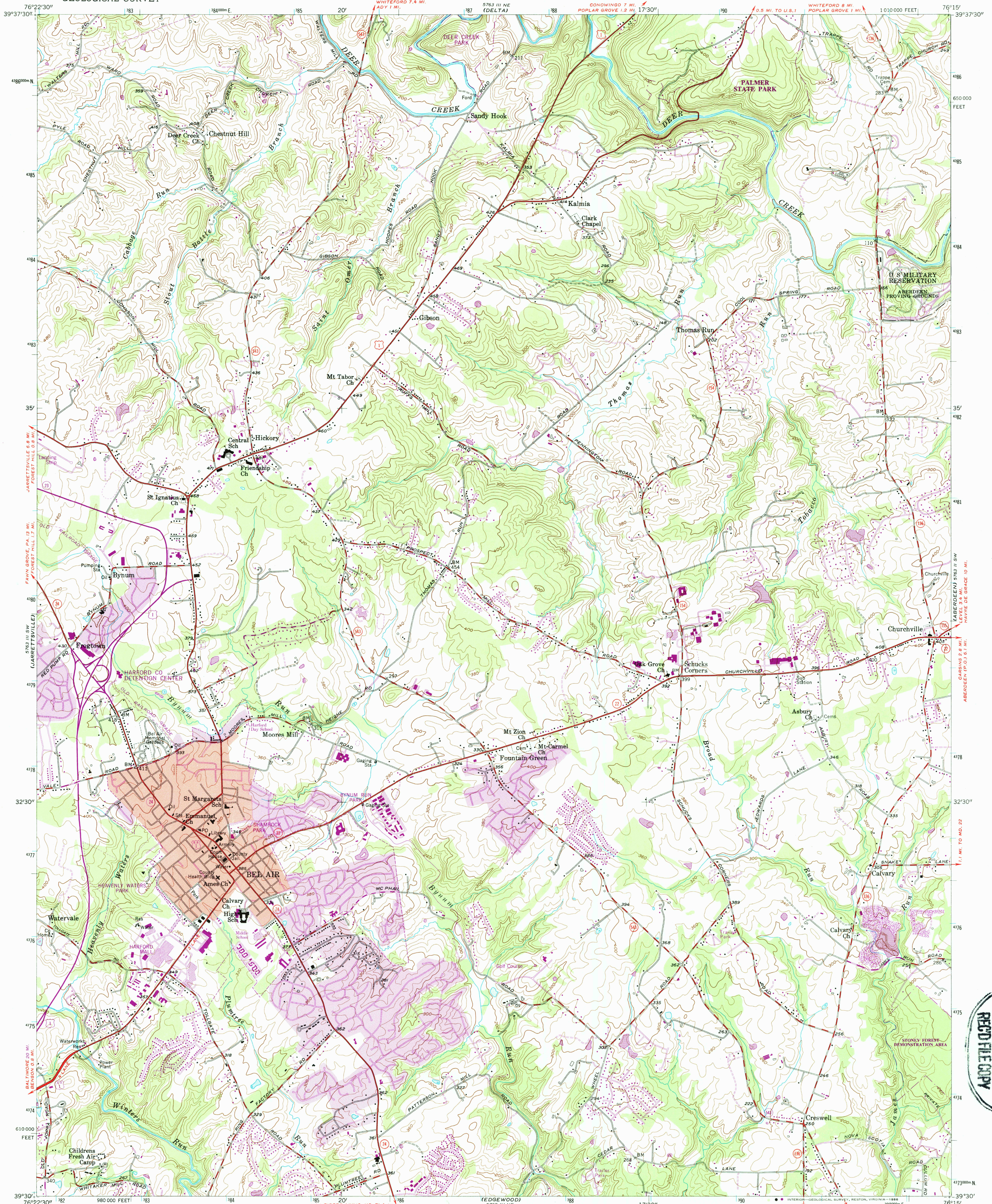


UNITED STATES
DEPARTMENT OF THE INTERIOR
GEOLOGICAL SURVEY

BEL AIR QUADRANGLE
MARYLAND—HARFORD CO.
7.5 MINUTE SERIES (TOPOGRAPHIC)



USGS HISTORICAL MAP
MAR 19 1987
REC'D FILE COPY

Mapped, edited, and published by the Geological Survey

Control by USGS, NOS/NOAA, and USCE

Topography by photogrammetric methods from aerial

photographs taken 1955. Field checked 1956

Polyconic projection. 10,000-foot grid ticks based on

Maryland coordinate system

1000-meter Universal Transverse Mercator grid ticks,

zone 18, shown in blue

1927 North American Datum

To place on the predicted North American Datum 1983

move the projection lines 7 meters south and

28 meters west as shown by dashed corner ticks

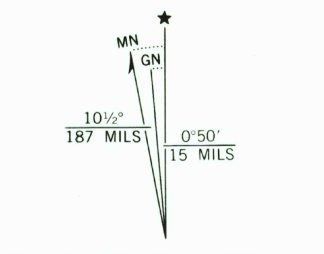
Red tint indicates areas in which only

landmark buildings are shown

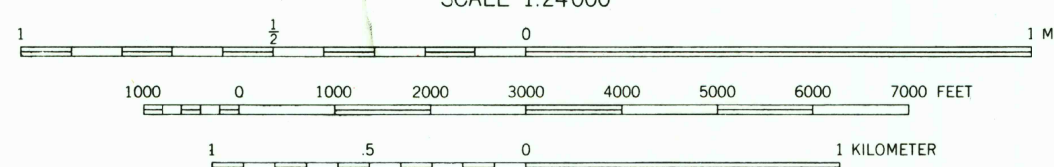
There may be private inholdings within the boundaries

of the National or State reservations shown on this map

Revisions shown in purple and woodland compiled
from aerial photographs taken 1983 and other sources
This information not field checked. Map edited 1986
Purple tint indicates extension of urban areas



SCALE 1:24000



CONTOUR INTERVAL 20 FEET
NATIONAL GEODETIC VERTICAL DATUM OF 1929

THIS MAP COMPLIES WITH NATIONAL MAP ACCURACY STANDARDS
FOR SALE BY U.S. GEOLOGICAL SURVEY, RESTON, VIRGINIA 22092
A FOLDER DESCRIBING TOPOGRAPHIC MAPS AND SYMBOLS IS AVAILABLE ON REQUEST



QUADRANGLE LOCATION

ROAD CLASSIFICATION

Heavy-duty ——— Light-duty ———

Medium-duty ——— Unimproved dirt ———

U.S. Route ——— State Route ———

BEL AIR, MD.
39076-E3-TF-024

1956
PHOTOREVISED 1986
DMA 5763 III SE—SERIES V835