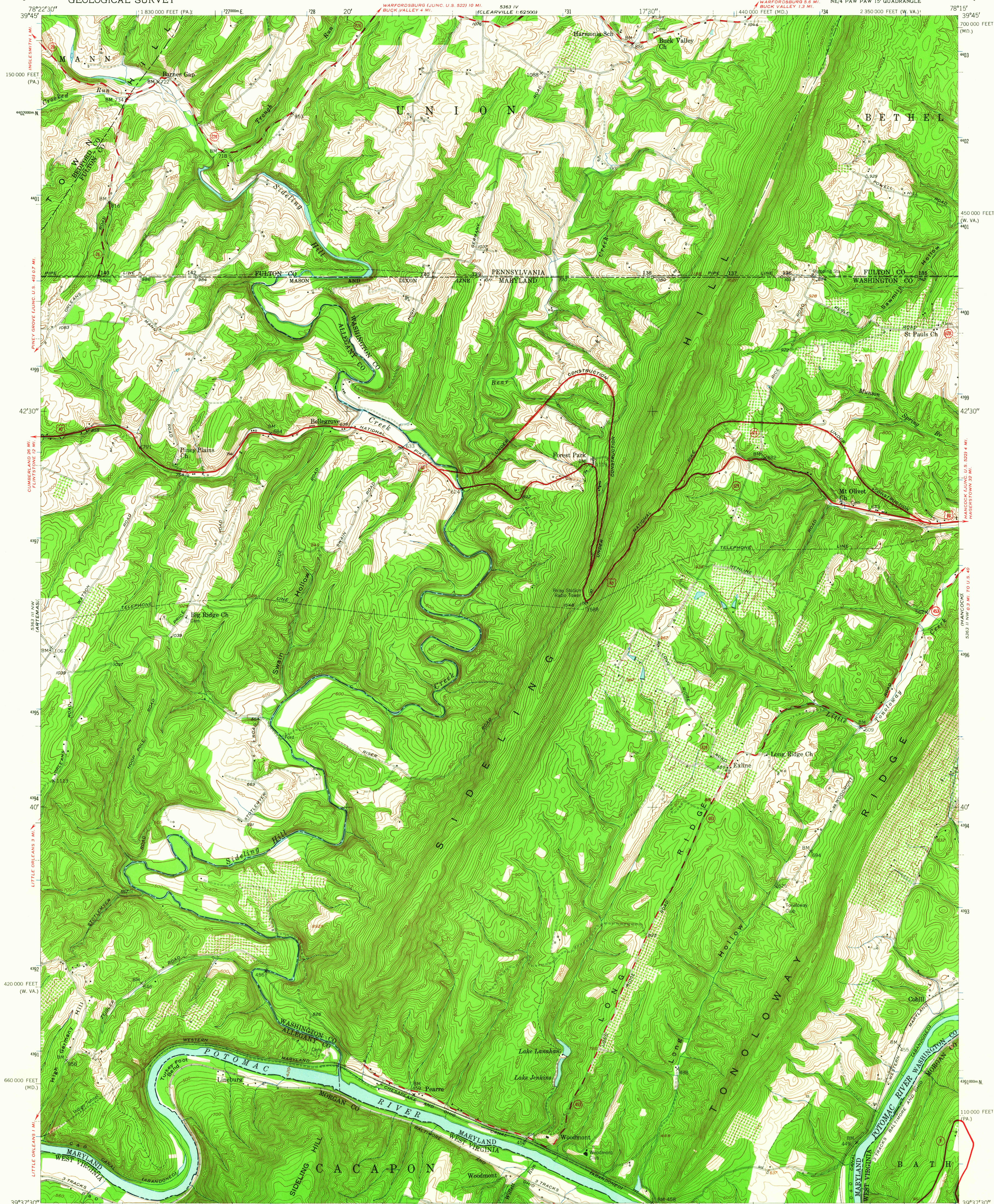
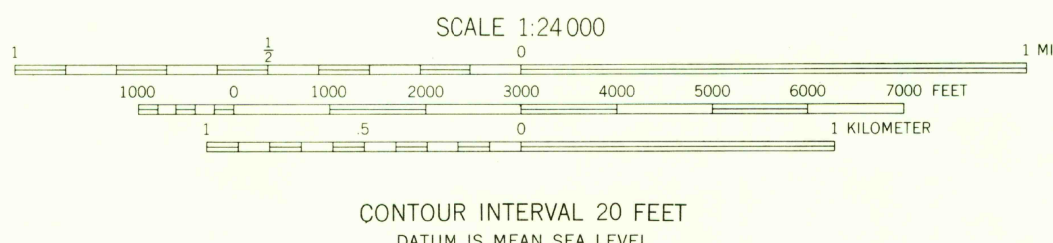
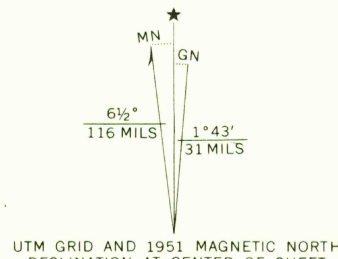


UNITED STATES
DEPARTMENT OF THE INTERIOR
GEOLOGICAL SURVEY

BELLE GROVE QUADRANGLE
MARYLAND-PENNSYLVANIA-WEST VIRGINIA
7.5 MINUTE SERIES (TOPOGRAPHIC)
NE/4 PAW PAW 15' QUADRANGLE



Mapped, edited, and published by the Geological Survey
Control by USGS and USC&GS
Topography from aerial photographs by multiplex methods
Aerial photographs taken 1947. Field check 1951
Polyconic projection. 1927 North American datum
10,000-foot grids based on Maryland coordinate system,
Pennsylvania coordinate system, south zone, and
West Virginia coordinate system, north zone
1000 meter Universal Transverse Mercator grid ticks,
zone 17, shown in blue



THIS MAP COMPLIES WITH NATIONAL MAP ACCURACY STANDARDS
FOR SALE BY U. S. GEOLOGICAL SURVEY, WASHINGTON, D. C. 20242
A FOLDER DESCRIBING TOPOGRAPHIC MAPS AND SYMBOLS IS AVAILABLE ON REQUEST

USGS
Historical File
Topographic Division

ROAD CLASSIFICATION
Heavy-duty 4 LANE 6 LANE Light-duty
Medium-duty 4 LANE 6 LANE Unimproved dirt
U. S. Route State Route

U.S.G.S.
FILE COPY
TOPOGRAPHIC DIVISION

BELLE GROVE, MD.-PA.-W. VA.
NE/4 PAW PAW 15' QUADRANGLE
N3937.5-W7815/7.5
1951
AMS 5363 III NE-SERIES V833

JUN 10 1965