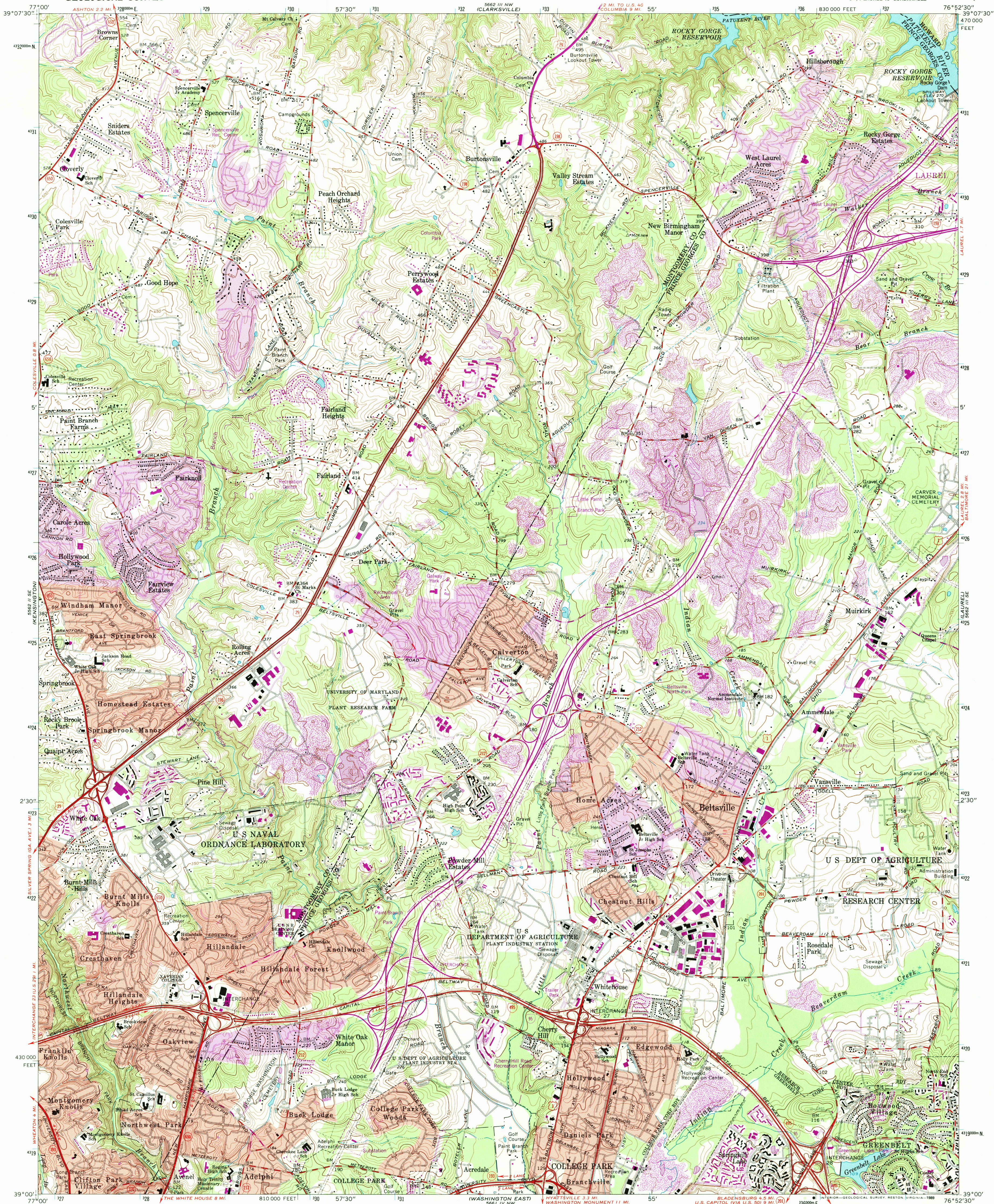


UNITED STATES
DEPARTMENT OF THE INTERIOR
GEOLOGICAL SURVEY

BELTSVILLE QUADRANGLE
MARYLAND
7.5 MINUTE SERIES (TOPOGRAPHIC)



Mapped, edited, and published by the Geological Survey

Control by USGS, USC&GS, USSCS, and WSSC

Topography by photogrammetric methods from aerial photographs

taken 1955. Field checked 1956. Revised 1964

Polyconic projection. 1927 North American datum

10,000-foot grid based on Maryland coordinate system

1000-meter Universal Transverse Mercator grid ticks, zone 18,

shown in blue

Fine red dashed lines indicate selected fence and field lines where

generally visible on aerial photographs. This information is unchecked

Red tint indicates areas in which only landmark buildings are shown

There may be private inholdings within the boundaries of the

National or State reservations shown on this map

Revisions shown in purple compiled from aerial

photographs taken 1977 and other source data

This information not field checked. Map edited 1979

UTM GRID AND 1979 MAGNETIC NORTH

DECLINATION AT CENTER OF SHEET

To place on the predicted North American Datum 1983,

move the projection lines 8 meters south and

26 meters west as shown by dashed corner ticks

THIS MAP COMPLIES WITH NATIONAL MAP ACCURACY STANDARDS

FOR SALE BY U.S. GEOLOGICAL SURVEY

DENVER, COLORADO 80225, OR RESTON, VIRGINIA 22092

A FOLDER DESCRIBING TOPOGRAPHIC MAPS AND SYMBOLS IS AVAILABLE ON REQUEST

ROAD CLASSIFICATION

Heavy-duty ——— Light-duty ———

Medium-duty ——— Unimproved dirt ———

Interstate Route U.S. Route State Route

BELTSVILLE, MD.

SW 1/4 LAUREL 15' QUADRANGLE

39076-A8-7F-024

1964

PHOTOREVISED 1979

DMA 5662 III SW-SERIES V833

REC'D FILE COPY

USGS NMD HISTORICAL MAP

AUG 14 1989