

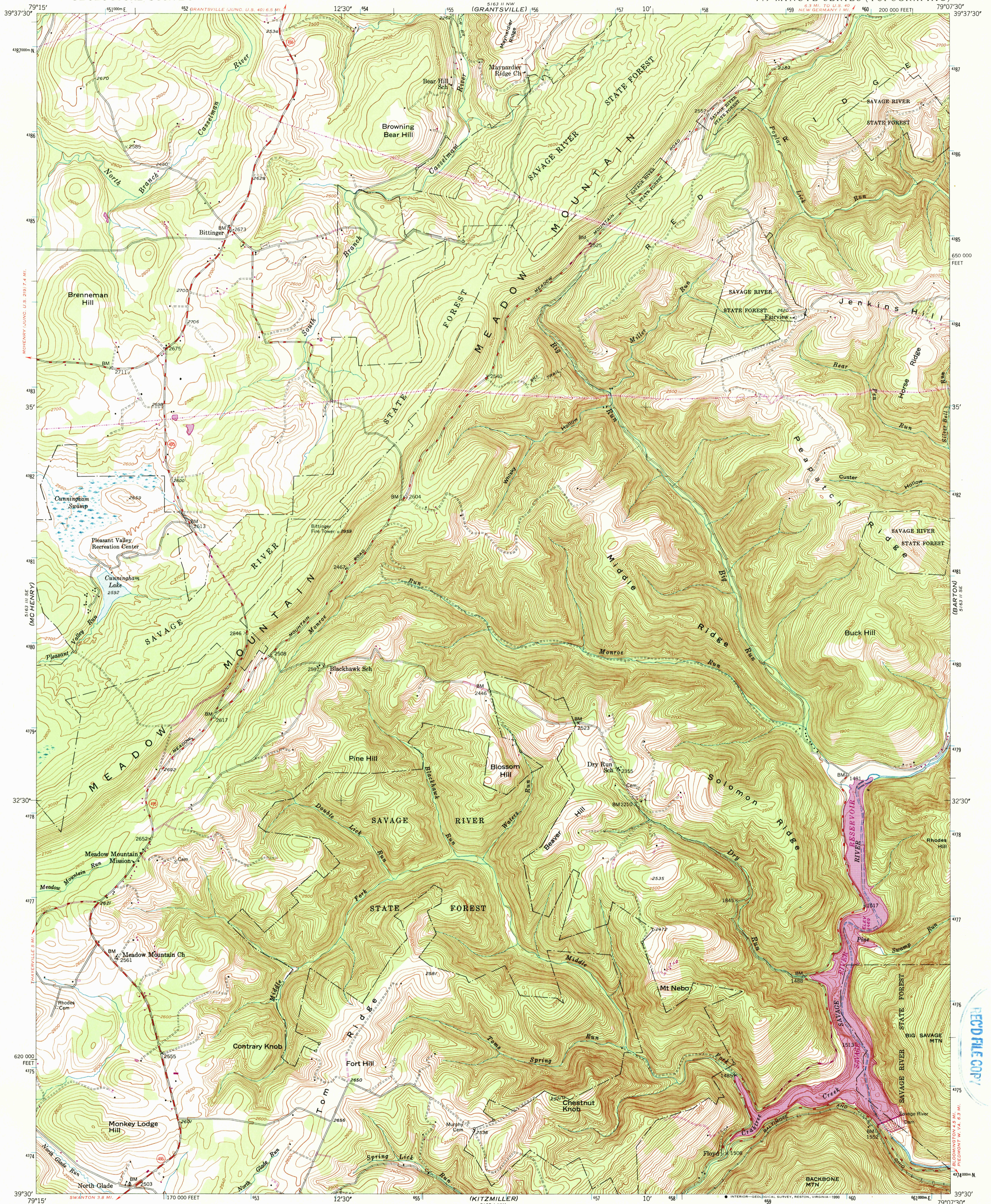
(ACCIDENT)

UNITED STATES
DEPARTMENT OF THE INTERIOR
GEOLOGICAL SURVEY

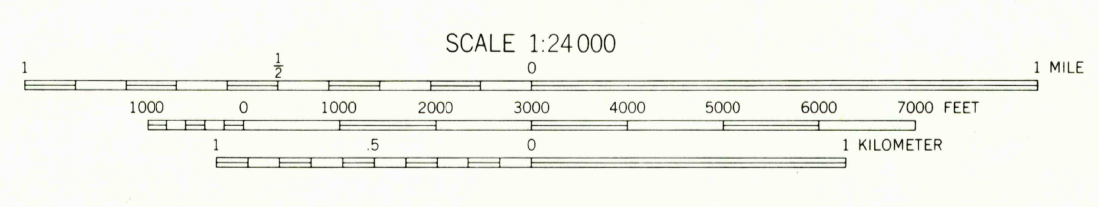
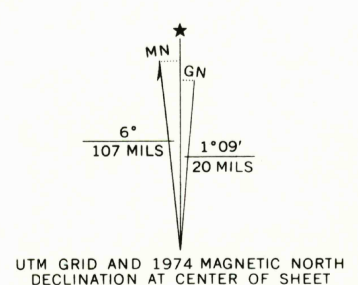
STATE OF MARYLAND
MARYLAND GEOLOGICAL SURVEY

BITTINGER QUADRANGLE
MARYLAND-GARRETT CO.
7.5 MINUTE SERIES (TOPOGRAPHIC)

(AVILTON)



Mapped, edited, and published by the Geological Survey
Control by USGS and NOS/NOAA
Topography from aerial photographs by multiplex methods
Aerial photographs taken 1946. Field check, 1947
Polyconic projection. 1927 North American datum
10,000 foot grid based on Maryland coordinate system
1000-meter Universal Transverse Mercator grid ticks,
zone 17, shown in blue
Extent of state forest areas uncertain
Revisions shown in purple compiled from aerial photographs
taken 1974. This information not field checked
Map photoinspected 1979
No major culture or drainage changes observed



CONTOUR INTERVAL 20 FEET
NATIONAL GEODETIC VERTICAL DATUM OF 1929
THIS MAP COMPLIES WITH NATIONAL MAP ACCURACY STANDARDS
FOR SALE BY U.S. GEOLOGICAL SURVEY
DENVER, COLORADO 80225, OR RESTON, VIRGINIA 22092
A FOLDER DESCRIBING TOPOGRAPHIC MAPS AND SYMBOLS IS AVAILABLE ON REQUEST



ROAD CLASSIFICATION

HARD-SURFACE ALL WEATHER ROADS	DRY WEATHER ROADS
Heavy-duty, 4 LANE LANE	Improved dirt,
Medium-duty, 4 LANE LANE	Unimproved dirt,
Loose-surface, graded, or narrow hard-surface, - - -	
U. S. Route	State Route

BITTINGER, MD.
N3930-W7907.5/7.5
PHOTOINSPECTED 1979
E 1947
PHOTOREVISED 1974
AMS 5163 II SW-SERIES V833

REPRODUCTION OF
OCT 17 1990
AND HISTORICAL DATA
FILE COPY

(DEER PARK)

(WESTERVORT)