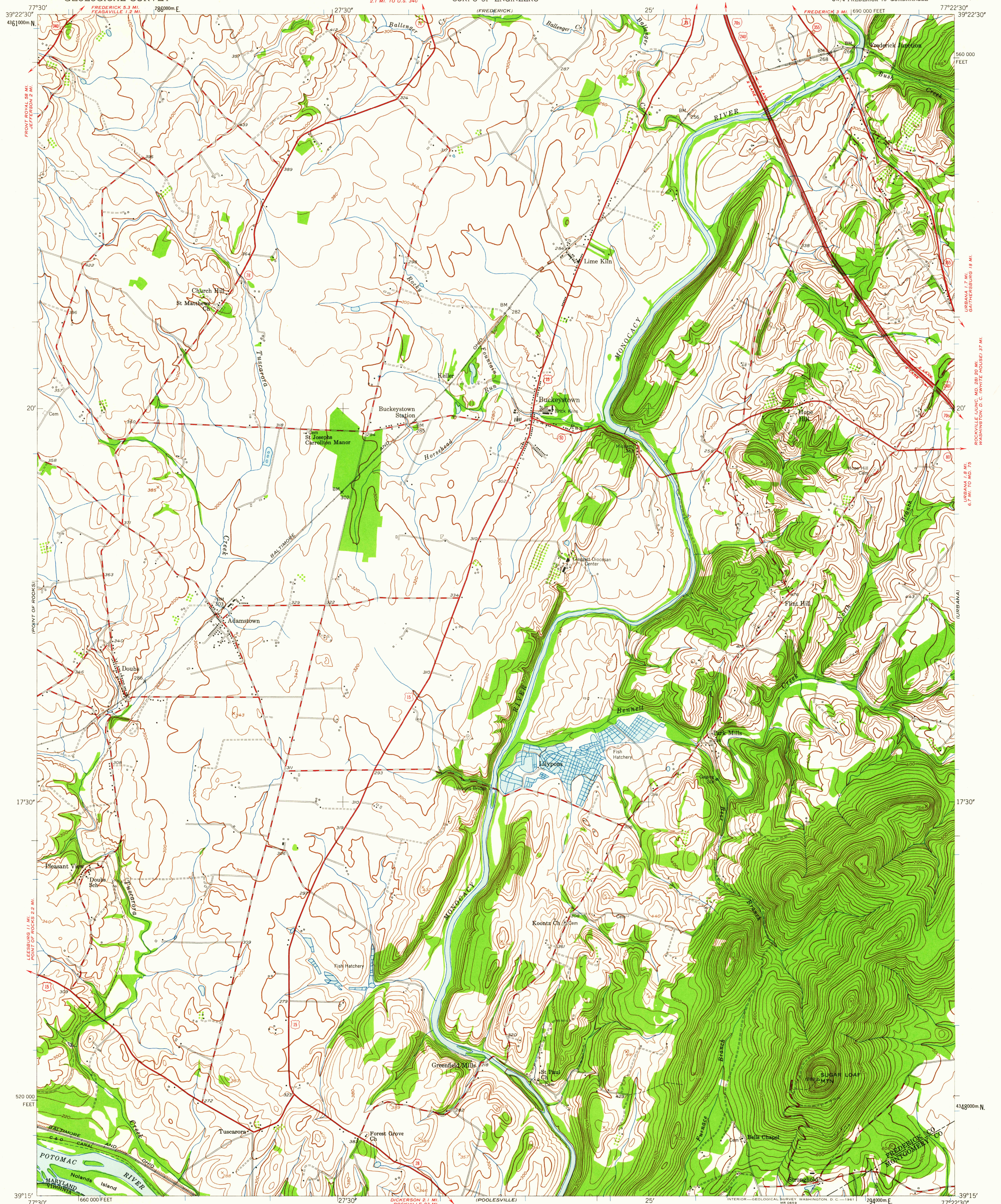


UNITED STATES  
DEPARTMENT OF THE INTERIOR  
GEOLOGICAL SURVEY

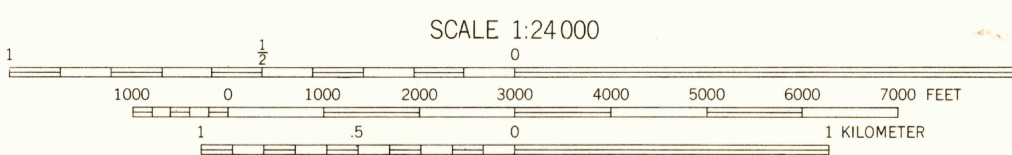
UNITED STATES  
DEPARTMENT OF THE ARMY  
CORPS OF ENGINEERS

BUCKEYSTOWN QUADRANGLE  
MARYLAND-VIRGINIA  
7.5 MINUTE SERIES (TOPOGRAPHIC)  
SW/4 FREDERICK 15' QUADRANGLE



Mapped by Corps of Engineers, U.S. Army  
Edited and published by the Geological Survey  
Control by USGS, USC&GS, and Maryland Geodetic Survey  
Topography from aerial photographs by KEK plotter  
Aerial photographs taken 1943  
Revised by the Geological Survey 1952  
Polyconic projection, 1927 North American datum  
10,000-foot grid based on Maryland coordinate system  
1000-meter Universal Transverse Mercator grid ticks,  
zone 18, shown in blue

TRUE NORTH  
MAGNETIC NORTH  
APPROXIMATE MEAN  
DECLINATION, 1952



CONTOUR INTERVAL 20 FEET  
DATUM IS MEAN SEA LEVEL

THIS MAP COMPLIES WITH NATIONAL MAP ACCURACY STANDARDS  
FOR SALE BY U.S. GEOLOGICAL SURVEY, WASHINGTON 25, D.C.  
A FOLDER DESCRIBING TOPOGRAPHIC MAPS AND SYMBOLS IS AVAILABLE ON REQUEST

ROAD CLASSIFICATION  
Heavy-duty ——— Light-duty ———  
Medium-duty ——— Unimproved dirt ———  
Interstate Route U.S. Route State Route  
QUADRANGLE LOCATION  
MARYLAND  
USGS  
Historical File  
Topographic Division  
BUCKEYSTOWN, MD.-VA.  
SW/4 FREDERICK 15' QUADRANGLE  
N3915-W7722.5/7.5  
1952

FILE COPY  
TOPOGRAPHIC DIVISION

FEB - 6 1952

3225