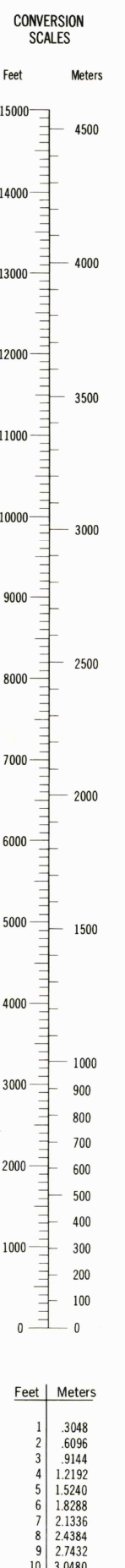
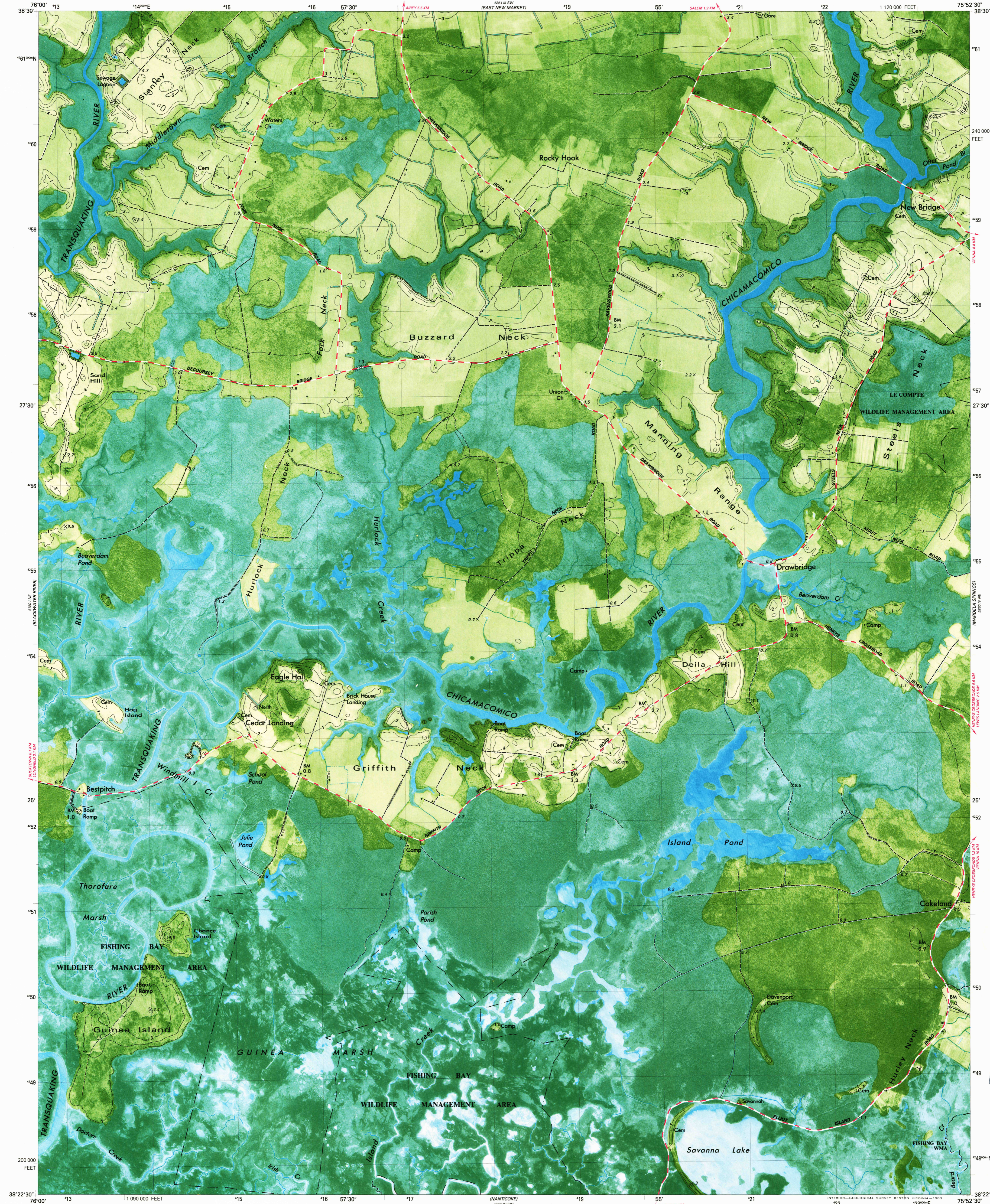


PREPARED BY
(CAMBRIDGE)

UNITED STATES
DEPARTMENT OF THE INTERIOR
GEOLOGICAL SURVEY

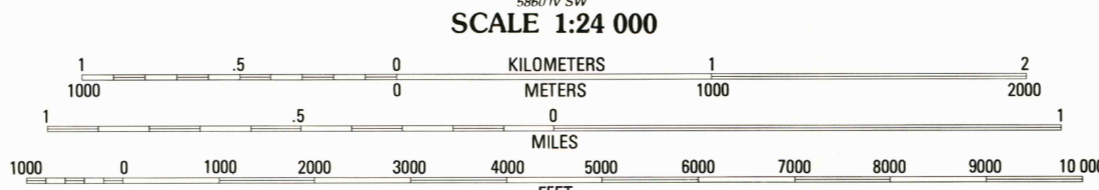
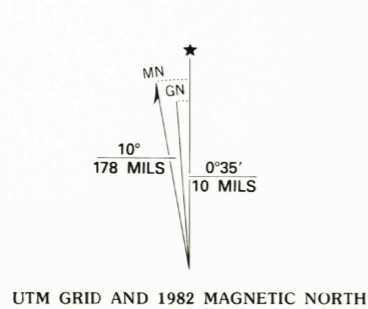
CHICAMACOMICO RIVER QUADRANGLE
MARYLAND - DORCHESTER CO.
7.5 MINUTE SERIES ORTHOPHOTOMAP (TOPOGRAPHIC)

NOT TO SCALE
(INCHES)



USGS NMN HISTORICAL MAP
REC'D FILE COPY

Produced by the United States Geological Survey
Control by USGS and NOS/NOAA
Orthophotomap prepared from aerial photograph taken March 25, 1977. Topography by planetable surveys 1978. Field checked 1978. Map edited 1982
Supersedes Army Map Service topographic map dated 1942
Projection and 1000-meter grid, zone 18: Universal Transverse Mercator
10,000-foot grid ticks based on Maryland coordinate system 1927 North American Datum
To place on the predicted North American Datum 1983 move the projection lines 8 meters south and 29 meters west as shown by dashed corner ticks
There may be private inholdings within the boundaries of the National or State reservations shown on this map



CONTOUR INTERVAL 1 METER
NATIONAL GEODETIC VERTICAL DATUM OF 1929
CONTROL AND OTHER ELEVATIONS SHOWN TO THE NEAREST 0.1 METER

THIS MAP COMPLIES WITH NATIONAL MAP ACCURACY STANDARDS
FOR SALE BY U. S. GEOLOGICAL SURVEY, RESTON, VIRGINIA 22092
A FOLDER DESCRIBING TOPOGRAPHIC MAPS AND SYMBOLS IS AVAILABLE ON REQUEST



CONTOURS AND ELEVATIONS
IN METERS

ROAD CLASSIFICATION

Primary highway, hard surface ——— Light-duty road, hard or improved surface ———

Secondary highway, hard surface - - - - - Unimproved road - - - - -

Trails - - - - -

Interstate Route U. S. Route State Route

CHICAMACOMICO RIVER, MD.
N3822.5 - W7552.57.5

1982

DMA 5860 IV NW - SERIES V8330