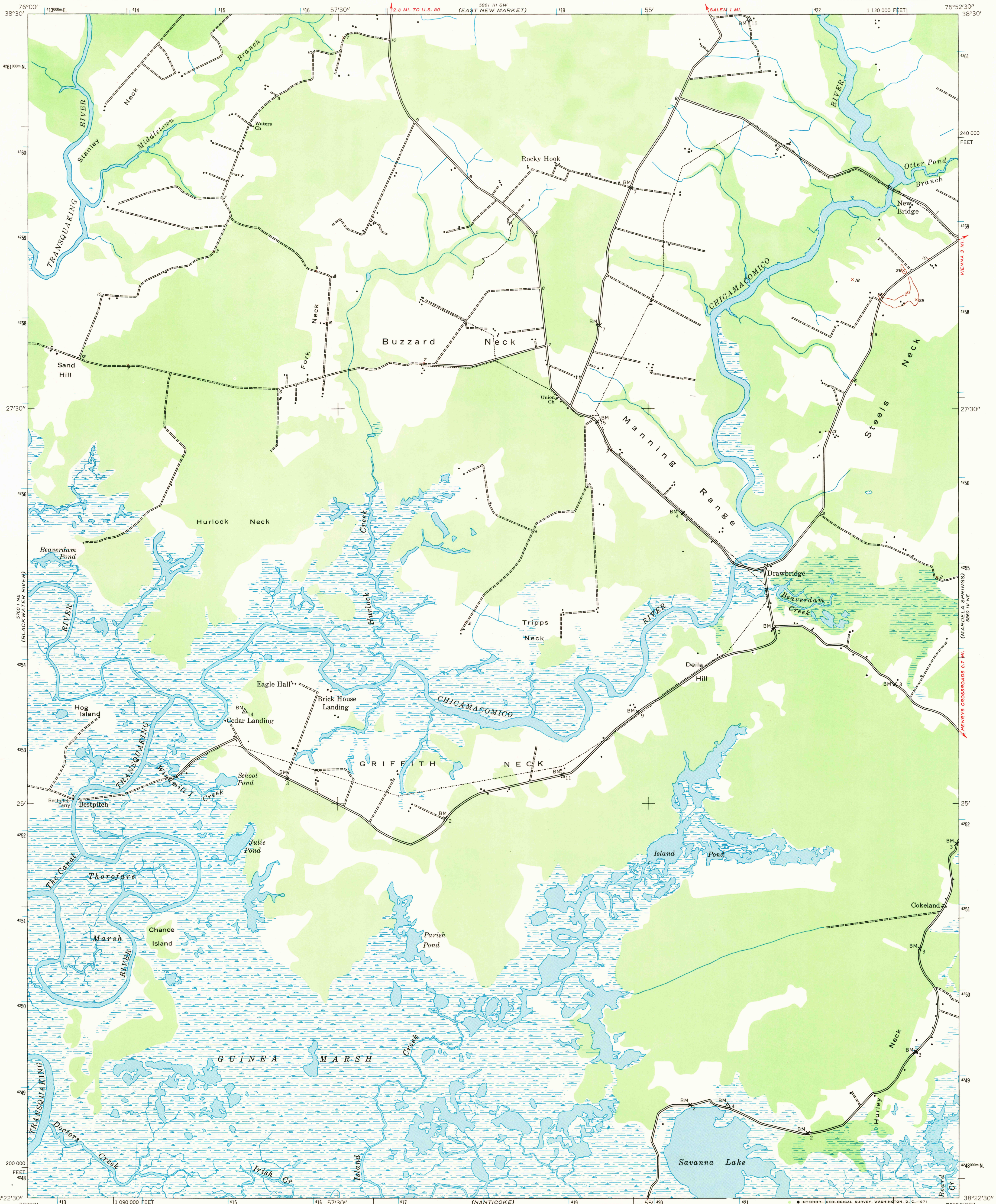
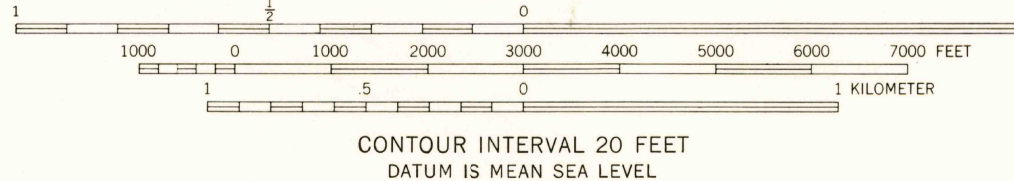
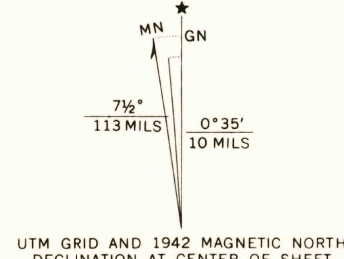


UNITED STATES
DEPARTMENT OF THE INTERIOR
GEOLOGICAL SURVEY

CHICAMACOMICO QUADRANGLE
MARYLAND-DORCHESTER CO.
7.5 MINUTE SERIES (TOPOGRAPHIC)
NW/4 NANTICOKE 15' QUADRANGLE



Mapped by the Army Map Service
Published for civil use by the Geological Survey
Control by USC&GS
Topography by photogrammetric methods from aerial
photographs taken 1942 and planetable surveys 1942
Polyconic projection. 1927 North American datum
10,000-foot grid based on Maryland coordinate system
1000-meter Universal Transverse Mercator grid ticks,
zone 18, shown in blue



SHORELINE SHOWN REPRESENTS THE APPROXIMATE LINE OF MEAN HIGH WATER
THE MEAN RANGE OF TIDE IS APPROXIMATELY 1 FOOT
THIS MAP COMPLIES WITH NATIONAL MAP ACCURACY STANDARDS
FOR SALE BY U. S. GEOLOGICAL SURVEY, WASHINGTON, D. C. 20242
A FOLDER DESCRIBING TOPOGRAPHIC MAPS AND SYMBOLS IS AVAILABLE ON REQUEST

USGS
Historical File
Topographic Division



ROAD CLASSIFICATION
Light-duty ————— Unimproved dirt - - - - -

CHICAMACOMICO, MD.
NW/4 NANTICOKE 15' QUADRANGLE
N3822.5-W7552.5/7.5

1942
AMS 5860 IV NW-SERIES V833

APR 15 1971
U.S.G.S.
FILE COPY
TOPOGRAPHIC DIVISION