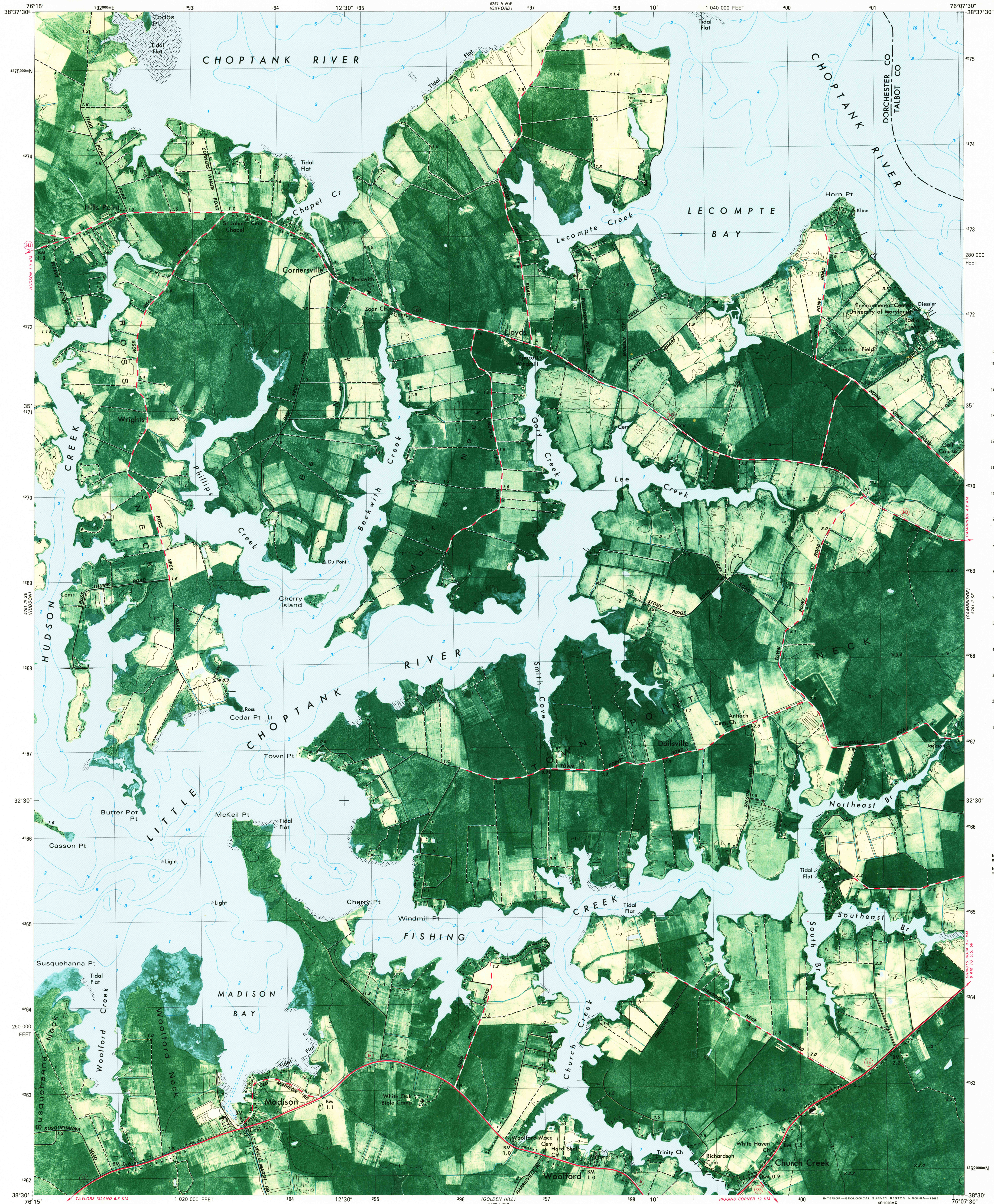


UNITED STATES  
DEPARTMENT OF THE INTERIOR  
GEOLOGICAL SURVEY

CHURCH CREEK QUADRANGLE  
MARYLAND  
7.5 MINUTE SERIES ORTHOPHOTOMAP (TOPOGRAPHIC)



CONVERSION  
SCALES

Feet Meters

15000 4500

14000 4000

13000 3500

12000 3000

11000 2500

10000 2000

9000 1500

8000 1000

7000 500

6000 0

5000 0

4000 0

3000 0

2000 0

1000 0

0 0

0 0

0 0

0 0

0 0

0 0

0 0

0 0

0 0

0 0

0 0

0 0

0 0

0 0

0 0

0 0

0 0

0 0

0 0

0 0

0 0

0 0

0 0

0 0

0 0

0 0

0 0

0 0

0 0

0 0

0 0

0 0

0 0

0 0

0 0

0 0

0 0

0 0

0 0

0 0

0 0

0 0

0 0

0 0

0 0

0 0

0 0

0 0

0 0

0 0

0 0

0 0

0 0

0 0

0 0

0 0

0 0

0 0

0 0

0 0

0 0

0 0

0 0

0 0

0 0

0 0

0 0

0 0

0 0

0 0

0 0

0 0

0 0

0 0

0 0

0 0

0 0

0 0

0 0

0 0

0 0

0 0

0 0

0 0

0 0

0 0

0 0

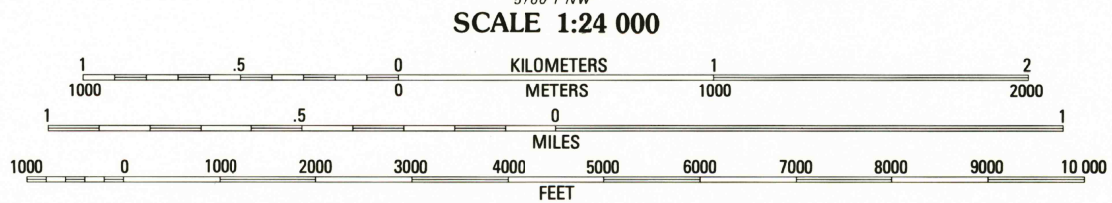
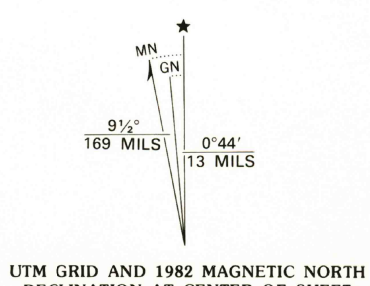
Produced by the United States Geological Survey  
Control by USGS and NOS/NOAA

Orthophotomaps prepared from aerial photograph taken  
April 29, 1978. Topography by photogrammetric methods  
from aerial photographs taken 1978 and planimetric  
surveys 1978. Field checked 1978. Map edited 1982  
Supersedes USGS topographic map dated 1942

Selected hydrographic data compiled from NOS chart 12266 (1980)  
This information is not intended for navigational purposes

Projection and 1000-meter grid, zone 18: Universal  
Transverse Mercator  
10,000-foot grid ticks based on Maryland coordinate  
system

1927 North American Datum  
To place on the predicted North American Datum 1983  
move the projection lines 8 meters south and  
29 meters west as shown by dashed corner ticks



CONTOUR INTERVAL 1 METER  
NATIONAL GEODETIC VERTICAL DATUM OF 1929  
CONTROL AND OTHER ELEVATIONS SHOWN TO THE NEAREST 0.1 METER  
DEPTH CURVES AND SOUNDINGS IN METERS—DATUM IS MEAN LOW WATER  
THE RELATIONSHIP BETWEEN THE TWO DATUMS IS VARIABLE  
THE MEAN RANGE OF TIDE IS APPROXIMATELY 0.4 METERS

THIS MAP COMPLIES WITH NATIONAL MAP ACCURACY STANDARDS  
FOR SALE BY U. S. GEOLOGICAL SURVEY, RESTON, VIRGINIA 22092  
A FOLDER DESCRIBING TOPOGRAPHIC MAPS AND SYMBOLS IS AVAILABLE ON REQUEST



CONTOURS AND ELEVATIONS  
IN METERS

ROAD CLASSIFICATION  
Primary highway, hard surface  
Secondary highway, hard surface  
Light-duty road, hard or improved surface  
Unimproved road  
Trails  
U. S. Route  
State Route



CHURCH CREEK, MD.  
N3830-W7607.5/7.5  
1982

DMA 5761 II SW-SERIES V8330

