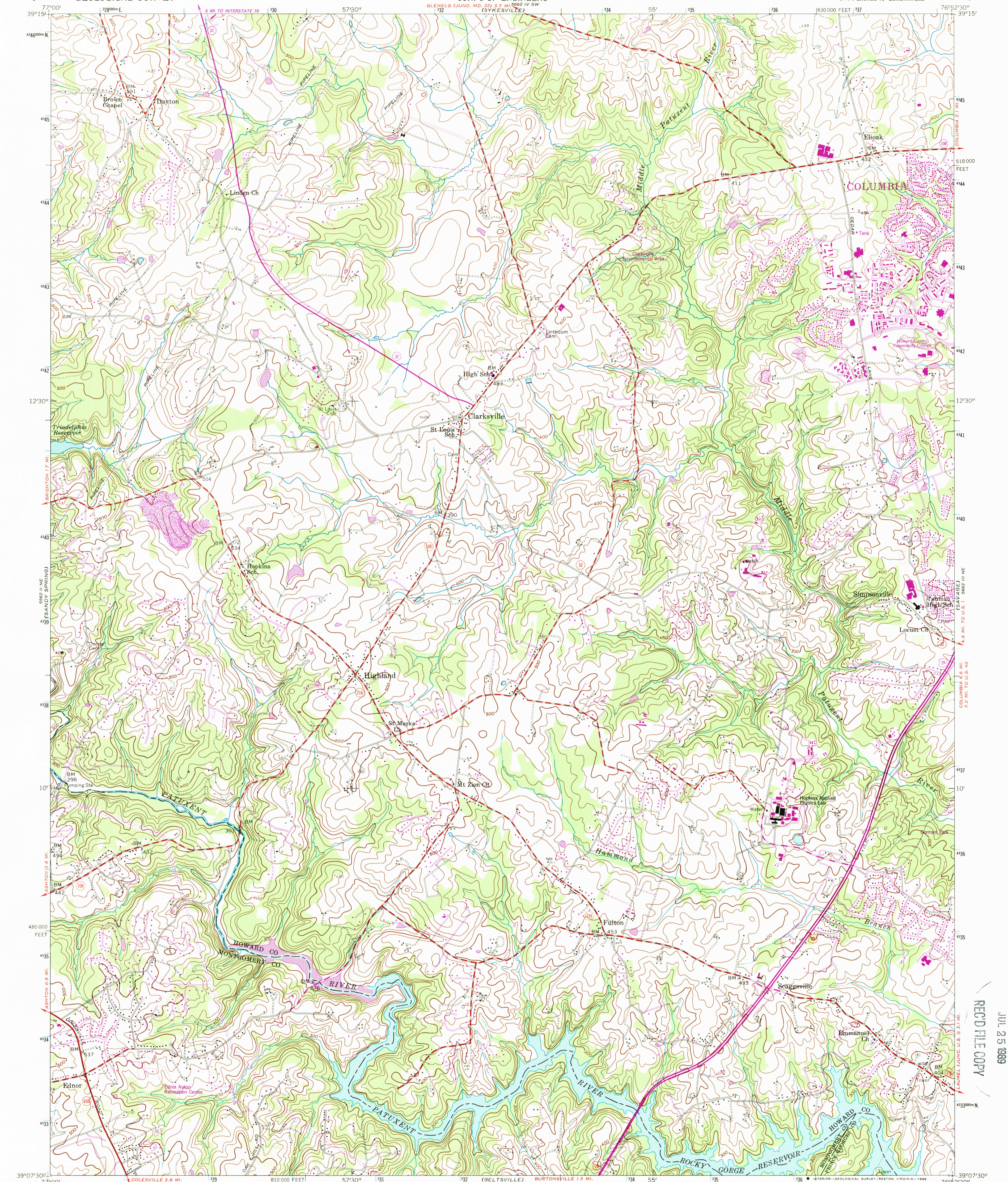


GLENELG (JUNC. MD. 32) 3.2 MI. S662 IV SW (SYKESVILLE)

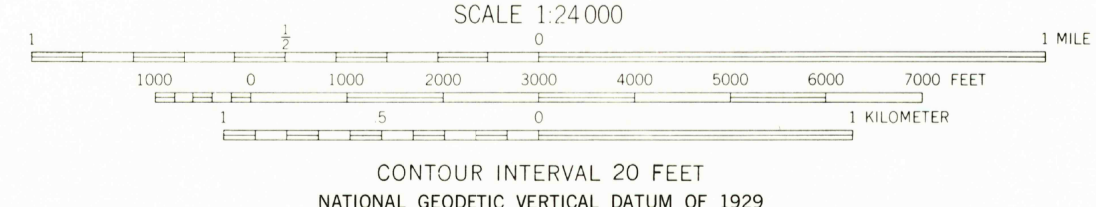
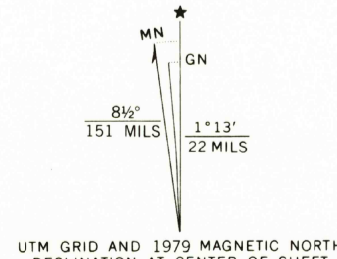


Maped by the Army Map Service
Published for civil use by the Geological Survey

Control by USGS, US&GS, USCE, and SCS
Topography from aerial photographs by photogrammetric methods
and by planetable surveys 1943. Planimetric detail revised
from aerial photographs taken 1955. Field check 1957
Polyconic projection. 1927 North American datum
10,000-foot grid based on Maryland coordinate system
1000-meter Universal Transverse Mercator grid ticks,
zone 18, shown in blue

Revisions shown in purple compiled by the Geological Survey
from aerial photographs taken 1977 and other source data
This information not field checked. Map edited 1979

Boundary lines shown in purple compiled from latest
information available from the controlling authority



THIS MAP COMPLIES WITH NATIONAL MAP ACCURACY STANDARDS
FOR SALE BY U.S. GEOLOGICAL SURVEY
DENVER, COLORADO 80225, OR RESTON, VIRGINIA 22092
A FOLDER DESCRIBING TOPOGRAPHIC MAPS AND SYMBOLS IS AVAILABLE ON REQUEST



To place on the predicted North American Datum 1983
move the projection lines 8 meters south and
26 meters west as shown by dashed corner ticks

ROAD CLASSIFICATION

Heavy-duty	Light-duty
Medium-duty	Unimproved dirt
U.S. Route	State Route

CLARKSVILLE, MD.
NW/4 LAUREL 15' QUADRANGLE
39076-B8-1F-024

1957
PHOTOREVISED 1979
DMA 5662 III NW-SERIES V833

REC'D FILE COPY

JUL 25 1989

USGS NMD HISTORICAL MAP

(LAUREL 15')