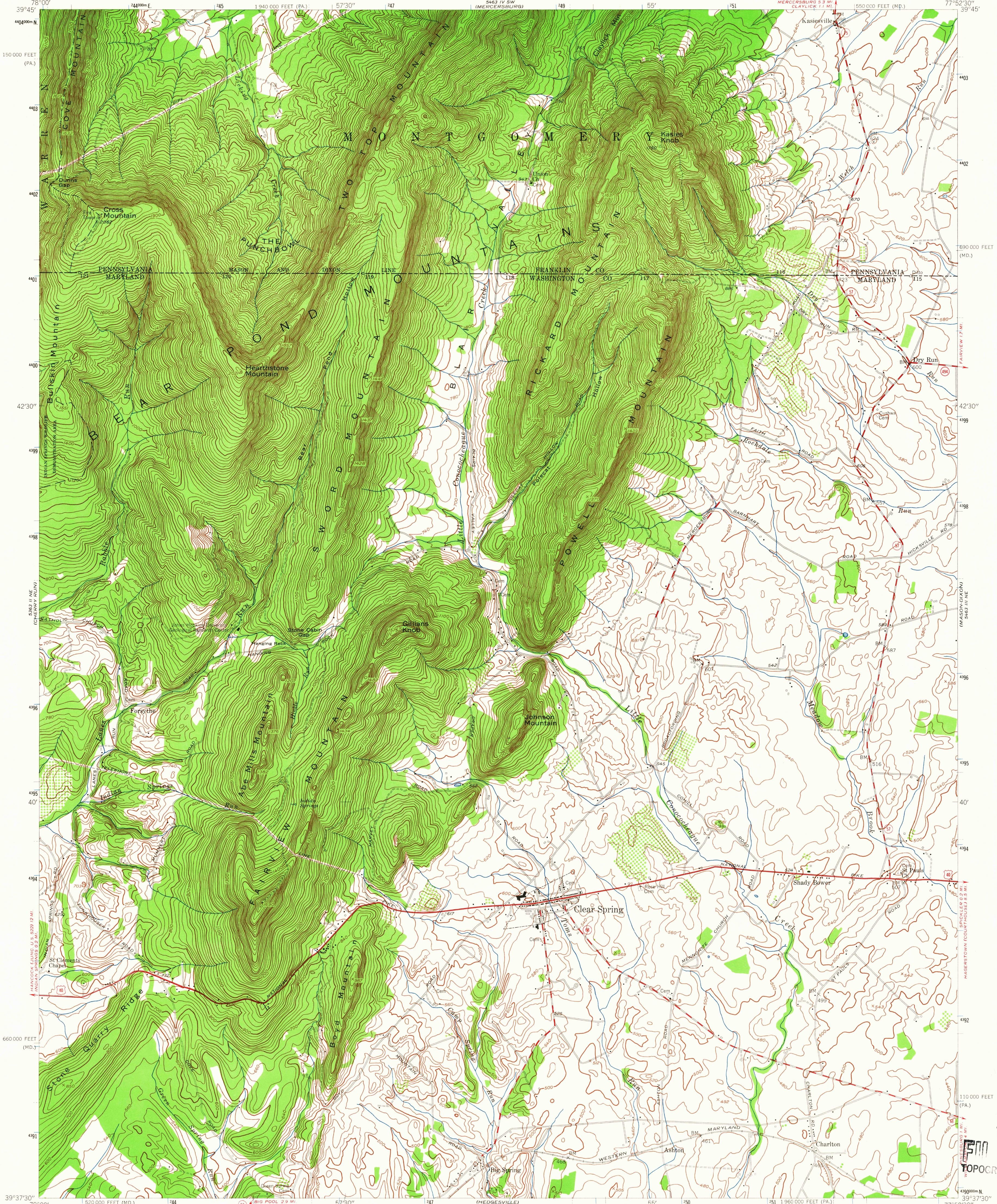


UNITED STATES
DEPARTMENT OF THE INTERIOR
GEOLOGICAL SURVEY

UNITED STATES
DEPARTMENT OF THE ARMY
CORPS OF ENGINEERS

CLEAR SPRING QUADRANGLE
MARYLAND—PENNSYLVANIA
7.5 MINUTE SERIES (TOPOGRAPHIC)
NW/4 WILLIAMSPORT 15' QUADRANGLE



Mapped by the Army Map Service
Edited and published by the Geological Survey

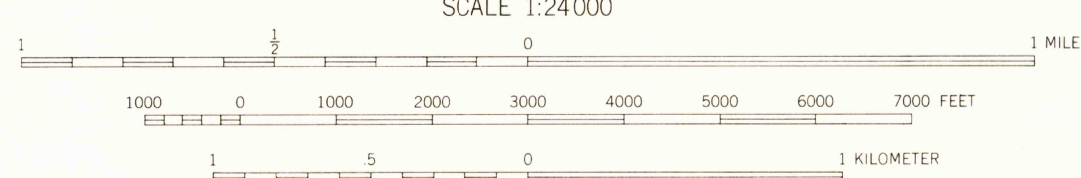
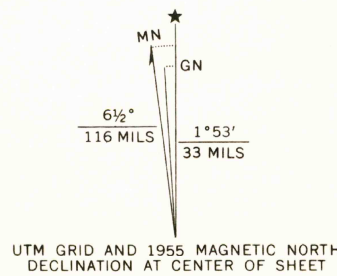
Control by USGS and USC&GS

Topography from aerial photographs by photogrammetric methods
Aerial photographs taken 1943. Field check 1944
Culture revised by the Geological Survey 1955

Polycyclic projection. 1927 North American datum
10,000-foot grids based on Maryland coordinate system,
and Pennsylvania coordinate system, south zone

Unchecked elevations are shown in brown

1000-meter Universal Transverse Mercator grid ticks,
zone 18, shown in blue



CONTOUR INTERVAL 20 FEET
DATUM IS MEAN SEA LEVEL

THIS MAP COMPLIES WITH NATIONAL MAP ACCURACY STANDARDS
FOR SALE BY U.S. GEOLOGICAL SURVEY, WASHINGTON, D. C. 20242
A FOLDER DESCRIBING TOPOGRAPHIC MAPS AND SYMBOLS IS AVAILABLE ON REQUEST

USGS
Historical File
Topographic Division



ROAD CLASSIFICATION
Heavy-duty ——— Light-duty ———
Med-um-duty ——— Unimproved dirt ———
U. S. Route ——— State Route ———

CLEAR SPRING, MD.—PA.
NW/4 WILLIAMSPORT 15' QUADRANGLE
N 3937.5—W 7752.5/7.5

1955

AMS 5463 III NW—SERIES V833

U.S.G.S.
TOPOGRAPHIC DIVISION

3190

JUN 21 1955