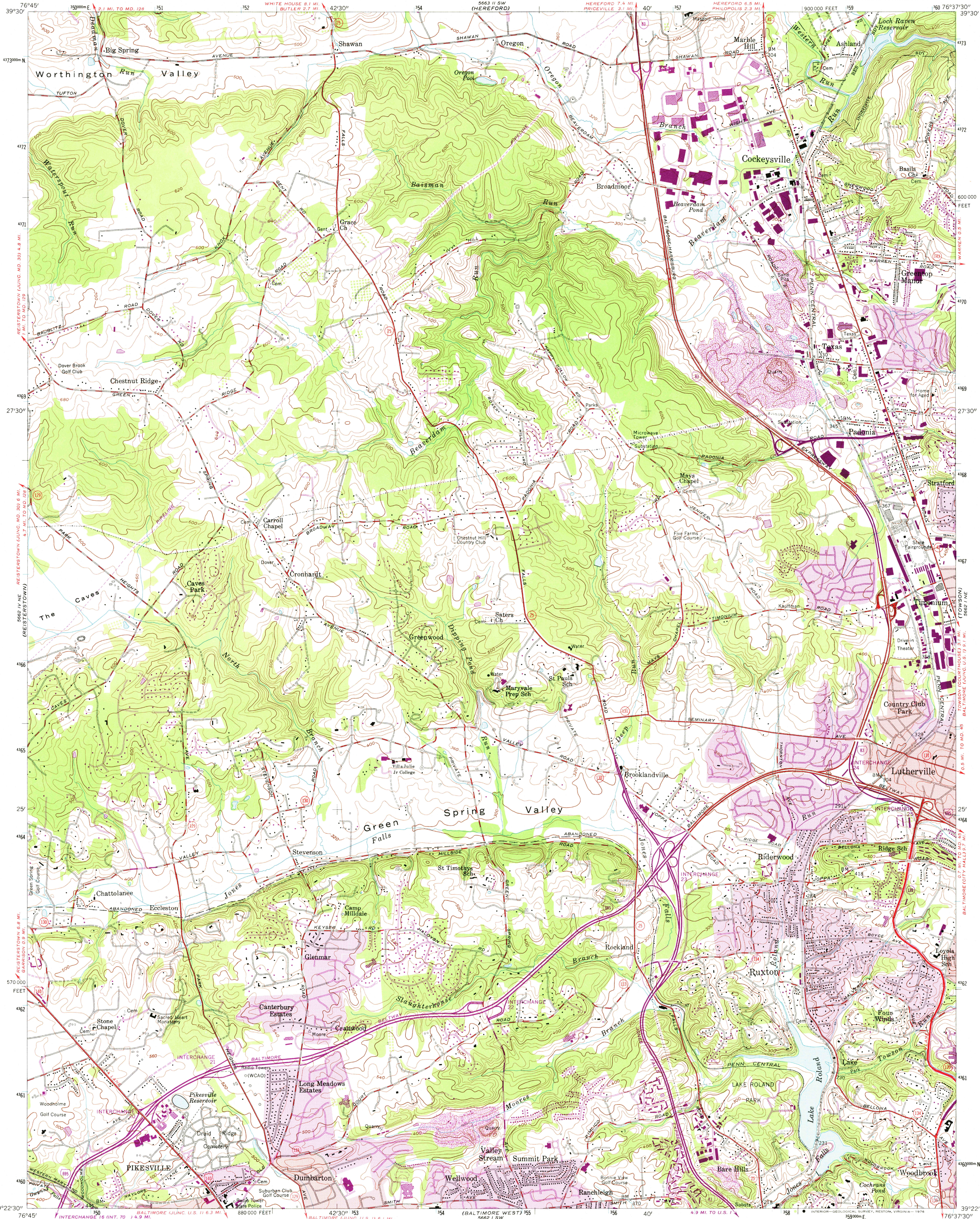
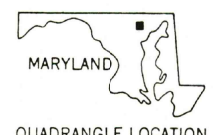
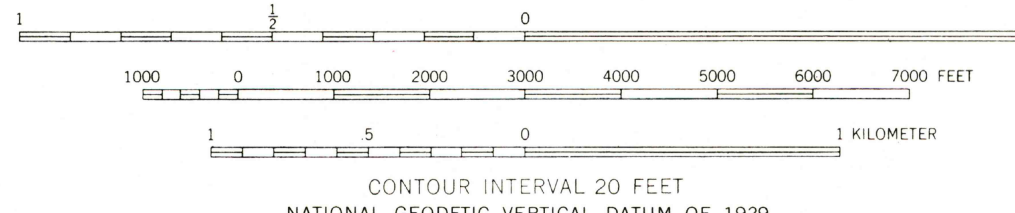
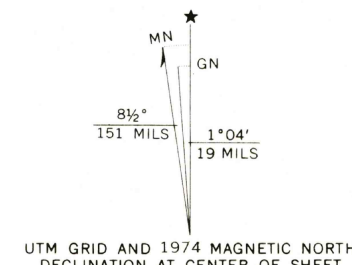


UNITED STATES  
DEPARTMENT OF THE INTERIOR  
GEOLOGICAL SURVEY

COCKEYSVILLE QUADRANGLE  
MARYLAND-BALTIMORE CO.  
7.5 MINUTE SERIES (TOPOGRAPHIC)  
NW 1/4 BALTIMORE 15' QUADRANGLE



Map by the Army Map Service  
Edited and published by the Geological Survey  
Control by USGS and USC&GS  
Topography from aerial photographs by photogrammetric methods. Aerial photographs taken 1943. Field check 1944  
Culture revised by the Geological Survey 1957  
Polyconic projection. 1927 North American datum  
10,000-foot grid based on Maryland coordinate system  
1000-meter Universal Transverse Mercator grid ticks, zone 18, shown in blue  
Red tint indicates areas in which only landmark buildings are shown



ROAD CLASSIFICATION  
Heavy-duty ——— Light-duty ———  
Medium-duty ——— Unimproved dirt ———  
Interstate Route U.S. Route State Route  
USGS HISTORICAL FILE TOPOGRAPHIC DIVISION  
COCKEYSVILLE, MD.  
NW 1/4 BALTIMORE 15' QUADRANGLE  
N 3922.5-W 7637.5/7.5  
1957  
PHOTOREVISED 1966 AND 1974  
AMS 5662 1 NW-SERIES V833

THIS MAP COMPLIES WITH NATIONAL MAP ACCURACY STANDARDS  
FOR SALE BY U.S. GEOLOGICAL SURVEY, RESTON, VIRGINIA 22092  
A FOLDER DESCRIBING TOPOGRAPHIC MAPS AND SYMBOLS IS AVAILABLE ON REQUEST

Revisions shown in purple compiled by the Geological Survey from aerial photographs taken 1966 and 1974. This information not field checked.  
Purple tint indicates extension of urban areas.

JAN 29 1976