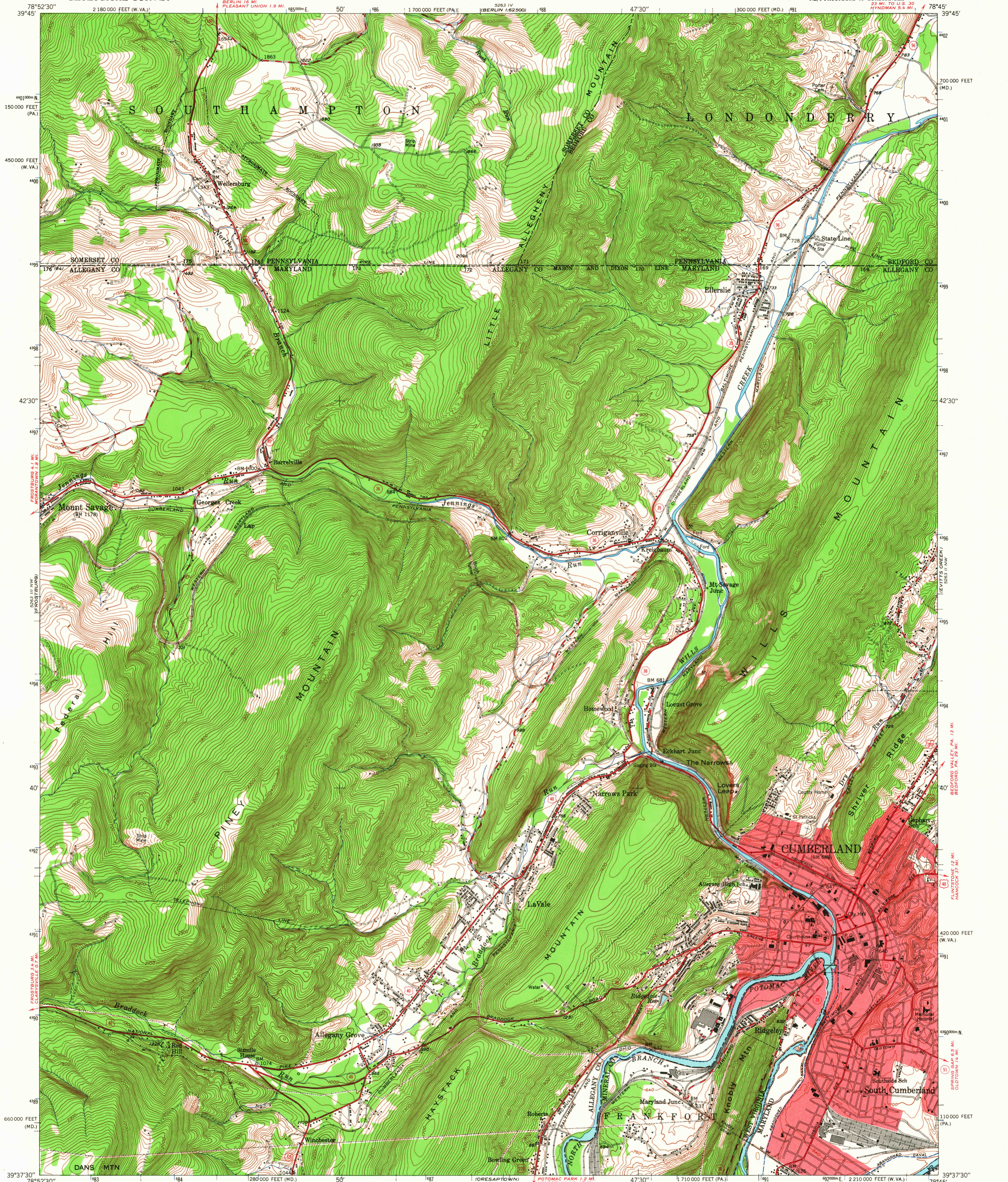


UNITED STATES
DEPARTMENT OF THE INTERIOR
GEOLOGICAL SURVEY

CUMBERLAND QUADRANGLE
MARYLAND-PENNSYLVANIA-WEST VIRGINIA
7.5 MINUTE SERIES (TOPOGRAPHIC)
NE/4 FROSTBURG 15' QUADRANGLE
21 MI. TO U.S. 30
HYNDMAN 5.5 MI.



Mapped, edited, and published by the Geological Survey

Control by USGS and USC&GS

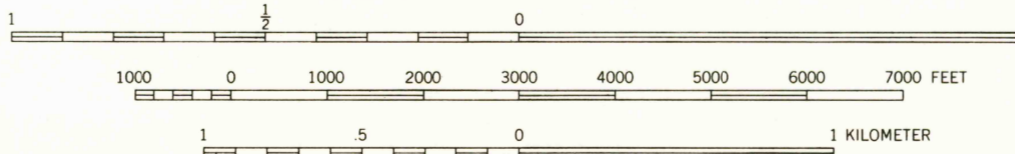
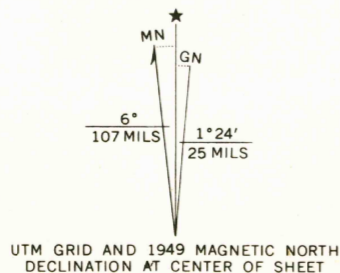
Topography from aerial photographs by multiplex methods
Aerial photographs taken 1947. Field check 1949

Polyconic projection. 1927 North American datum
10,000-foot grids based on Maryland coordinate system,
Pennsylvania coordinate system, south zone, and
West Virginia coordinate system, north zone

Red tint indicates area in which only
landmark buildings are shown

Contours in strip mine areas compiled from 1947 photography
Broken contours indicate strip mining
subsequent to photography

1000-meter Universal Transverse Mercator grid ticks,
zone 17, shown in blue



CONTOUR INTERVAL 20 FEET
DATUM IS MEAN SEA LEVEL

THIS MAP COMPLIES WITH NATIONAL MAP ACCURACY STANDARDS
FOR SALE BY U.S. GEOLOGICAL SURVEY, WASHINGTON, D.C. 20242
A FOLDER DESCRIBING TOPOGRAPHIC MAPS AND SYMBOLS IS AVAILABLE ON REQUEST
THIS MAP IS AVAILABLE WITH OR WITHOUT SHADED RELIEF OVERPRINT

USGS
Historical File
Topographic Division

U.S.G.S.
FIND COPY
TOPOGRAPHIC DIVISION

ROAD CLASSIFICATION
Heavy-duty ——— Light-duty ———
Medium-duty ——— Unimproved dirt ———
U.S. Route ——— State Route ———

CUMBERLAND, MD.-PA.-W.VA.

NE/4 FROSTBURG 15' QUADRANGLE
N3937.5-W7845.7.5

1949

AMS 5263 III NE—SERIES V833

11605