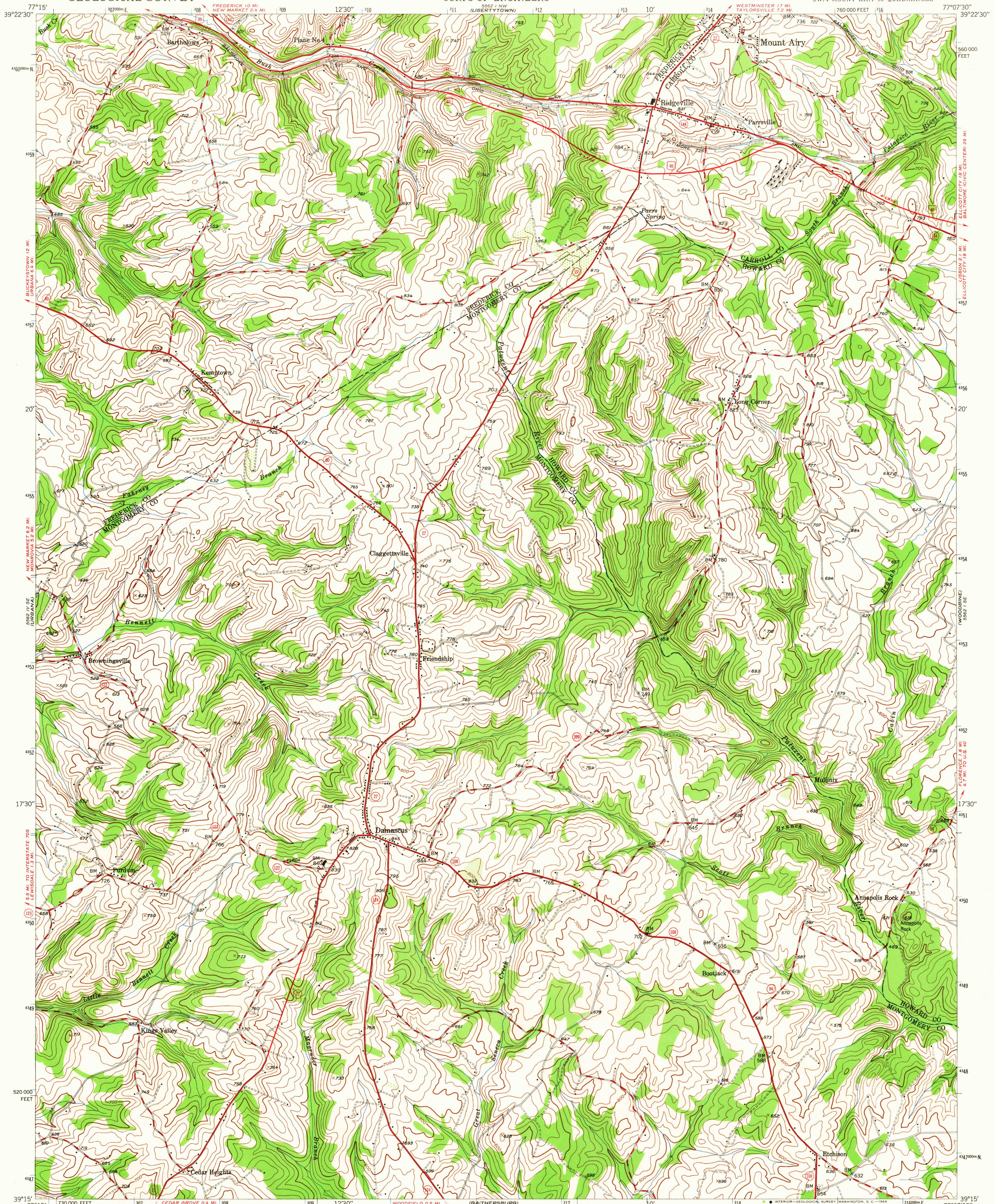


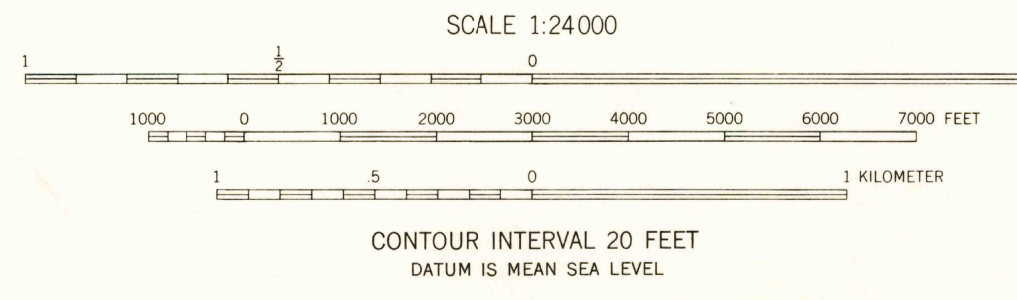
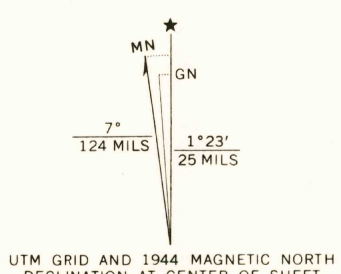
UNITED STATES
DEPARTMENT OF THE INTERIOR
GEOLOGICAL SURVEY

UNITED STATES
DEPARTMENT OF THE ARMY
CORPS OF ENGINEERS

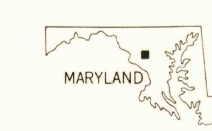
DAMASCUS QUADRANGLE
MARYLAND
7.5 MINUTE SERIES (TOPOGRAPHIC)
SW/4 MOUNT AIRY 15' QUADRANGLE



Maped by the U.S. Forest Service
Edited and published by the Geological Survey
Control by USC&GS, WSSD, USSCS, and USFS
Topography from aerial photographs by K&K plotter 1944
Aerial photographs taken 1943 Field check, 1944
Polyconic projection, 1927 North American datum
10,000-foot grid based on Maryland coordinate system
1000-meter Universal Transverse Mercator grid ticks,
zone 18, shown in blue



USGS
Historical File
Topographic Division



U.S.G.S.

FILE COPY
TOPOGRAPHIC DIVISION

ROAD CLASSIFICATION
Heavy-duty ——— Light-duty ———
Medium-duty ——— Unimproved dirt ———
U.S. Route ——— State Route ———

DAMASCUS, MD.
SW/4 MOUNT AIRY 15' QUADRANGLE
N3915-W7707.5/7.5

1944
AMS 5562 I SW-SERIES V833

THIS MAP COMPLIES WITH NATIONAL MAP ACCURACY STANDARDS
FOR SALE BY U.S. GEOLOGICAL SURVEY, WASHINGTON, D.C. 20242
A FOLDER DESCRIBING TOPOGRAPHIC MAPS AND SYMBOLS IS AVAILABLE ON REQUEST

5205
MAR 13 1966