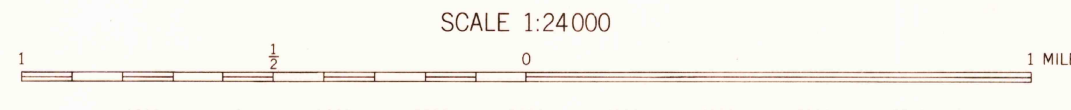


Prepared under the direction of the Chief of Engineers by the Army Map Service (AM), U. S. Army, Washington, D. C. Copied in 1946 from Maryland, 1:31,680, AMS, Sheet 5860 1 NE, 1942. Original map compiled by USC&GS; planimetry from aerial photography by photoplanimetric methods; topography by planimetric methods. Horizontal and vertical control by USC&GS. Map field checked, 1942. Scale changed and marginal data revised, 1946. This map complies with the national standard map accuracy requirements.

LEGEND
ROAD DATA 1942

Hard surface, heavy duty road, more than two lanes wide	Loose surface, graded, dry-weather road
Hard surface, heavy duty road, two lanes wide, Federal route marker	Trail; dirt road
Secondary, hard surface, all-weather road, two lanes wide, State route marker	Railroad in street; Carline in street
RAILROADS	UNDER CONSTRUCTION
Standard gauge	Single track
Narrow gauge	Double track
Single track carline	ABANDONED
	Single track
	Double track

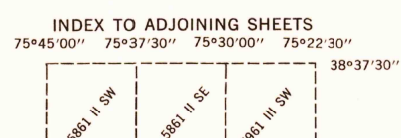
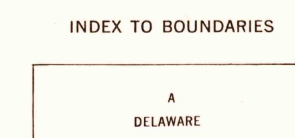


CONTOUR INTERVAL 20 FEET
DATUM IS MEAN SEA LEVEL

POLYCONIC PROJECTION
1927 NORTH AMERICAN DATUM

REPRINTED FROM MILITARY EDITION FOR CIVIL USE
FOR SALE BY U. S. GEOLOGICAL SURVEY, WASHINGTON, D. C. 20242
A FOLDER DESCRIBING TOPOGRAPHIC MAPS AND SYMBOLS IS AVAILABLE ON REQUEST

75°
TRUE NORTH
MAGNETIC NORTH
APPROXIMATE MEAN DECLINATION, 1946



Delaware
A. Sussex County
1. District No. 5
Maryland
B. Wicomico County
2. Delmar No. 11 District
3. Parsons No. 5 District
4. Salisbury No. 9 District

Sheet 5860 1 NE falls within NJ 18.5, AMS 5501, 1:250,000