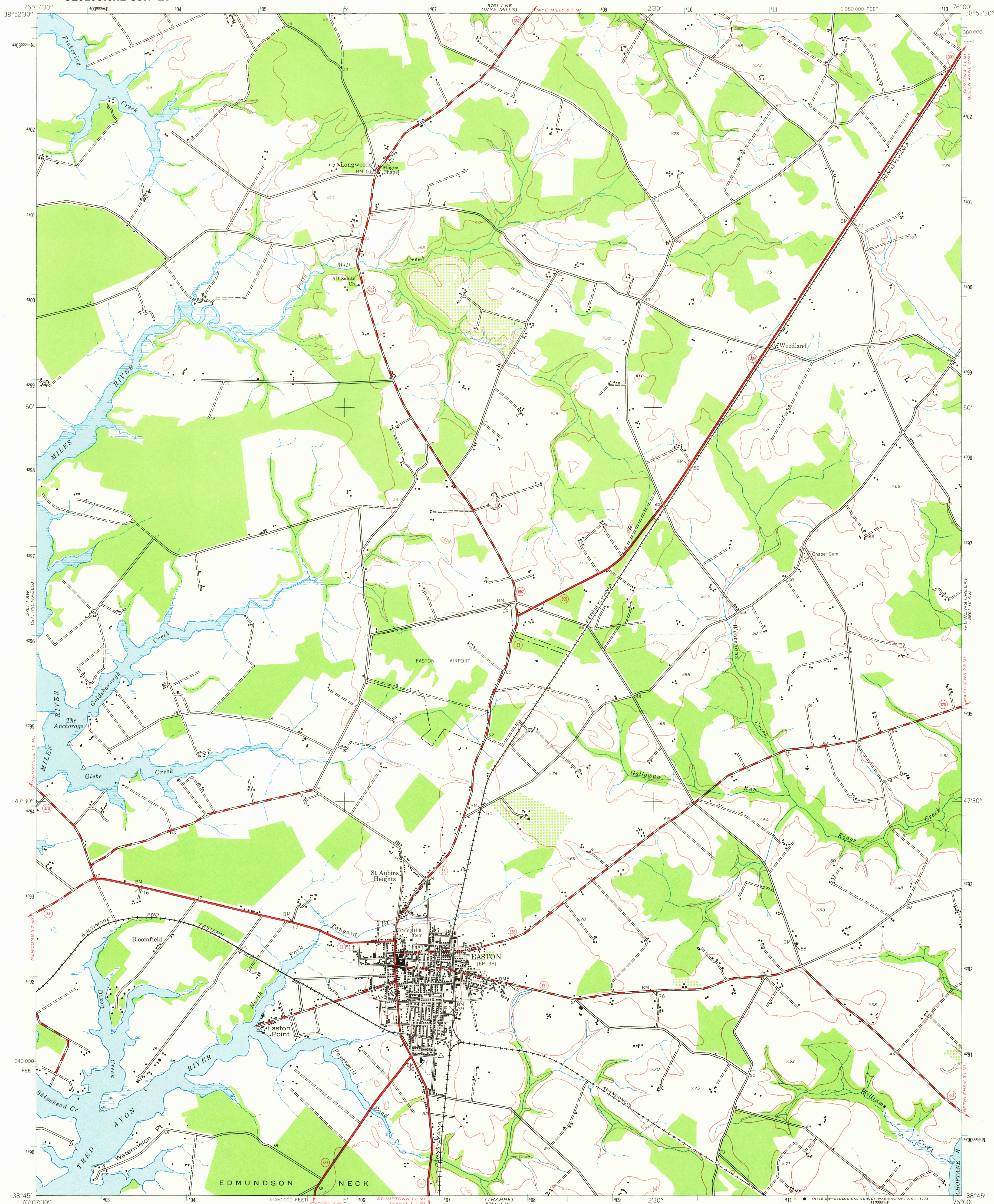


UNITED STATES  
DEPARTMENT OF THE INTERIOR  
GEOLOGICAL SURVEY

EASTON QUADRANGLE  
MARYLAND-TALBOT CO.  
7.5 MINUTE SERIES (TOPOGRAPHIC)  
SE 1/4 ST. MICHAELS 15' QUADRANGLE



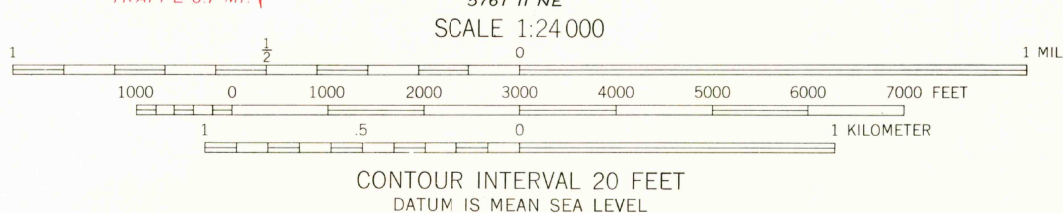
Map by the Army Map Service  
Published for civil use by the Geological Survey

Control by USC&GS

Topography from aerial photographs by photogrammetric methods  
and by planetable surveys 1942. Aerial photographs taken 1942

Polyconic projection. 1927 North American datum  
10,000-foot grid based on Maryland coordinate system  
1000-meter Universal Transverse Mercator grid ticks,  
zone 18, shown in blue

UTM GRID AND 1942 MAGNETIC NORTH  
DECLINATION AT CENTER OF SHEET



THIS MAP COMPLIES WITH NATIONAL MAP ACCURACY STANDARDS  
FOR SALE BY U. S. GEOLOGICAL SURVEY, WASHINGTON, D. C. 20242  
A FOLDER DESCRIBING TOPOGRAPHIC MAPS AND SYMBOLS IS AVAILABLE ON REQUEST



ROAD CLASSIFICATION  
Heavy-duty ——— Light-duty ———  
Medium-duty ——— Unimproved dirt ———  
State Route ———

USGS  
HISTORICAL FILE  
TOPOGRAPHIC DIVISION

EASTON, MD.  
SE 1/4 ST. MICHAELS 15' QUADRANGLE  
N3845-W7600/7.5  
1942

AMS 5761 I SE-SERIES V833

DMA  
2000

MAR 9 1973