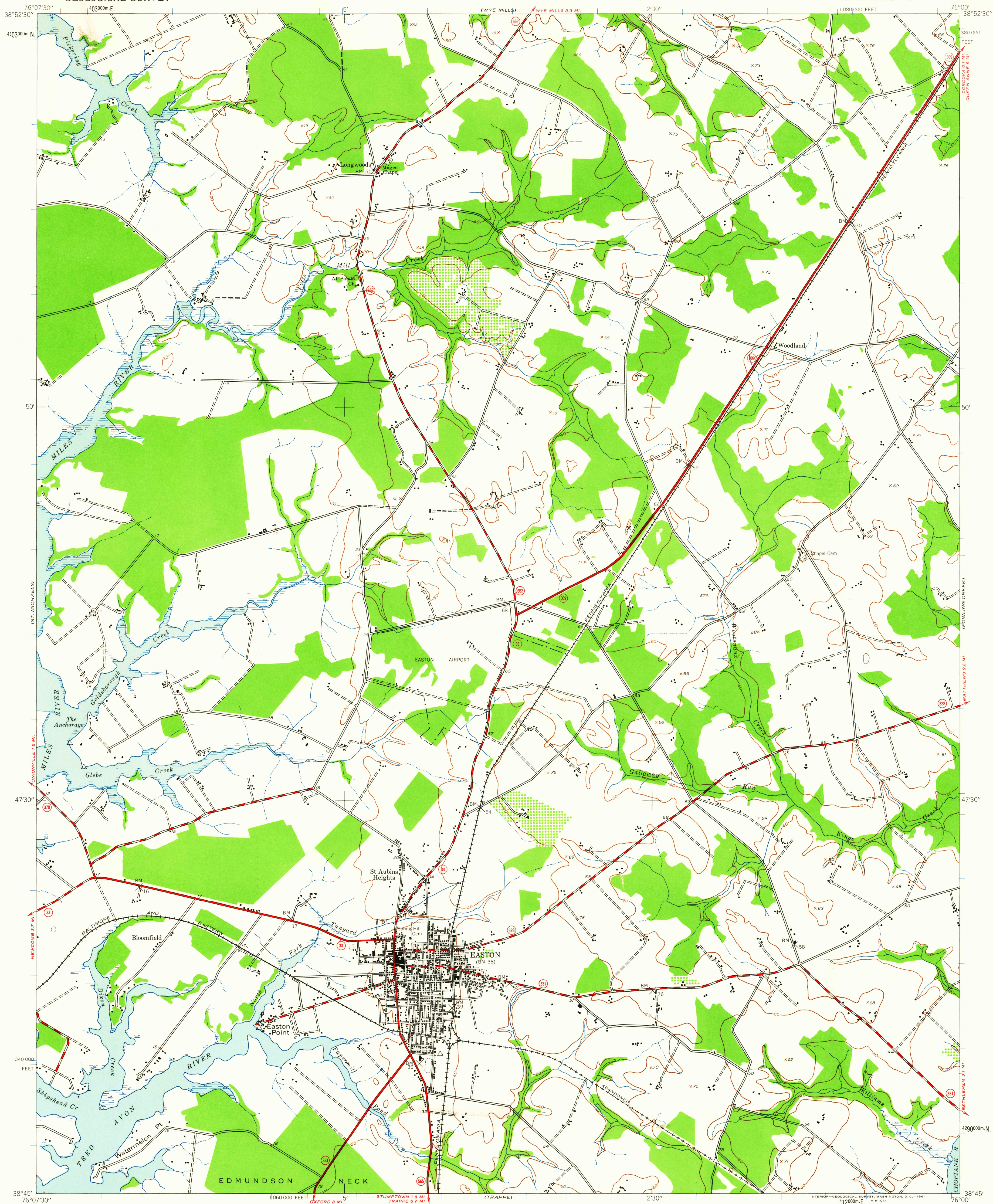


UNITED STATES  
DEPARTMENT OF THE INTERIOR  
GEOLOGICAL SURVEY

EASTON QUADRANGLE  
MARYLAND—TALBOT CO.  
7.5 MINUTE SERIES (TOPOGRAPHIC)  
SE 1/4 ST. MICHAELS 15' QUADRANGLE



Map by the Army Map Service  
Published for civil use by the Geological Survey

Control by USC&GS

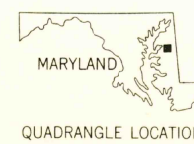
Topography from aerial photographs by photogrammetric methods  
and by planetable surveys 1942. Aerial photographs taken 1942

Polyconic projection. 1927 North American datum  
10,000-foot grid based on Maryland coordinate system  
1000-meter Universal Transverse Mercator grid ticks,  
zone 18, shown in blue

TRUE NORTH  
MAGNETIC NORTH  
APPROXIMATE MEAN  
DECLINATION, 1942

SCALE 1:24,000  
1 000 2000 3000 4000 5000 6000 7000 FEET  
1 MILE  
1 2 3 4 5 6 7 8 9 10 KILOMETER  
CONTOUR INTERVAL 20 FEET  
DATUM IS MEAN SEA LEVEL

THIS MAP COMPLIES WITH NATIONAL MAP ACCURACY STANDARDS  
FOR SALE BY U. S. GEOLOGICAL SURVEY, WASHINGTON 25, D. C.  
A FOLDER DESCRIBING TOPOGRAPHIC MAPS AND SYMBOLS IS AVAILABLE ON REQUEST



ROAD CLASSIFICATION  
Heavy-duty ——— Light-duty ———  
Medium-duty ——— Unimproved dirt ———  
State Route ———  
USGS  
Historical File  
Topographic Division  
EASTON, MD.  
SE 1/4 ST. MICHAELS 15' QUADRANGLE  
N3845—W7600/7.5  
1942

JAN 26 1962

2116