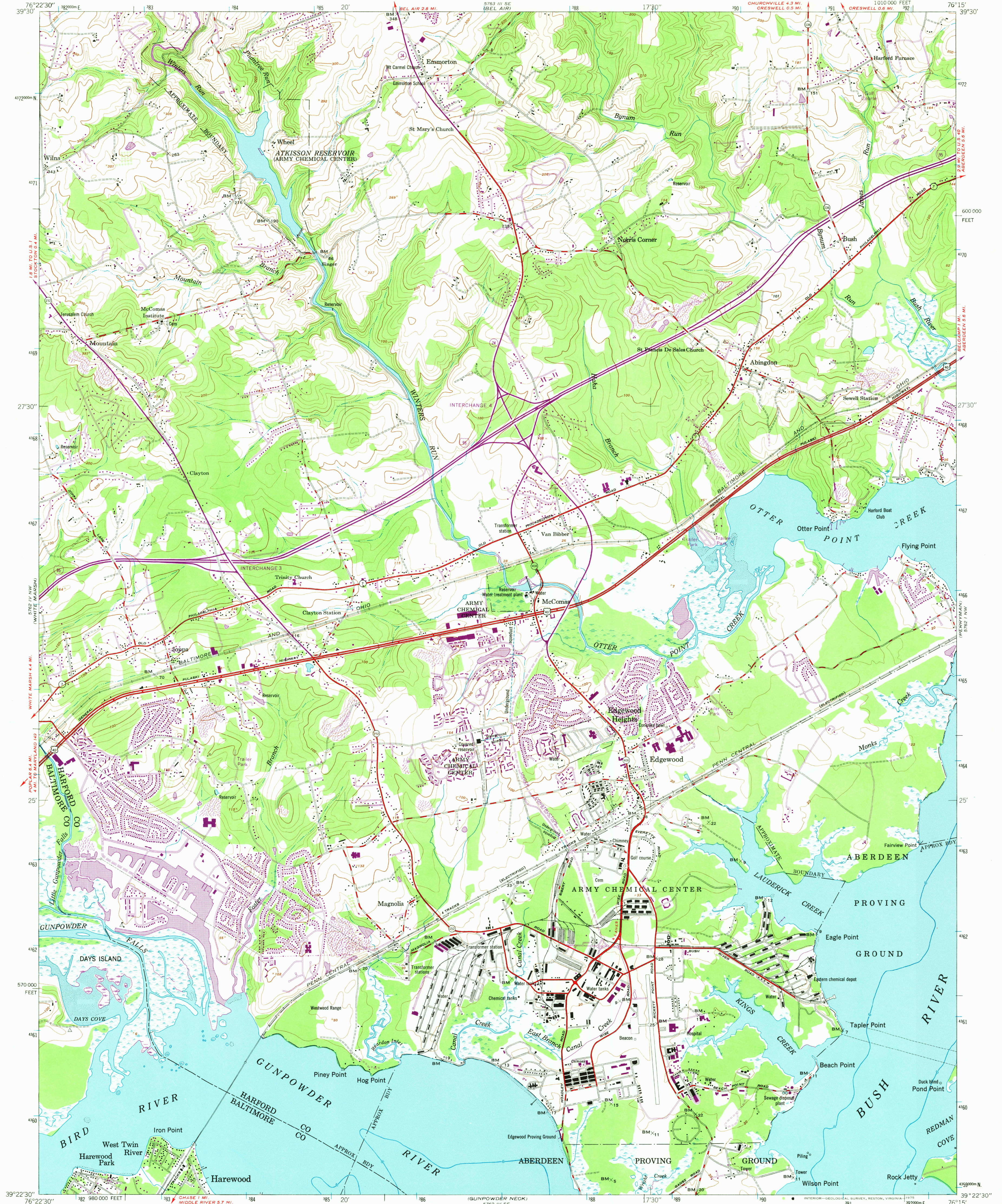


UNITED STATES
DEPARTMENT OF THE INTERIOR
GEOLOGICAL SURVEY

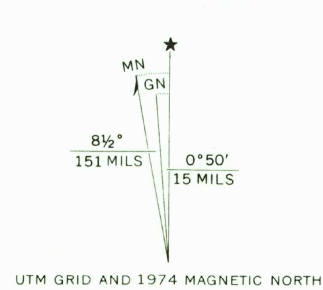
UNITED STATES
DEPARTMENT OF THE ARMY
CORPS OF ENGINEERS

EDGEWOOD QUADRANGLE
MARYLAND
7.5 MINUTE SERIES (TOPOGRAPHIC)
NE/4 GUNPOWDER 15 QUADRANGLE
1010 000 FEET



Mapped by the Army Map Service
Hydrography from USC&GS surveys
Published for civil use by the Geological Survey
Control by USC&GS, CE, and USGS

Topography from aerial photographs by multiplex methods
Aerial photographs taken 1947, Field check 1949
Polyconic projection, 1927 North American datum
10,000-foot grid based on Maryland coordinate system
1000-meter Universal Transverse Mercator grid ticks,
zone 18, shown in blue
No distinction is made between dwellings, barns,
commercial and industrial buildings



CONTOUR INTERVAL 20 FEET
NATIONAL GEODETIC VERTICAL DATUM OF 1929
DEPTH CURVES IN FEET DATUM IS MEAN LOW WATER
SHORELINE SHOWN REPRESENTS THE APPROXIMATE LINE OF MEAN HIGH WATER
THE AVERAGE RANGE OF TIDE IS APPROXIMATELY 2 FEET



ROAD CLASSIFICATION
HARD SURFACE ALL WEATHER ROADS DRY WEATHER ROADS
Heavy-duty 4 LANE 10 LANE Improved dirt
Medium-duty 4 LANE 10 LANE Unimproved dirt
Loose-surface, graded, or narrow hard-surface
U. S. Route State Route
Interstate Route
EDGWOOD, MD.
NE/4 GUNPOWDER 15 QUADRANGLE
N3922.5-W7615/7.5
EDITION OF 1949
PHOTOREVISED 1970 AND 1974
AMS 5762 IV NE-SERIES V833

Revisions shown in purple compiled by the Geological Survey from
aerial photographs taken 1970 and 1974.

FOR SALE BY U.S. GEOLOGICAL SURVEY, RESTON, VIRGINIA 22092
A FOLDER DESCRIBING TOPOGRAPHIC MAPS AND SYMBOLS IS AVAILABLE ON REQUEST

OCT 17 1975