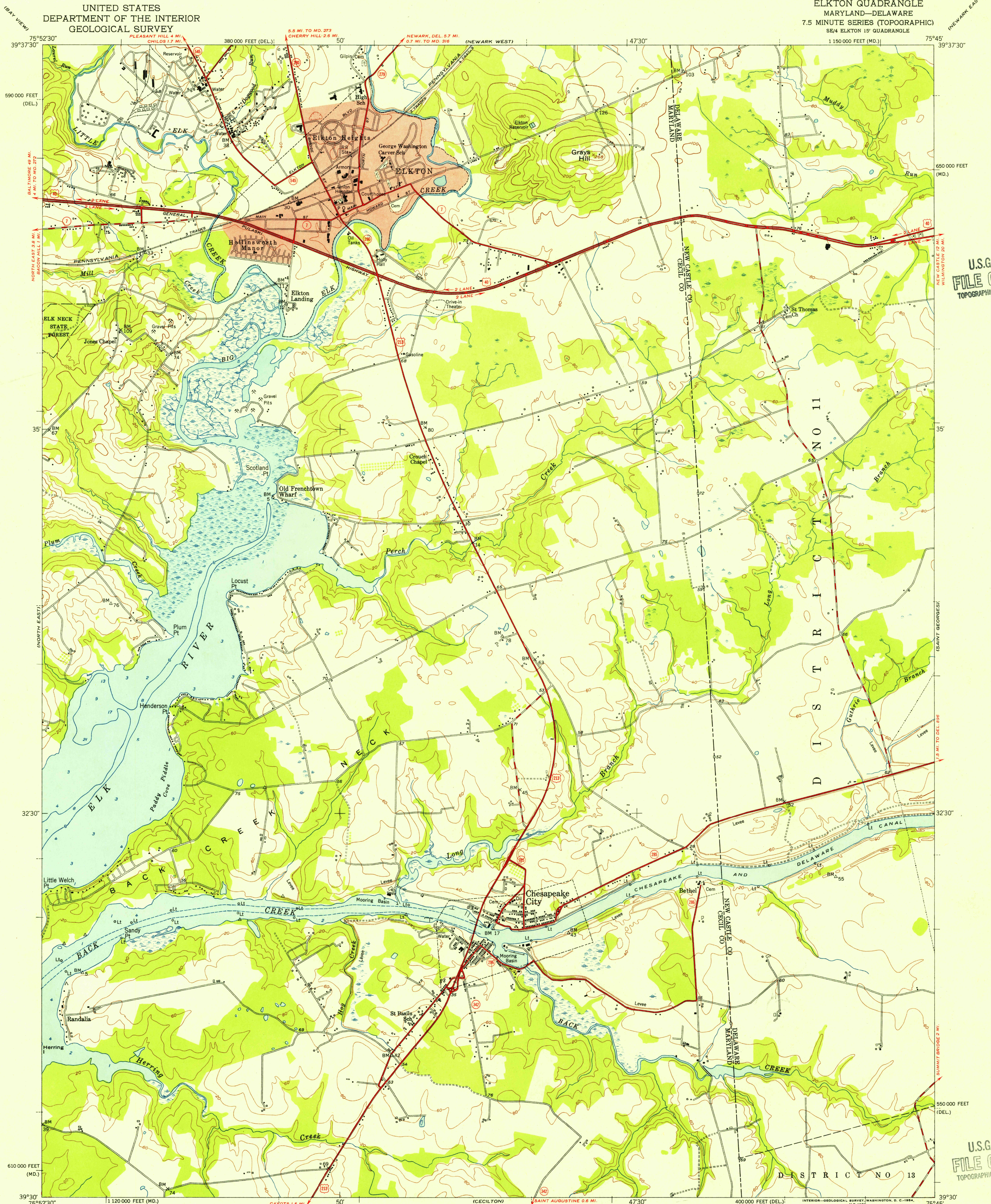


UNITED STATES
DEPARTMENT OF THE INTERIOR
GEOLOGICAL SURVEY

ELKTON QUADRANGLE
MARYLAND-DELAWARE
7.5 MINUTE SERIES (TOPOGRAPHIC)
SE/4 ELKTON 15' QUADRANGLE
1:50,000 FEET (MD.)



U.S.G.S.
FILE COPY
TOPOGRAPHIC DIVISION

U.S.G.S.
FILE COPY
TOPOGRAPHIC DIVISION

Mapped, edited, and published by the Geological Survey

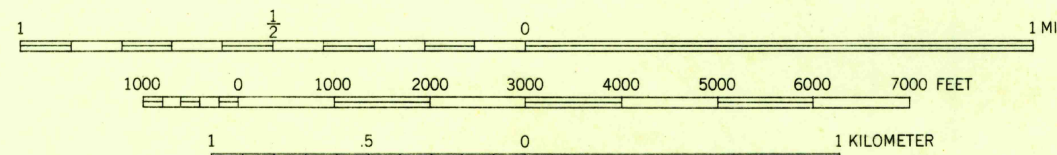
Control by USGS, USC&GS, and USCE

Culture and drainage in part compiled from aerial photographs taken 1952. Topography by plane-table surveys 1939 and 1940. Revised 1953. Hydrography by USC&GS charts 570 and 572 dated 1941 and 1947.

Polyconic projection. 1927 North American datum. 10,000-foot grids based on Maryland and Delaware coordinate systems.

Red tint indicates area in which only landmark buildings are shown.

SCALE 1:24,000



CONTOUR INTERVAL 20 FEET
DATUM IS MEAN SEA LEVEL
DEPTH CURVES AND SOUNDINGS IN FEET-DATUM IS MEAN LOW WATER
SHORELINE SHOWN REPRESENTS THE APPROXIMATE LINE OF MEAN HIGH WATER
THE AVERAGE RANGE OF TIDE IS 2.6 FEET

THIS MAP COMPLIES WITH NATIONAL MAP ACCURACY STANDARDS
FOR SALE BY U.S. GEOLOGICAL SURVEY, WASHINGTON 25, D.C.
A FOLDER DESCRIBING TOPOGRAPHIC MAPS AND SYMBOLS IS AVAILABLE ON REQUEST

ROAD CLASSIFICATION
Heavy-duty 4 LANE 16 LANE Light-duty
Medium-duty 4 LANE 16 LANE Unimproved dirt
U. S. Route State Route



USGS
Historical File
Topographic Division

ELKTON, MD.-DEL.
SE/4 ELKTON 15' QUADRANGLE
N3930-W7545/7.5

1953

OCT 14 1954