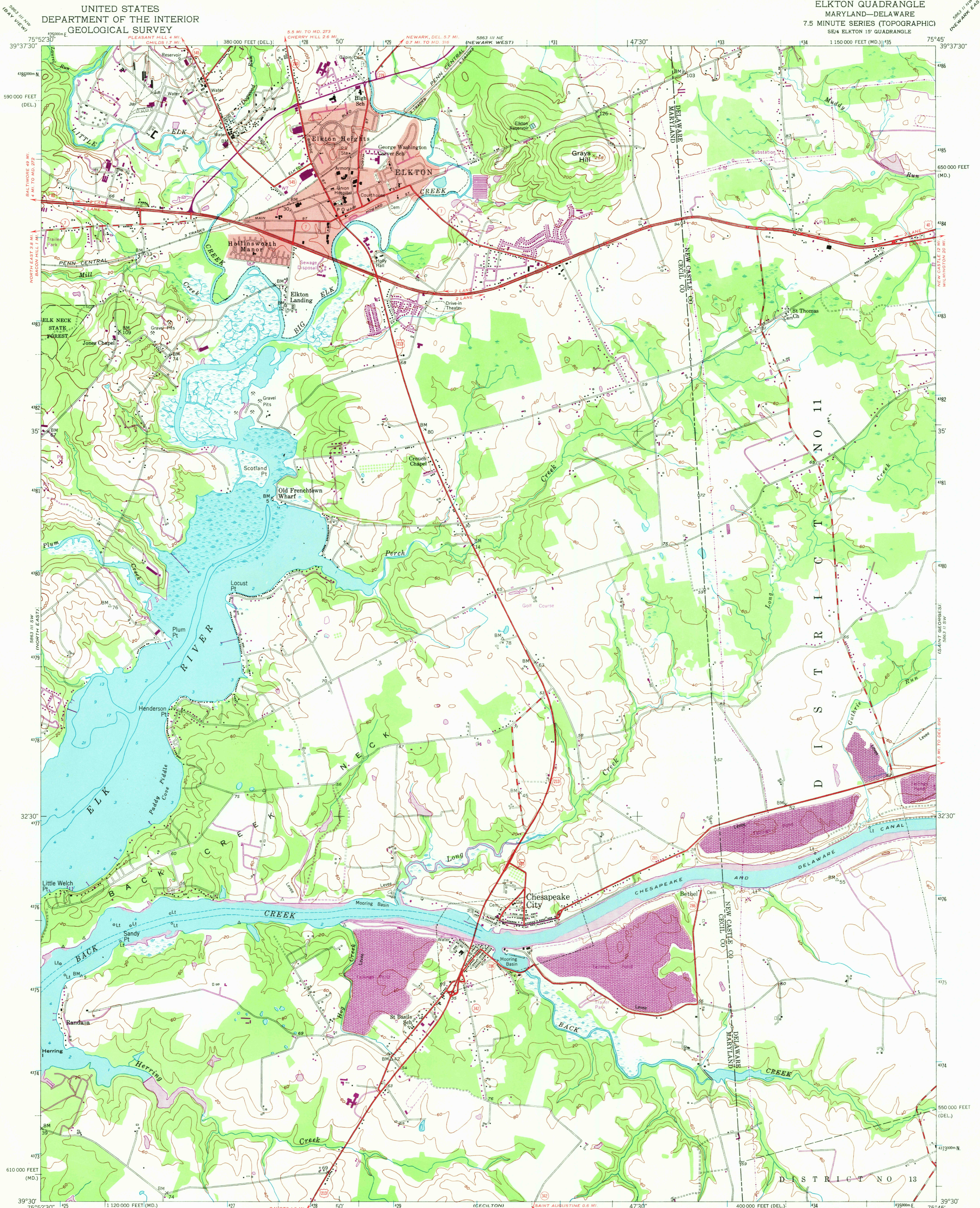


UNITED STATES
DEPARTMENT OF THE INTERIOR
GEOLOGICAL SURVEY

ELKTON QUADRANGLE
MARYLAND-DELAWARE
7.5 MINUTE SERIES (TOPOGRAPHIC)
SE/4 ELKTON 15' QUADRANGLE



Mapped, edited, and published by the Geological Survey
Control by USGS, USC&GS, and USCE
Culture and drainage in part compiled from aerial photographs
taken 1952. Topography by plane-table surveys 1939 and 1940
Revised 1953. Hydrography from USC&GS charts 570 and 572
dated 1941 and 1947
Polyconic projection. 1927 North American datum
10,000-foot grids based on Maryland
and Delaware coordinate systems
Red tint indicates area in which only
landmark buildings are shown
1000-meter Universal Transverse Mercator grid ticks,
zone 18, shown in blue

SCALE 1:24,000
CONTOUR INTERVAL 20 FEET
DATUM IS MEAN SEA LEVEL
DEPTH CURVES AND SOUNDINGS IN FEET—DATUM IS MEAN LOW WATER
SHORELINE SHOWN REPRESENTS THE APPROXIMATE LINE OF MEAN HIGH WATER
THE AVERAGE RANGE OF TIDE IS 2.6 FEET
THIS MAP COMPLIES WITH NATIONAL MAP ACCURACY STANDARDS
FOR SALE BY U. S. GEOLOGICAL SURVEY, WASHINGTON, D. C. 20242
A FOLDER DESCRIBING TOPOGRAPHIC MAPS AND SYMBOLS IS AVAILABLE ON REQUEST

ROAD CLASSIFICATION
Heavy-duty 4 LANE 16 LANE Light-duty
Medium-duty 4 LANE 16 LANE Unimproved dirt
U. S. Route State Route
USGS
Historical File
Topographic Division
ELKTON, MD.—DEL.
SE/4 ELKTON 15' QUADRANGLE
N3930—W7545/7.5
1953
PHOTOREVISED 1970
AMS 5863 III SE—SERIES V833