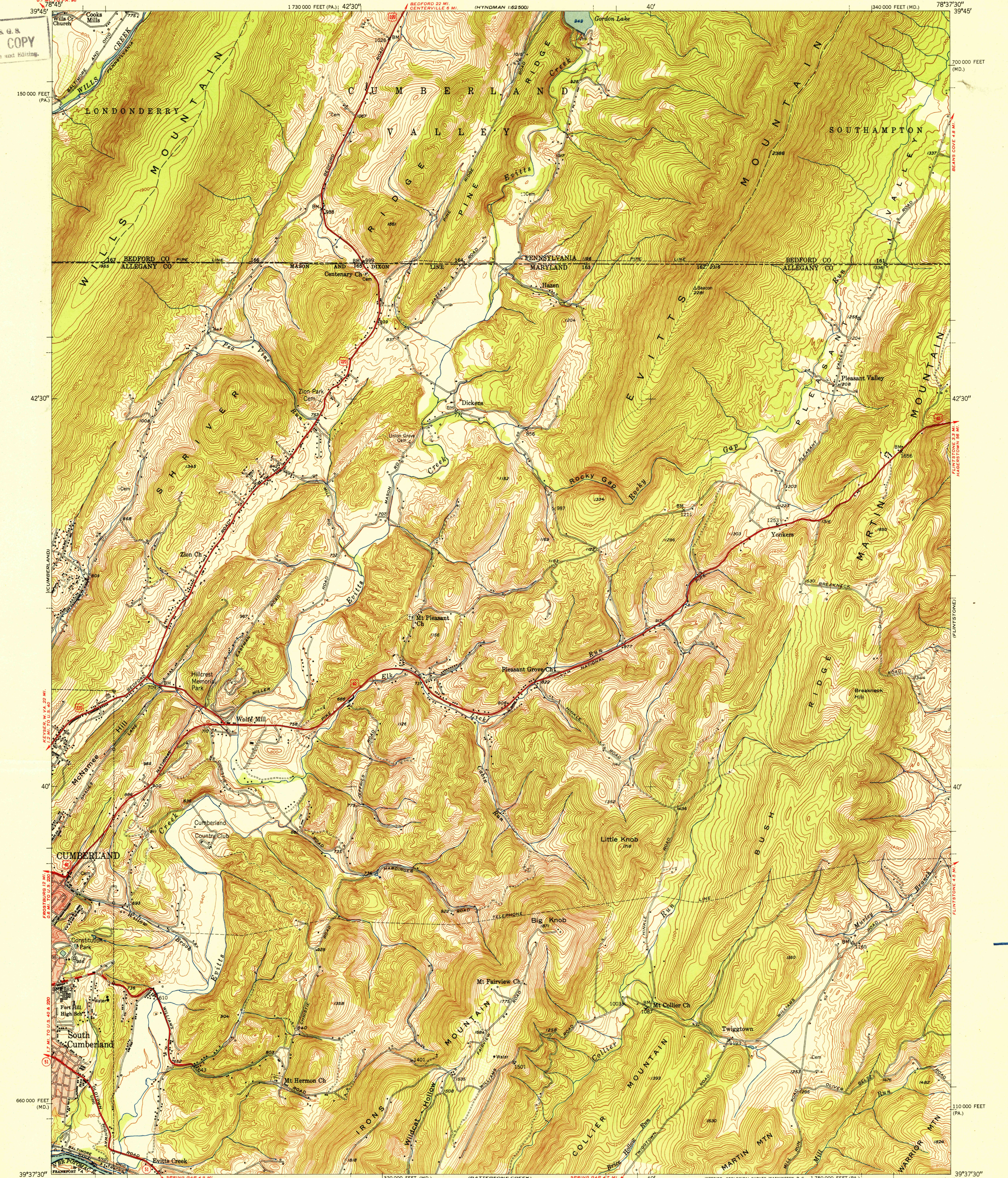


UNITED STATES
DEPARTMENT OF THE INTERIOR
GEOLOGICAL SURVEY

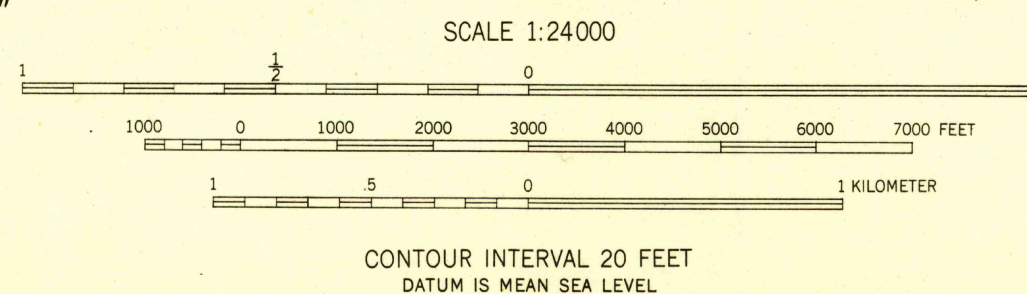
EVITTS CREEK QUADRANGLE
MARYLAND-PENNSYLVANIA-WEST VIRGINIA
7.5 MINUTE SERIES (TOPOGRAPHIC)
NW/4 FLINTSTONE 15' QUADRANGLE

U.S.G.S.
FILE COPY
Inspection and Editing



Mapped, edited, and published by the Geological Survey
Control by USGS and USC&GS
Topography from aerial photographs by multiplex methods
Aerial photographs taken 1947. Field check 1949
Polyconic projection. 1927 North American datum
10,000-foot grids based on Maryland coordinate system,
and Pennsylvania coordinate system, south zone
Red tint indicates area in which only
landmark buildings are shown

APPROXIMATE MEAN
DECLINATION, 1949



CONTOUR INTERVAL 20 FEET
DATUM IS MEAN SEA LEVEL

THIS MAP COMPLIES WITH NATIONAL MAP ACCURACY STANDARDS
FOR SALE BY U. S. GEOLOGICAL SURVEY, WASHINGTON 25, D. C.
A FOLDER DESCRIBING TOPOGRAPHIC MAPS AND SYMBOLS IS AVAILABLE ON REQUEST

USGS
Historical File
Topographic Division

ROAD CLASSIFICATION
Heavy-duty... Lane Lane Light-duty...
Medium-duty... Lane Lane Unimproved dirt...
U. S. Route State Route

EVITTS CREEK, MD.-PA.-W. VA.
NW/4 FLINTSTONE 15' QUADRANGLE
N 3937.5-W 7837.5/7.5

EDITION OF 1951

U.S.G.S.
FILE COPY
Inspection and Editing

OCT 16 1951 2080