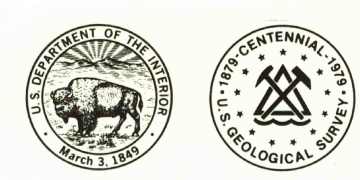


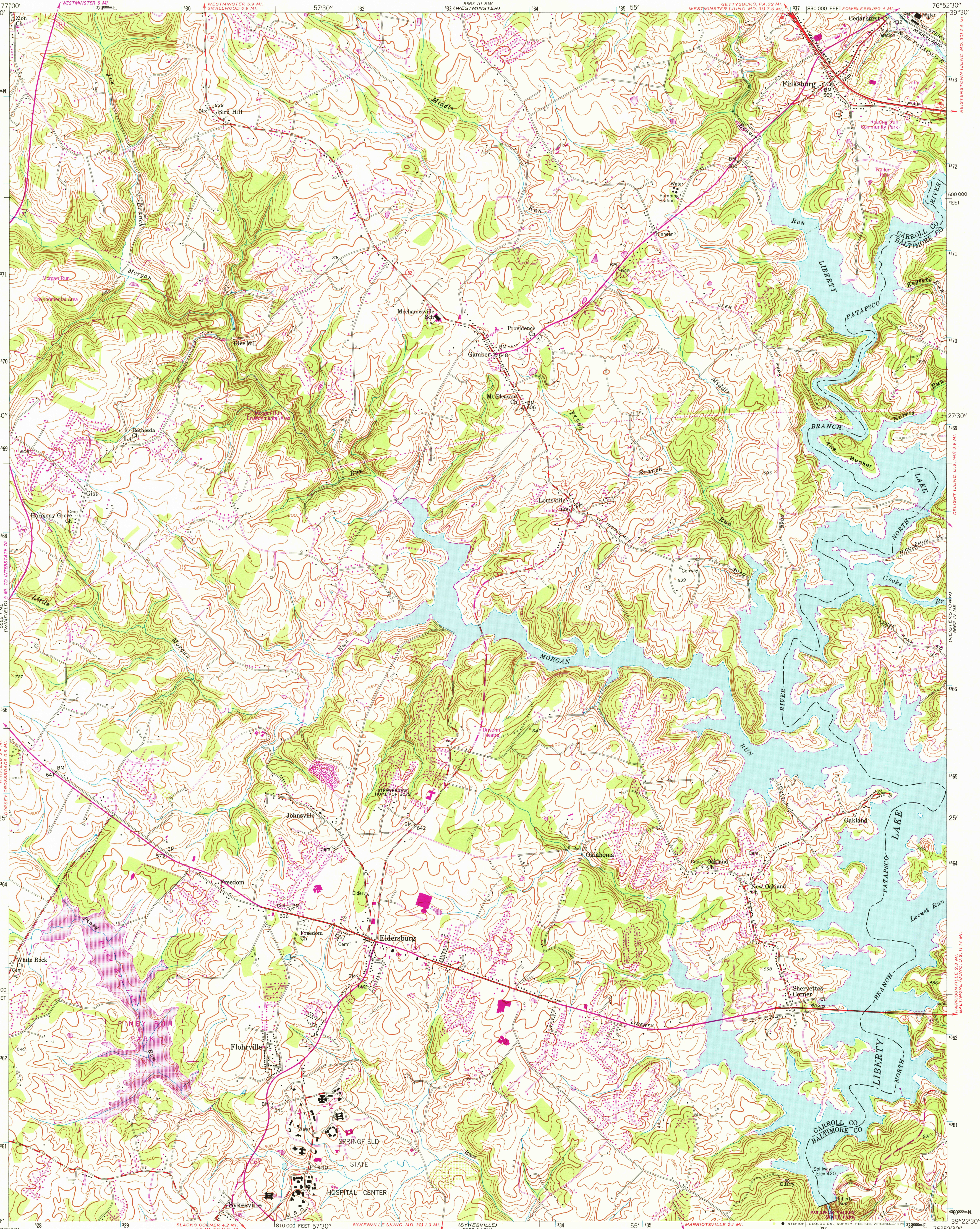


UNITED STATES  
DEPARTMENT OF THE INTERIOR  
GEOLOGICAL SURVEY



UNITED STATES  
DEPARTMENT OF THE ARMY  
CORPS OF ENGINEERS

FINKSBURG QUADRANGLE  
MARYLAND  
7.5 MINUTE SERIES (TOPOGRAPHIC)



Maped by the Army Map Service  
Edited and published by the Geological Survey  
Control by USGS, USC&GS, USCE, and USSCS  
Topography from aerial photographs by stereophotogrammetric methods. Aerial photographs taken 1943. Field check 1944  
Culture revised by the Geological Survey 1953  
Polyconic projection. 1927 North American datum  
10,000-foot grid based on Maryland coordinate system  
1000-meter Universal Transverse Mercator grid ticks,  
Zone 18, shown in blue  
There may be private inholdings within the boundaries of  
the National or State reservations shown on this map  
Revisions shown in purple compiled by the Geological  
Survey from aerial photographs taken 1977 and other source data  
This information not field checked. Map edited 1979

Boundary lines shown in purple compiled from latest  
information available from the controlling authority

SCALE 1:24,000  
1 1000 0 1000 2000 3000 4000 5000 6000 7000 FEET  
1 5 0 KILOMETER  
CONTOUR INTERVAL 20 FEET  
NATIONAL GEODETIC VERTICAL DATUM OF 1929  
THIS MAP COMPLIES WITH NATIONAL MAP ACCURACY STANDARDS  
FOR SALE BY U.S. GEOLOGICAL SURVEY, RESTON, VIRGINIA 22092  
A FOLDER DESCRIBING TOPOGRAPHIC MAPS AND SYMBOLS IS AVAILABLE ON REQUEST

ROAD CLASSIFICATION  
Heavy-duty ——— Light-duty ———  
Medium-duty ——— Unimproved dirt ———  
U.S. Route ——— State Route ———  
USGS  
Historical File  
Topographic Division  
FINKSBURG, MD.  
N 3922.5-W 7652.5/7.5  
1953  
PHOTOREVISED 1979  
AMS 5662 IV NW-SERIES V833

FEB 19 1980  
2960