

UNITED STATES
DEPARTMENT OF THE INTERIOR
GEOLOGICAL SURVEY

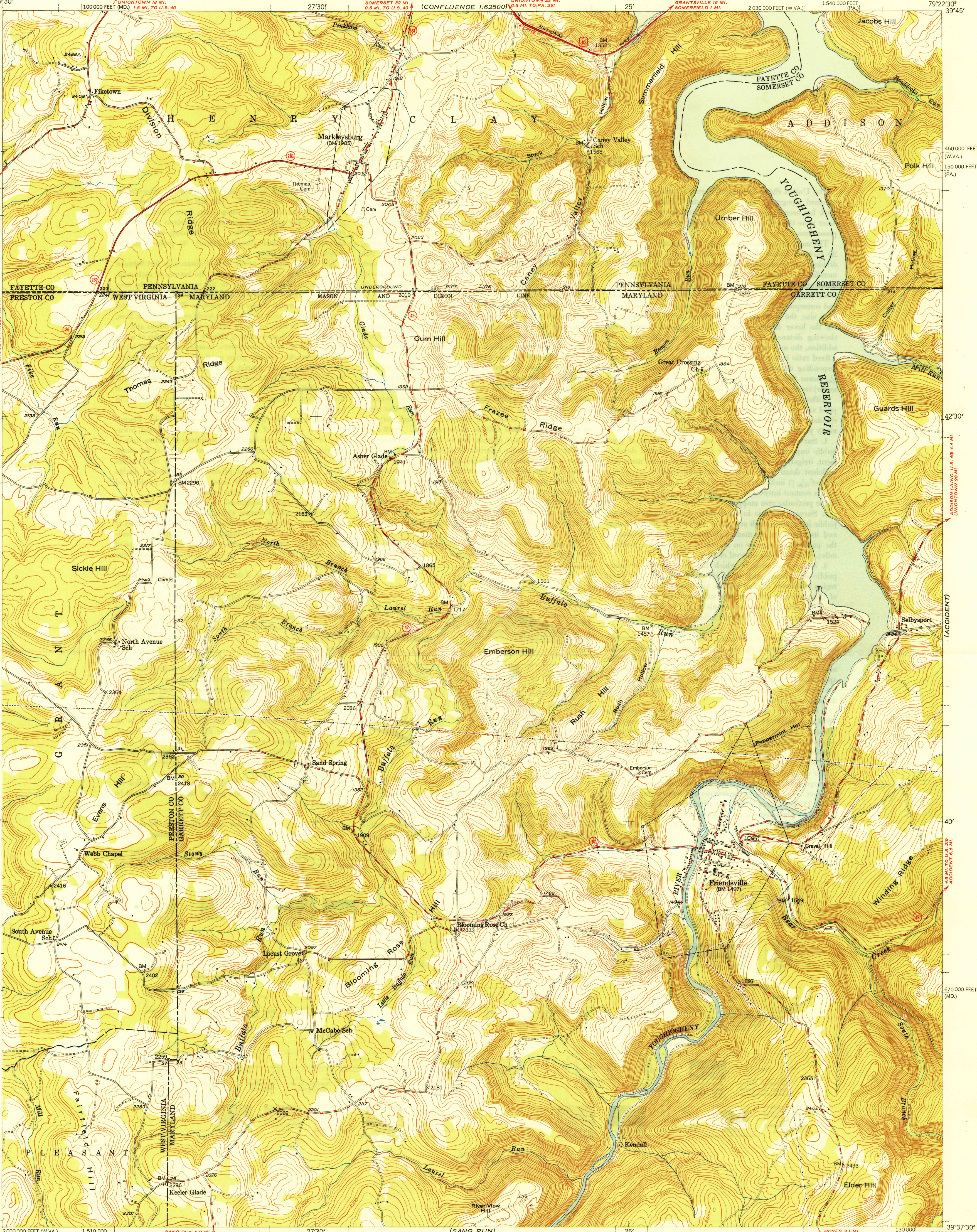
STATE OF MARYLAND
DEPARTMENT OF GEOLOGY, MINES, AND
WATER RESOURCES
JOSEPH T. SINGEWALD, JR., DIRECTOR

STATE OF PENNSYLVANIA
DEPARTMENT OF INTERNAL AFFAIRS
WILLIAM S. LIVENGOD, JR., SECRETARY
TOPOGRAPHIC AND GEOLOGIC SURVEY
STANLEY HOAMAN CATHCART, STATE GEOLOGIST

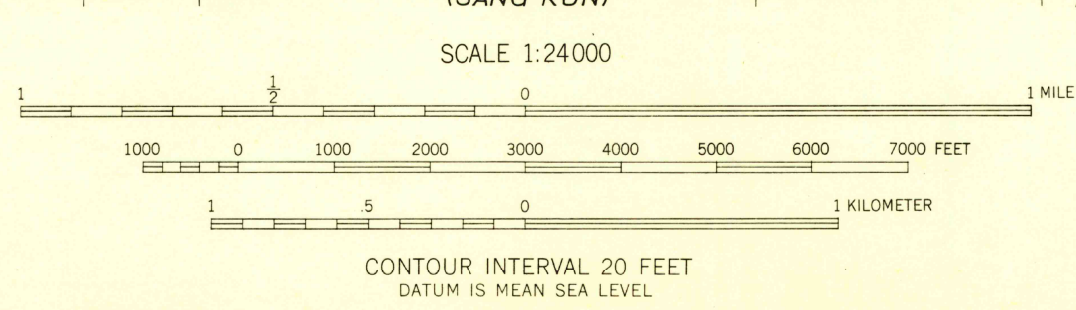
FRIENDSVILLE QUADRANGLE
MARYLAND-PENNSYLVANIA-
WEST VIRGINIA
7.5 MINUTE SERIES (TOPOGRAPHIC)

(CONFLUENCE)
1:62500

U.S.G.S.
FILE COPY
Inspection and Editing



Maped, edited, and published by the Geological Survey
Control by USGS, USC&GS, and USED
Topography from aerial photographs by multiplex methods
Aerial photographs taken 1946. Field check 1947
Polyconic projection, 1927 North American datum
10,000-foot grids based on Maryland coordinate system,
Pennsylvania coordinate system, south zone and
West Virginia coordinate system, north zone
Blue hatching indicates areas subject to controlled inundation
Normal pool elevation 1439 feet. Spillway elevation 1468 feet



USGS
Historical File
Topographic Division

U.S.G.S.
FILE COPY
Inspection and Editing

ROAD CLASSIFICATION
HARD-SURFACE ALL WEATHER ROADS DRY WEATHER ROADS
Heavy-duty ———— **LANE LANE** Improved dirt ————
Medium-duty ———— **LANE LANE** Unimproved dirt ————
Loose-surface, graded, or narrow hard-surface ————
○ U. S. Route ○ State Route

FRIENDSVILLE, MD.-PA.-W.VA.
N3937.5-W7922.5/7.5
PRINTED 1949

THIS MAP COMPLIES WITH NATIONAL MAP ACCURACY STANDARDS
FOR SALE BY U. S. GEOLOGICAL SURVEY, WASHINGTON 25, D. C.

MAY 18 1949 3200