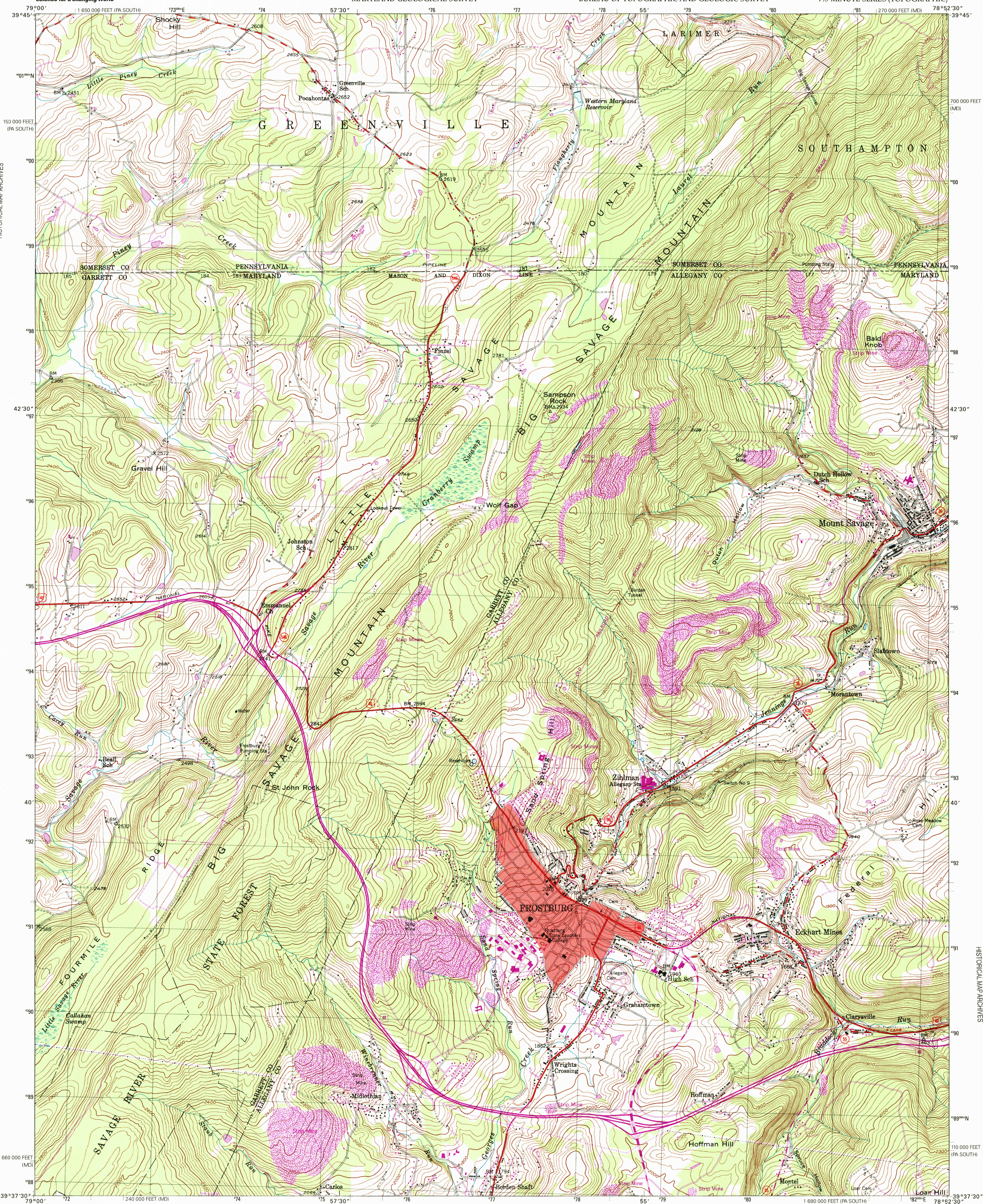


RECEIVED

JUN 3 0 1999

USGS NMD  
HISTORICAL MAP ARCHIVES

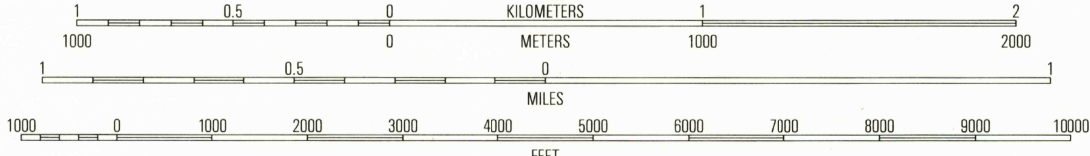
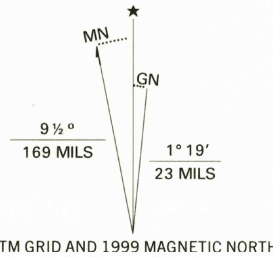


USGS NMD  
HISTORICAL MAP ARCHIVES

JUN 3 0 1999

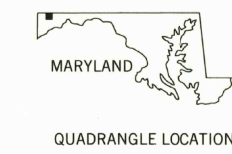
RECEIVED

Produced by the United States Geological Survey  
Topography compiled 1946. Planimetry derived from imagery taken 1977 and other sources. Photosinspected using imagery taken 1998; no major culture or drainage changes observed. Survey control current as of 1949. Boundaries, other than corporate, verified 1999  
North American Datum of 1927 (NAD 27)  
Projection: Maryland coordinate system (Lambert conformal conic)  
10 000-foot ticks: Maryland coordinate system and Pennsylvania coordinate system, south zone  
1000-meter Universal Transverse Mercator grid, zone 17  
North American Datum of 1983 (NAD 83) is shown by dashed corner ticks. The values of the shift between NAD 27 and NAD 83 for 7.5-minute intersections are obtainable from National Geodetic Survey NADCON software  
There may be private inholdings within the boundaries of the National or State reservations shown on this map  
Information shown in purple may not meet USGS content standards and may conflict with previously mapped contours



CONTOUR INTERVAL 20 FEET  
NATIONAL GEODETIC VERTICAL DATUM OF 1929  
TO CONVERT FROM FEET TO METERS, MULTIPLY BY 0.3048

THIS MAP COMPLIES WITH NATIONAL MAP ACCURACY STANDARDS  
FOR SALE BY U.S. GEOLOGICAL SURVEY, P.O. BOX 25286, DENVER, COLORADO 80225  
A FOLDER DESCRIBING TOPOGRAPHIC MAPS AND SYMBOLS IS AVAILABLE ON REQUEST



QUADRANGLE LOCATION

1	2	3
4	5	6
7	8	

ADJOINING 7.5' QUADRANGLE NAMES

ROAD CLASSIFICATION  
Primary highway hard surface  
Secondary highway hard surface  
Light-duty road, hard or improved surface  
Unimproved road  
Interstate Route  
U.S. Route  
State Route

FROSTBURG, MD-PA  
1998

NIMA 5263 III NW-SERIES V833

