

5562 I SE
DAMASCUS

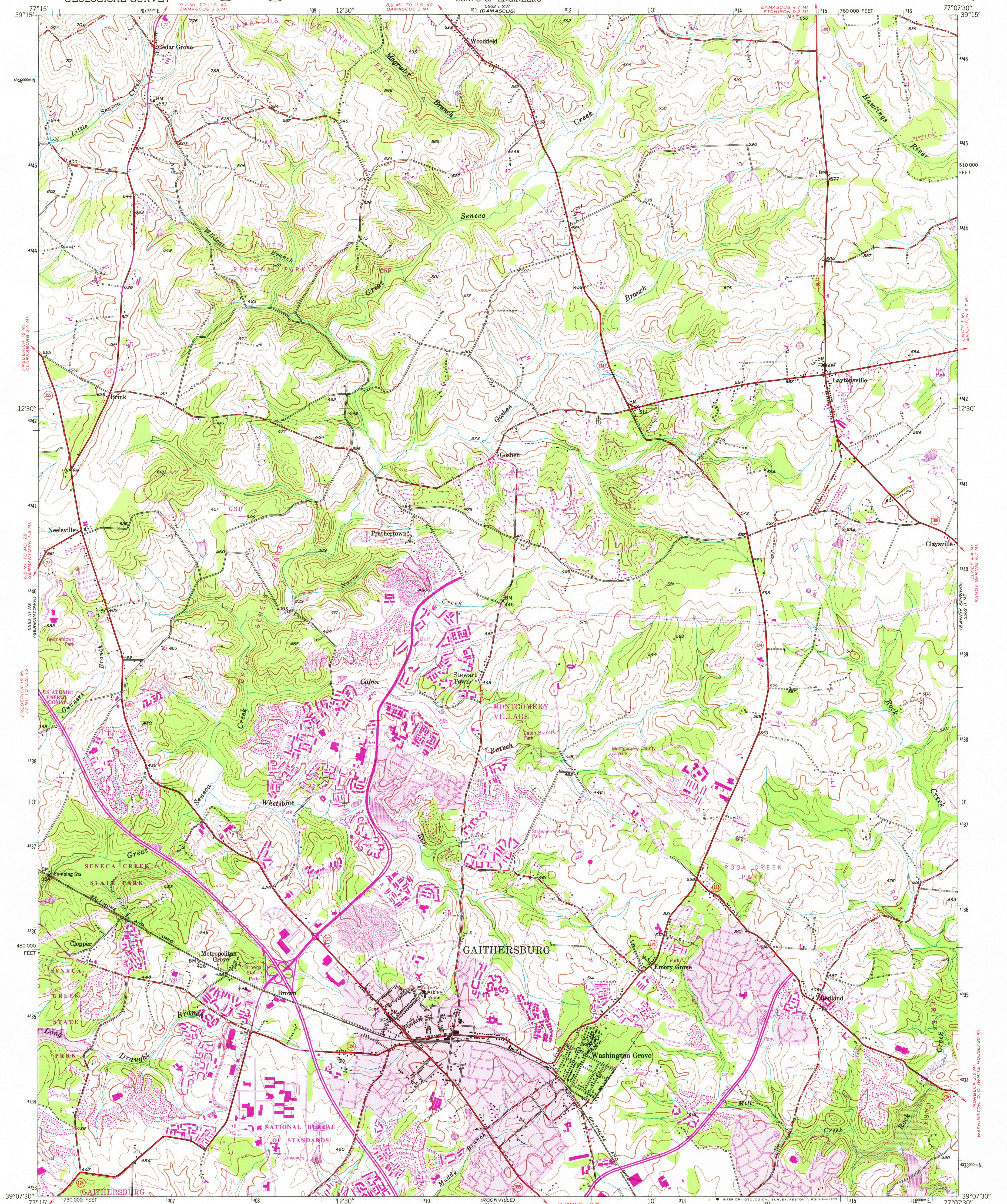
UNITED STATES
DEPARTMENT OF THE INTERIOR
GEOLOGICAL SURVEY



UNITED STATES
DEPARTMENT OF THE ARMY
CORPS OF ENGINEERS

GAITHERSBURG QUADRANGLE
MARYLAND-MONTGOMERY CO.
7.5 MINUTE SERIES (TOPOGRAPHIC)

5562 I SE
DAMASCUS



5562 I SE
DAMASCUS

Map by U.S. Forest Service
Edited and published by the Geological Survey
Control by USC&GS, WSSD, and USGS

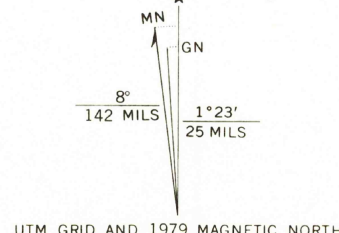
Topography from aerial photographs by KEK plotter 1944
Aerial photographs taken 1943. Field check 1945

Polyconic projection. 1927 North American datum
10,000-foot grid based on Maryland coordinate system
1000-meter Universal Transverse Mercator grid ticks,
zone 18, shown in blue

To place on the predicted North American Datum 1983
move the projection lines 8 meters south and
25 meters west as shown by dashed corner ticks

There may be private inholdings within the boundaries of
the National or State reservations shown on this map

Area covered by dashed light-purple pattern is subject to controlled
inundation



SCALE 1:24,000

1000 0 1000 2000 3000 4000 5000 6000 7000 FEET

1 5 0 1 KILOMETER

CONTOUR INTERVAL 20 FEET
NATIONAL GEODETIC VERTICAL DATUM OF 1929

THIS MAP COMPLIES WITH NATIONAL MAP ACCURACY STANDARDS
FOR SALE BY U.S. GEOLOGICAL SURVEY, RESTON, VIRGINIA 22092
A FOLDER DESCRIBING TOPOGRAPHIC MAPS AND SYMBOLS IS AVAILABLE ON REQUEST



QUADRANGLE LOCATION

ROAD CLASSIFICATION	
Heavy-duty	Light-duty
Medium-duty	Unimproved dirt
Interstate Route	U.S. Route
	State Route

Revisions shown in purple and woodland compiled by the Geological
Survey from aerial photographs taken 1977 and other source data
This information not field checked. Map edited 1979
Boundary lines shown in purple compiled from latest
information available from the controlling authority
Purple tint indicates extension of urban areas

Historical File
Topographic Division

GAITHERSBURG, MD.
N3907.5-W7707.5/7.5
1945
PHOTOREVISED 1979
AMS 5562 I NW-SERIES V833

FEB 26 1980

3/00