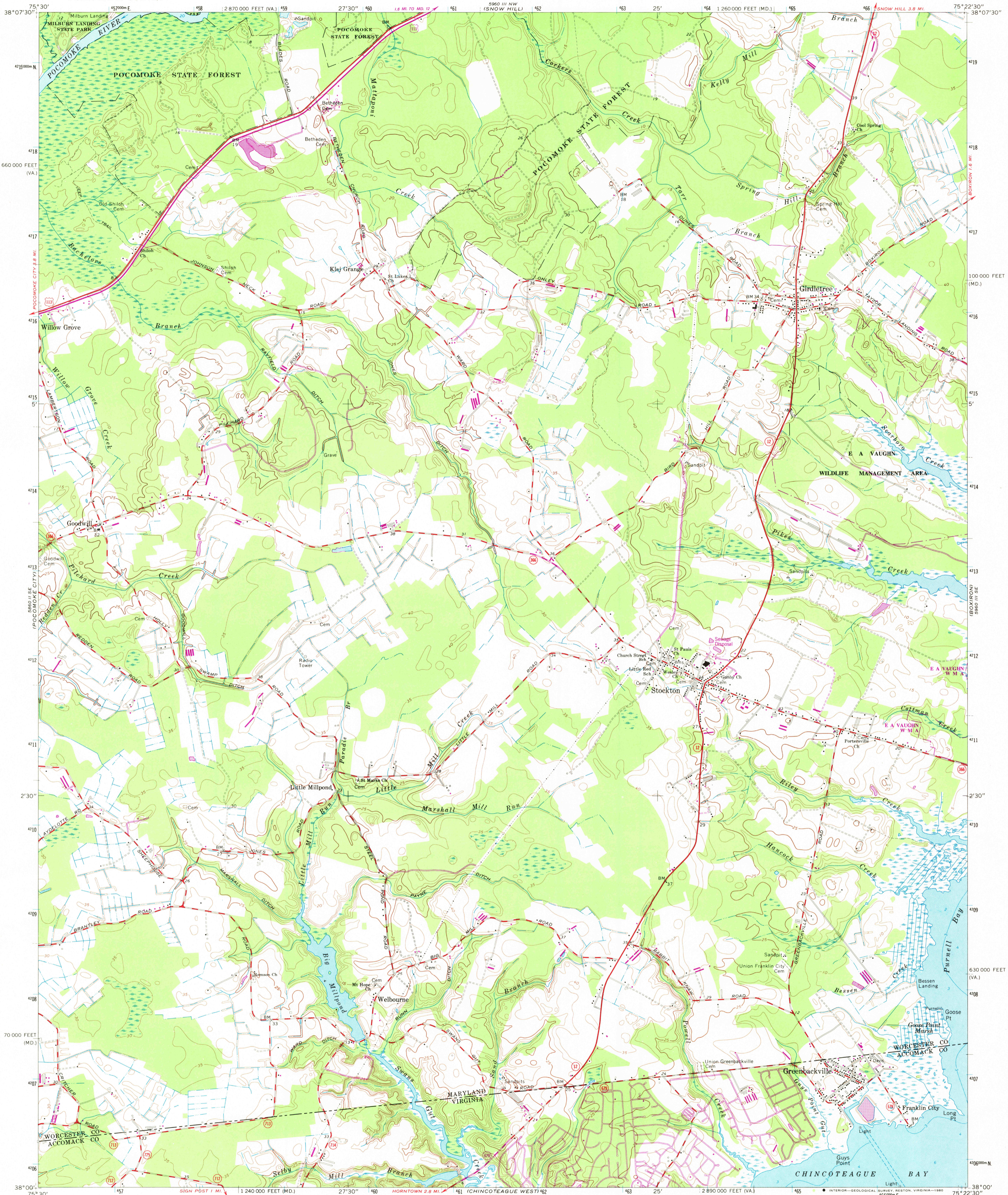


UNITED STATES  
DEPARTMENT OF THE INTERIOR  
GEOLOGICAL SURVEY

GIRDLETREE QUADRANGLE  
MARYLAND-VIRGINIA  
7.5 MINUTE SERIES (TOPOGRAPHIC)



Mapped, edited, and published by the Geological Survey  
Control by USGS, NOS/NOAA, and USCE  
Topography by photogrammetric methods from aerial  
photographs taken 1963. Field checked 1966.  
Selected hydrographic data compiled from NOS  
charts 1220 and 1224 (1966). This information is  
not intended for navigational purposes.  
Polyconic projection. 10,000-foot grid based on Maryland coordinate  
system, and Virginia coordinate system, south zone  
1000-meter Universal Transverse Mercator grid ticks,  
zone 18, shown in blue. 1927 North American Datum  
to place on the predicted North American Datum 1983  
move the projection lines 8 meters south and  
31 meters west as shown by dashed corner ticks  
There may be private holdings within the boundaries of  
the National or State reservations shown on this map

Revisions shown in purple compiled in cooperation  
with Commonwealth of Virginia agencies from aerial  
photographs taken 1978 and other source data  
This information not field checked. Map edited 1980

SCALE 1:24 000  
CONTOUR INTERVAL 5 FEET  
NATIONAL GEODETIC VERTICAL DATUM OF 1929  
DEPTH CURVES AND SOUNDINGS IN FEET-DATUM IS MEAN LOW WATER  
THE RELATIONSHIP BETWEEN THE TWO DATUMS IS VARIABLE  
SHORELINE SHOWN REPRESENTS THE APPROXIMATE LINE OF MEAN HIGH WATER  
THE MEAN RANGE OF TIDE IS APPROXIMATELY 0.6 FEET  
THIS MAP COMPLIES WITH NATIONAL MAP ACCURACY STANDARDS  
FOR SALE BY U. S. GEOLOGICAL SURVEY, RESTON, VIRGINIA 22092  
AND VIRGINIA DIVISION OF MINERAL RESOURCES, CHARLOTTESVILLE, VIRGINIA 22903  
A FOLDER DESCRIBING TOPOGRAPHIC MAPS AND SYMBOLS IS AVAILABLE ON REQUEST

ROAD CLASSIFICATION  
Heavy-duty — Light-duty  
Medium-duty — Unimproved dirt  
U.S. Route — State Route  
USCS  
Historical File  
Topographic Division  
GIRDLETREE, MD.—VA.  
N3800—W7522.5/7.5  
1966  
PHOTOREVISED 1980  
DMA 5960 III SW—SERIES V833

NOV 12 1980

1985