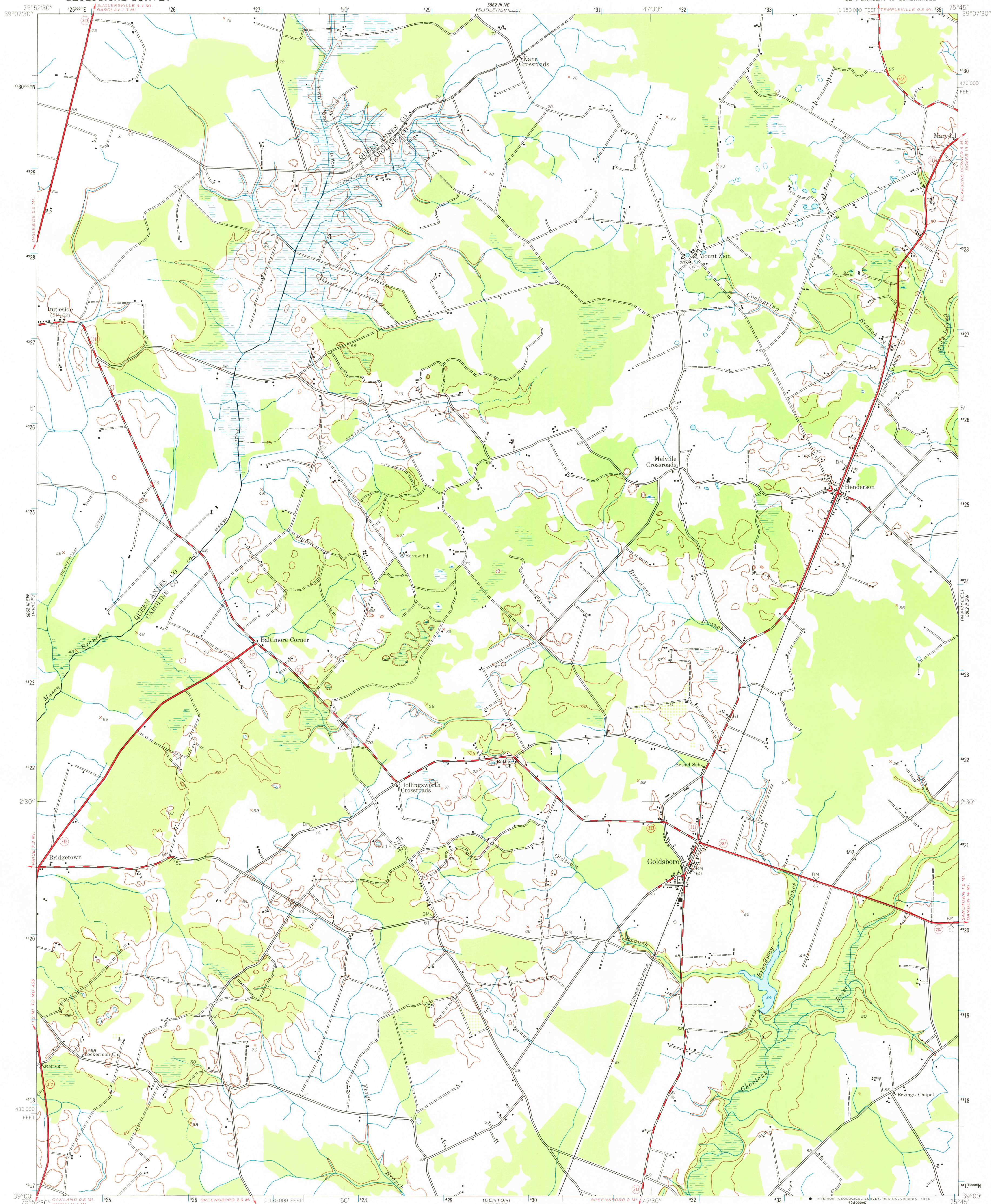


UNITED STATES  
DEPARTMENT OF THE INTERIOR  
GEOLOGICAL SURVEY

GOLDSBORO QUADRANGLE  
MARYLAND  
7.5 MINUTE SERIES (TOPOGRAPHIC)  
SE/4 BARCLAY 15' QUADRANGLE



Mapped by the Army Map Service  
Published for civil use by the Geological Survey

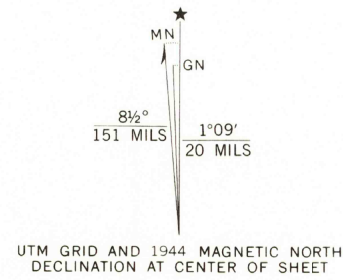
Control by USC&GS

Topography from aerial photographs by photogrammetric methods  
and by planetable surveys 1944. Aerial photographs taken 1942

Polyconic projection. 1927 North American datum  
10,000-foot grid based on Maryland coordinate system  
1000-meter Universal Transverse Mercator grid ticks,  
zone 18, shown in blue

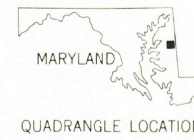
Map photoinspected 1974

No major culture or drainage changes observed



CONTOUR INTERVAL 20 FEET  
NATIONAL GEODETIC VERTICAL DATUM OF 1929

THIS MAP COMPLIES WITH NATIONAL MAP ACCURACY STANDARDS  
FOR SALE BY U.S. GEOLOGICAL SURVEY, RESTON, VIRGINIA 22092  
A FOLDER DESCRIBING TOPOGRAPHIC MAPS AND SYMBOLS IS AVAILABLE ON REQUEST



ROAD CLASSIFICATION	
Heavy duty	Light duty
Medium duty	Unimproved dirt
	State Route

USGS  
Historical File  
Topographic Division

GOLDSBORO, MD.  
SE/4 BARCLAY 15' QUADRANGLE  
N 3900—W 7545/7.5

1944  
PHOTOINSPECTED 1974  
AMS 5862 III SE—SERIES V833

DEC 20 1976

1800