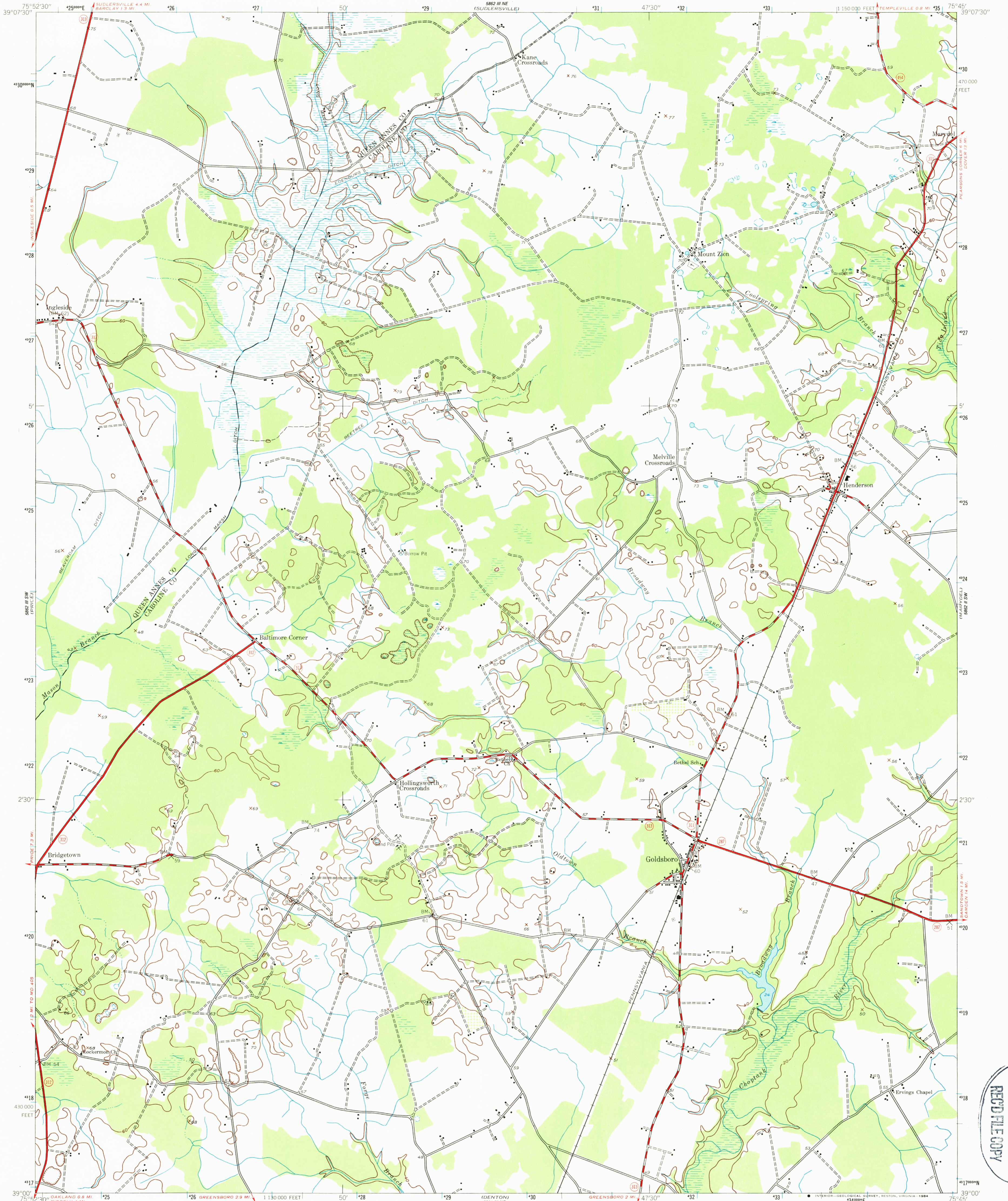


UNITED STATES
DEPARTMENT OF THE INTERIOR
GEOLOGICAL SURVEY

GOLDSBORO, QUADRANGLE
MARYLAND
7.5 MINUTE SERIES (TOPOGRAPHIC)
SE/4 BARCLAY 15' QUADRANGLE



Mapped by the Army Map Service
Published for civil use by the Geological Survey

Control by USC&GS

Topography from aerial photographs by photogrammetric methods
and by planetable surveys 1944. Aerial photographs taken 1942

Polyconic projection. 1927 North American datum
10,000-foot grid based on Maryland coordinate system
1000-meter Universal Transverse Mercator grid ticks,
zone 18, shown in blue

Map photoinspected 1982

No major culture or drainage changes observed

UTM GRID AND 1944 MAGNETIC NORTH
DECLINATION AT CENTER OF SHEET

SCALE 1:24,000
CONTOUR INTERVAL 20 FEET
NATIONAL GEODETIC VERTICAL DATUM OF 1929

THIS MAP COMPLIES WITH NATIONAL MAP ACCURACY STANDARDS
FOR SALE BY U. S. GEOLOGICAL SURVEY, RESTON, VIRGINIA 22092
A FOLDER DESCRIBING TOPOGRAPHIC MAPS AND SYMBOLS IS AVAILABLE ON REQUEST



ROAD CLASSIFICATION
Heavy-duty ——— Light-duty ———
Medium-duty - - - - - Unimproved dirt = = = = =
○ State Route

GOLDSBORO, MD.
SE/4 BARCLAY 15' QUADRANGLE
N3900—W7545/7.5
PHOTOINSPECTED 1982
1944

AMS 5862 III SE—SERIES V833

USGS AND HISTORICAL MAP
REC'D FILE COPY