

CONFIDENCE
1:62500

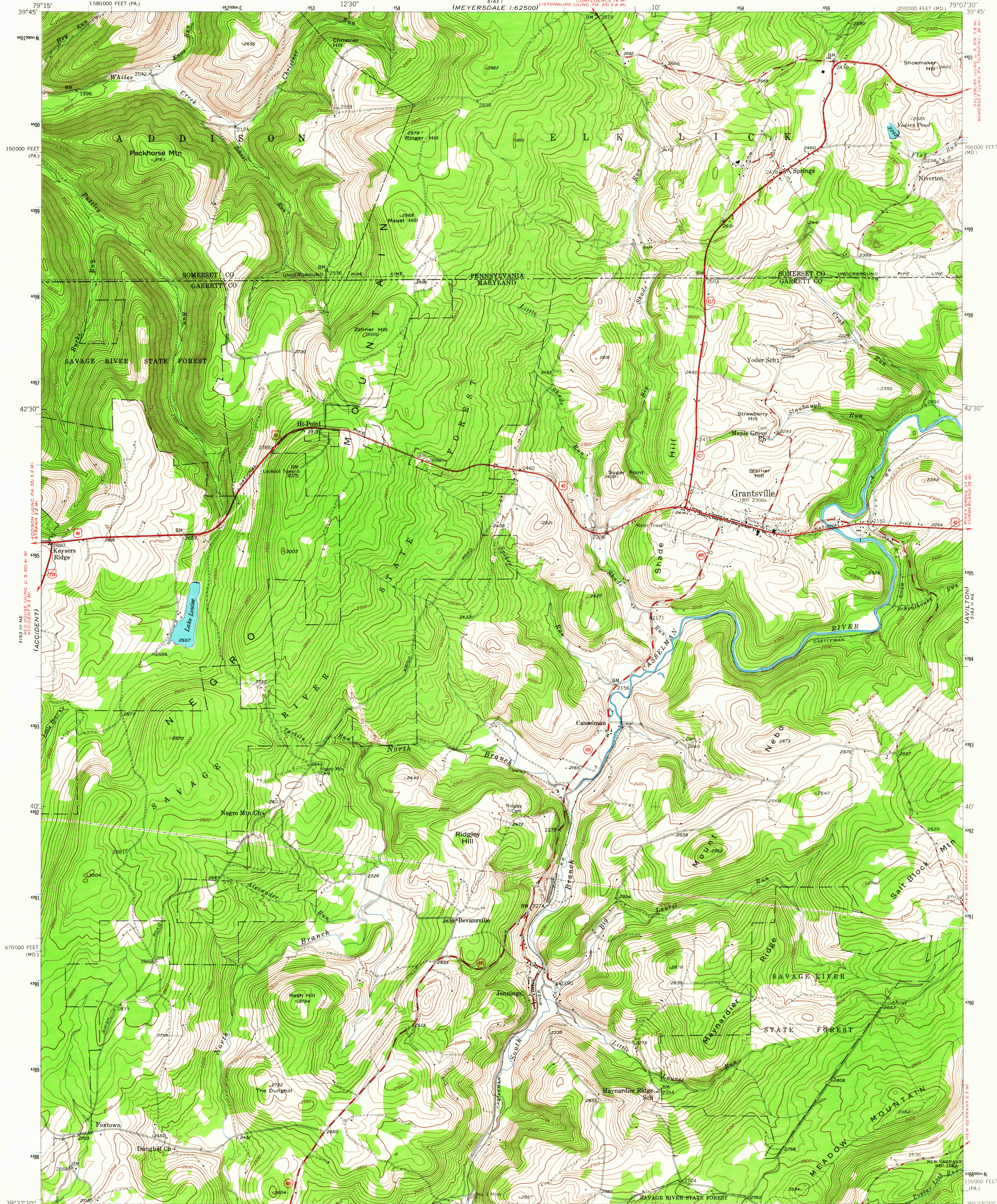
UNITED STATES
DEPARTMENT OF THE INTERIOR
GEOLOGICAL SURVEY

STATE OF MARYLAND
DEPARTMENT OF GEOLOGY, MINES, AND WATER RESOURCES
JOSEPH T. SINGEWALD, JR., DIRECTOR

STATE OF PENNSYLVANIA
DEPARTMENT OF INTERNAL AFFAIRS
WILLIAM S. LIVENGOD, JR., SECRETARY
TOPOGRAPHIC AND GEOLOGIC SURVEY
STANLEY HOLMAN CATHCART, STATE GEOLOGIST

GRANTSVILLE QUADRANGLE
MARYLAND-PENNSYLVANIA
7.5 MINUTE SERIES (TOPOGRAPHIC)

CONFIDENCE
1:62500
(MEYERSDALE)



Mapped, edited, and published by the Geological Survey
Control by USGS
Topography from aerial photographs by multiplex methods
Aerial photographs taken 1946. Field check 1946
Polyconic projection. 1927 North American datum
10,000-foot grids based on Maryland coordinate system
and Pennsylvania coordinate system, south zone
1000-meter Universal Transverse Mercator grid ticks,
zone 17, shown in blue

UTM GRID AND 1946 MAGNETIC NORTH
DECLINATION AT CENTER OF SHEET

SCALE 1:24,000
1 MILE
1 KILOMETER
CONTOUR INTERVAL 20 FEET
DATUM IS MEAN SEA LEVEL

USGS
Historical File
Topographic Division

ROAD CLASSIFICATION
HARD-SURFACE ALL WEATHER ROADS DRY WEATHER ROADS
Heavy-duty 4 LANE LANE Improved dirt
Medium-duty 4 LANE LANE Unimproved dirt
Loose-surface, graded, or narrow hard-surface
U. S. Route State Route

U.S.G.S.
FILE COPY
TOPOGRAPHIC DIVISION

GRANTSVILLE, MD.-PA.
N3937.5-W7907.5/7.5
1946
AMS 5163 II NW-SERIES V833

1930
MAR 25 1966