

CONFLUENCE  
1:62500

U. S. G. S.  
FILE COPY

Inspection and Editing.

UNITED STATES  
DEPARTMENT OF THE INTERIOR  
GEOLOGICAL SURVEY

STATE OF MARYLAND

DEPARTMENT OF GEOLOGY, MINES, AND WATER RESOURCES  
JOSEPH T. SINGEWALD, JR., DIRECTOR

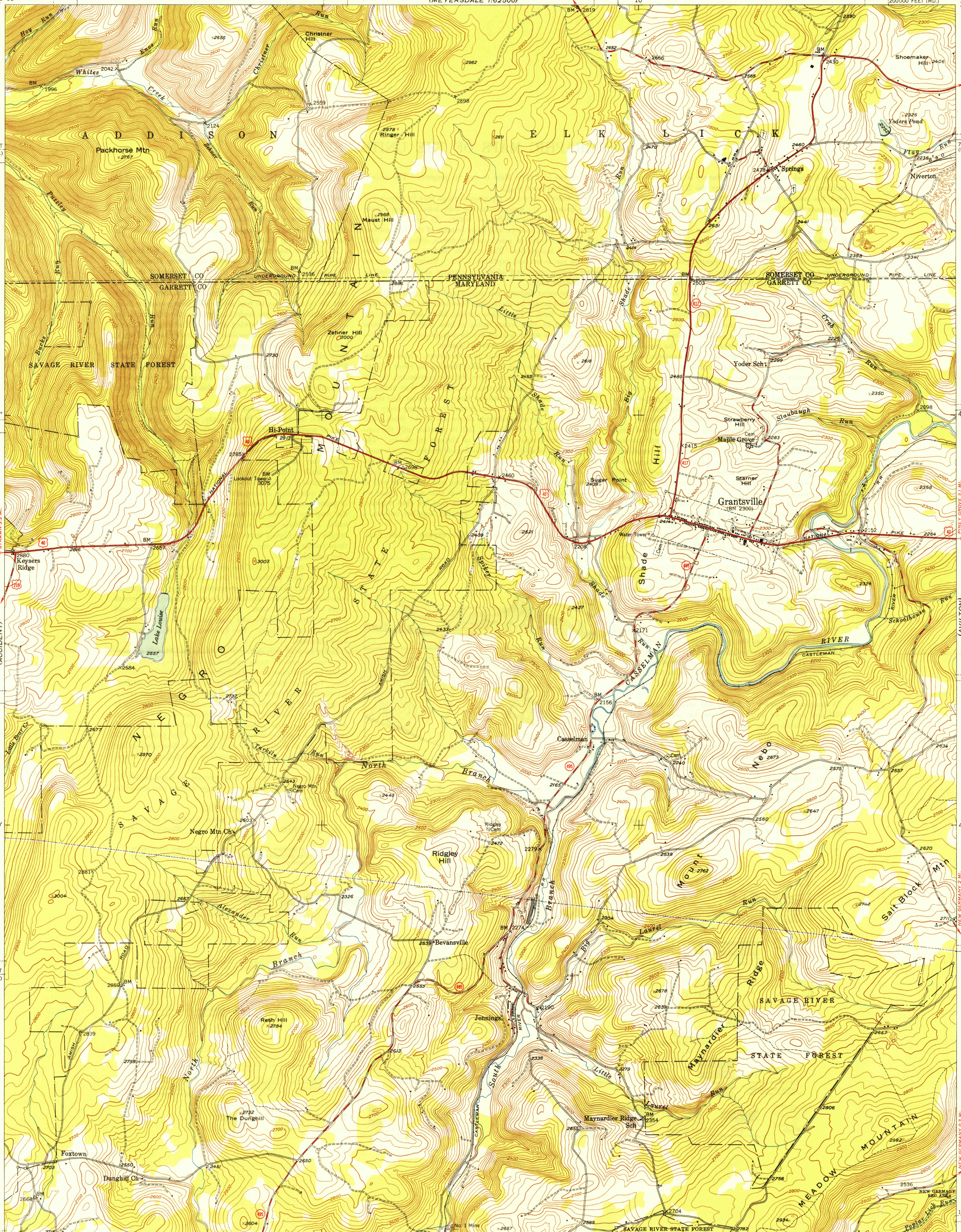
STATE OF PENNSYLVANIA  
DEPARTMENT OF INTERNAL AFFAIRS  
WILLIAM S. LIVENGOD, JR., SECRETARY  
TOPOGRAPHIC AND GEOLOGIC SURVEY  
STANLEY HOLMAN CATHCART, STATE GEOLOGIST

GRANTSVILLE QUADRANGLE  
MARYLAND-PENNSYLVANIA  
7.5 MINUTE SERIES (TOPOGRAPHIC)

(MEYERSDALE)  
1:62500

U. S. G. S.  
FILE COPY

Inspection and Editing.



Mapped, edited, and published by the Geological Survey  
Control by USGS

Topography from aerial photographs by multiplex methods  
Aerial photographs taken 1946. Field check 1946

Polycyclic projection. 1927 North American datum  
10,000-foot grids based on Maryland coordinate system  
and Pennsylvania coordinate system, south zone.

TRUE NORTH  
MAGNETIC NORTH

APPROXIMATE MEAN  
DECLINATION, 1946

SCALE 1:24,000

1 0 1000 2000 3000 4000 5000 6000 7000 FEET

1 0 5 10 KILOMETER

CONTOUR INTERVAL 20 FEET  
DATUM IS MEAN SEA LEVEL

THIS MAP COMPLIES WITH NATIONAL MAP ACCURACY STANDARDS  
FOR SALE BY U. S. GEOLOGICAL SURVEY, WASHINGTON 25, D. C.

USGS  
Historical File  
Topographic Division

ROAD CLASSIFICATION  
HARD-SURFACE ALL WEATHER ROADS DRY WEATHER ROADS  
Heavy-duty. — 4 LANE LANE Improved dirt. —  
Medium-duty. — 4 LANE LANE Unimproved dirt. —  
Loose-surface, graded, or narrow hard-surface. —  
U. S. Route State Route

U. S. G. S.  
FILE COPY

GRANTSVILLE, MD.-PA.

N 3937.5—W 7907.5/7.5

PRINTED 1949 JAN 19 1948

3215