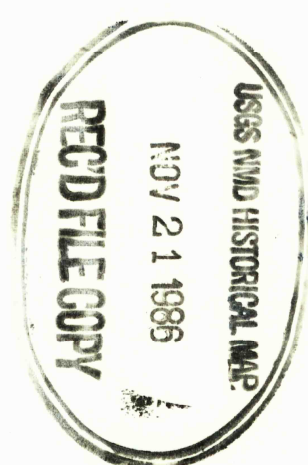
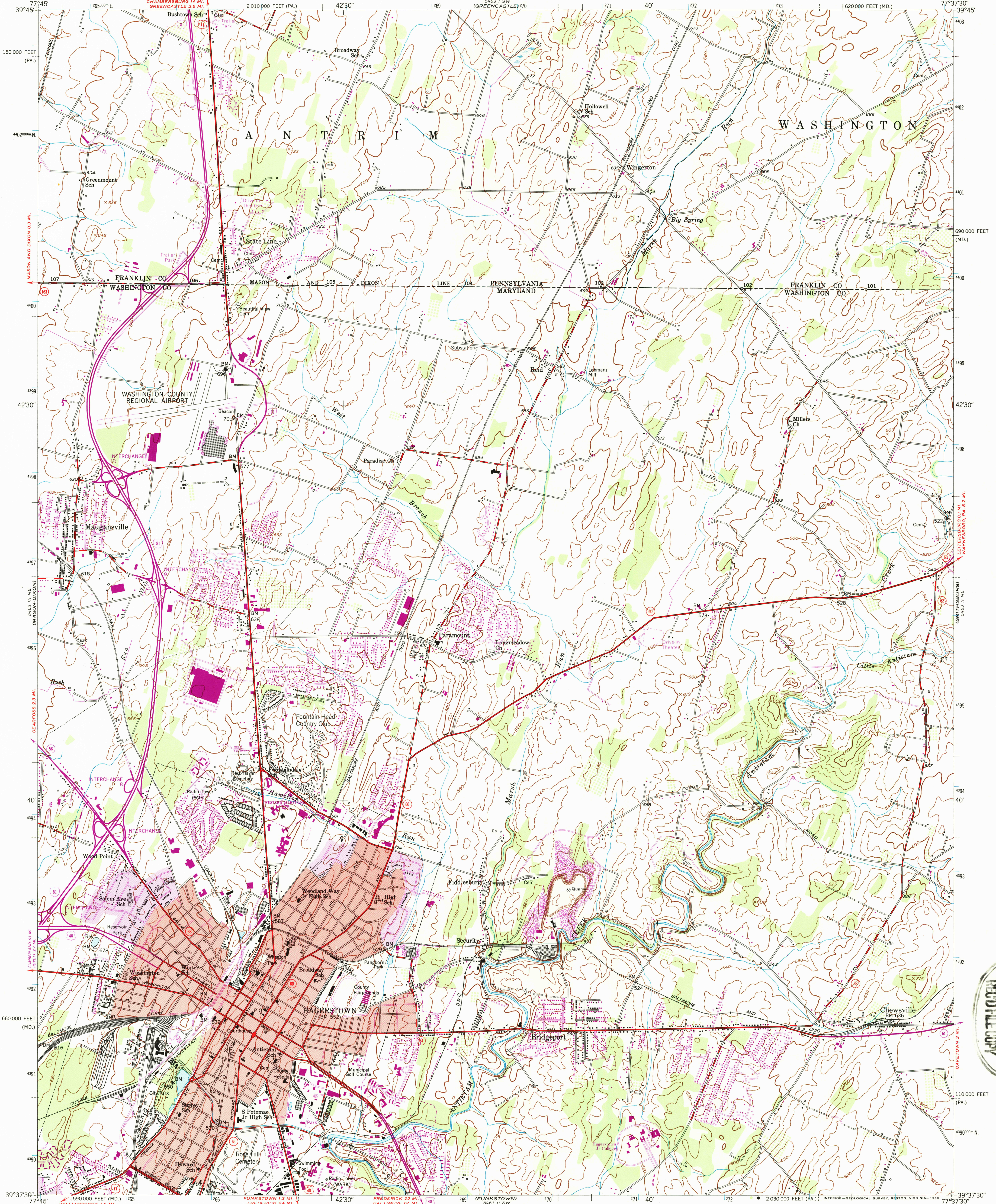


UNITED STATES
DEPARTMENT OF THE INTERIOR
GEOLOGICAL SURVEY

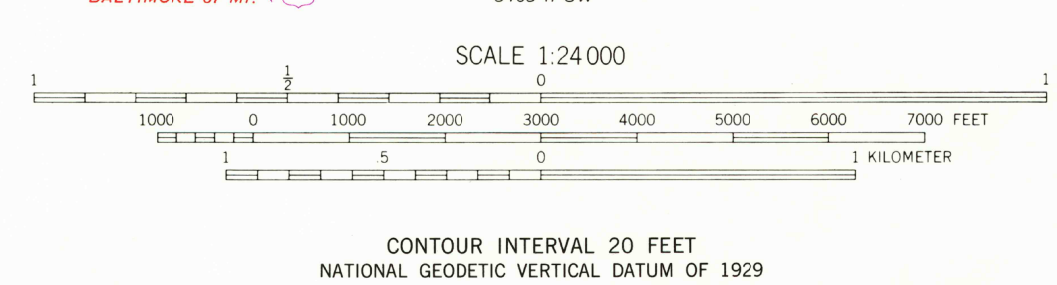
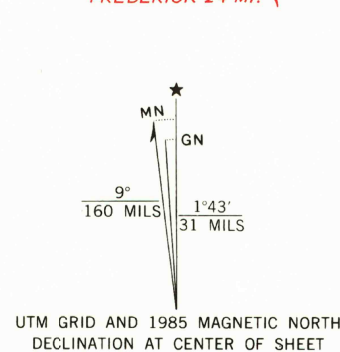
UNITED STATES
DEPARTMENT OF THE ARMY
CORPS OF ENGINEERS



HAGERSTOWN QUADRANGLE
MARYLAND - PENNSYLVANIA
7.5 MINUTE SERIES (TOPOGRAPHIC)



Maped by the Corps of Engineers, U. S. Army
Edited and published by the Geological Survey
Control by USGS, NOS/NOAA, and USCE
Topography by photogrammetric methods from aerial photographs
taken 1943. Culture revised by the Geological Survey 1953
Polyconic projection. 10,000-foot grid ticks based on Maryland
coordinate system and Pennsylvania coordinate system, south zone
1000-meter Universal Transverse Mercator grid ticks,
zone 18, shown in blue
1927 North American Datum
To place on the predicted North American Datum 1983
move the projection lines 7 meters south and
24 meters west as shown by dashed corner ticks
Red tint indicates areas in which only landmark buildings are shown
There may be private inholdings within the boundaries of
the National or State reservations shown on this map



ROAD CLASSIFICATION
Heavy-duty 4 LANE 15 LANE Light-duty
Medium-duty 4 LANE 15 LANE Unimproved dirt
U. S. Route Interstate Route
HAGERSTOWN, MD. - PA.
39077-F6-TF-024
1953
PHOTOREVISED 1985
DMA 5463 II NW - SERIES V833

Revisions shown in purple and woodlands compiled by the
Geological Survey from aerial photographs taken 1980 and
other sources. This information not field checked
Map edited 1985
Purple tint indicates extension of urban areas