

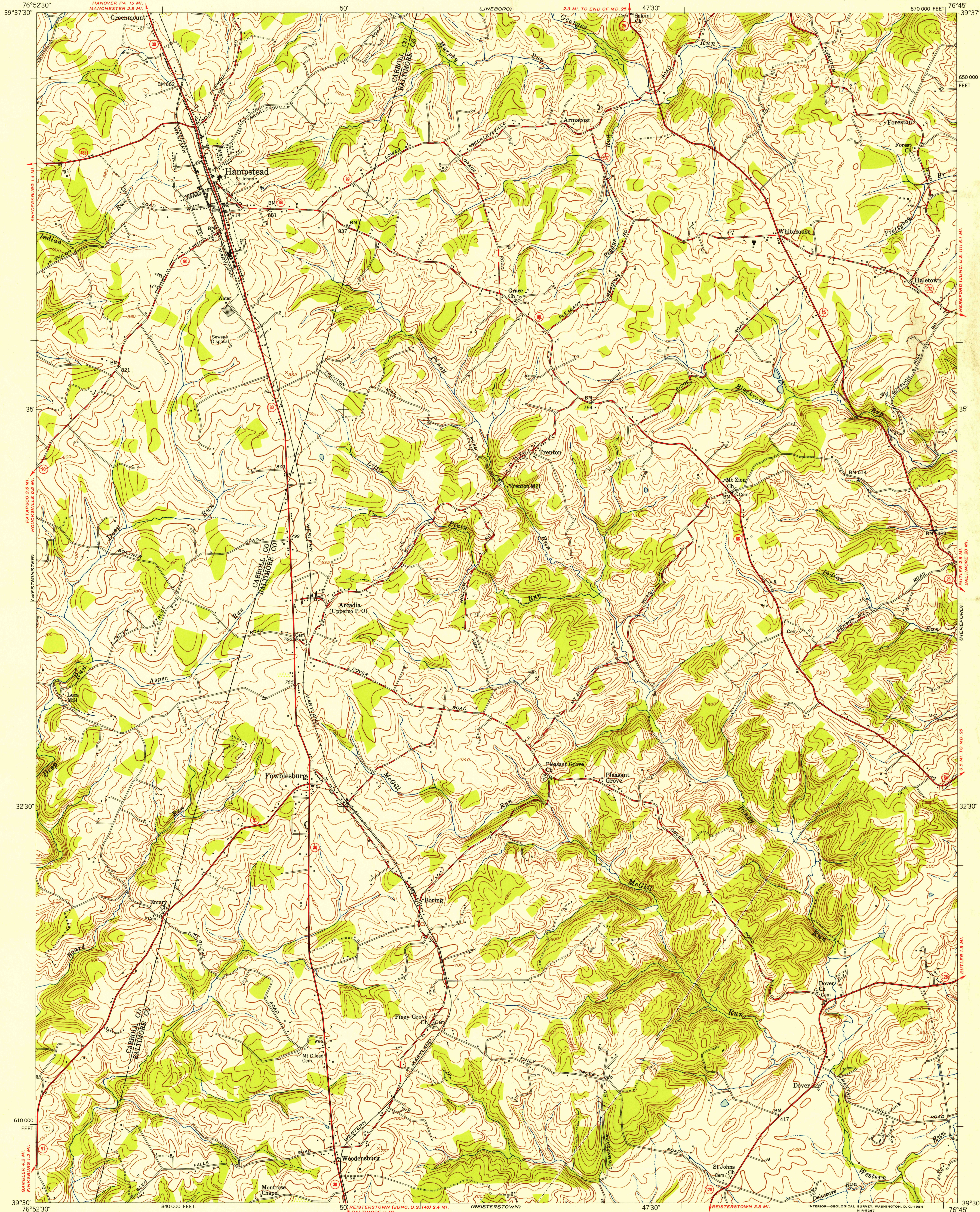
UNITED STATES
DEPARTMENT OF THE INTERIOR
GEOLOGICAL SURVEY

UNITED STATES
DEPARTMENT OF THE ARMY
CORPS OF ENGINEERS

U.S.G.S.
FILE COPY
TOPOGRAPHIC DIVISION

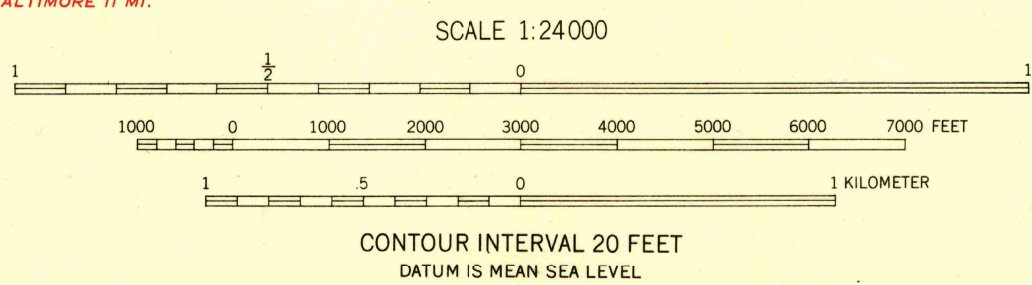
HAMPSTEAD QUADRANGLE
MARYLAND
7.5 MINUTE SERIES (TOPOGRAPHIC)
SE/4 WESTMINSTER 15' QUADRANGLE

NEW FREEDOM



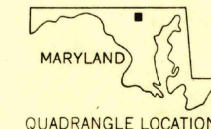
Mapped by the Army Map Service
Edited and published by the Geological Survey
Control by USGS, USC&GS, and USSCS
Topography from aerial photographs by stereophotogrammetric methods. Aerial photographs taken 1943. Field check 1944
Culture revised by the Geological Survey 1953 from aerial photographs taken 1952
Polyconic projection. 1927 North American datum
10,000-foot grid based on Maryland coordinate system

TRUE NORTH
MAGNETIC NORTH
APPROXIMATE MEAN
DECLINATION, 1953



USGS
Historical File
Topographic Division

ROAD CLASSIFICATION
Heavy-duty 4 LANE 16 LANE Light-duty
Medium-duty 4 LANE 16 LANE Unimproved dirt
U. S. Route State Route



U.S.G.S.
FILE COPY
TOPOGRAPHIC DIVISION
HAMPSTEAD, MD.
SE/4 WESTMINSTER 15' QUADRANGLE
N3930-W7645/7.5
1953

THIS MAP COMPLIES WITH NATIONAL MAP ACCURACY STANDARDS
FOR SALE BY U. S. GEOLOGICAL SURVEY, WASHINGTON 25, D. C.
A FOLDER DESCRIBING TOPOGRAPHIC MAPS AND SYMBOLS IS AVAILABLE ON REQUEST

NOV 10 1954
3175