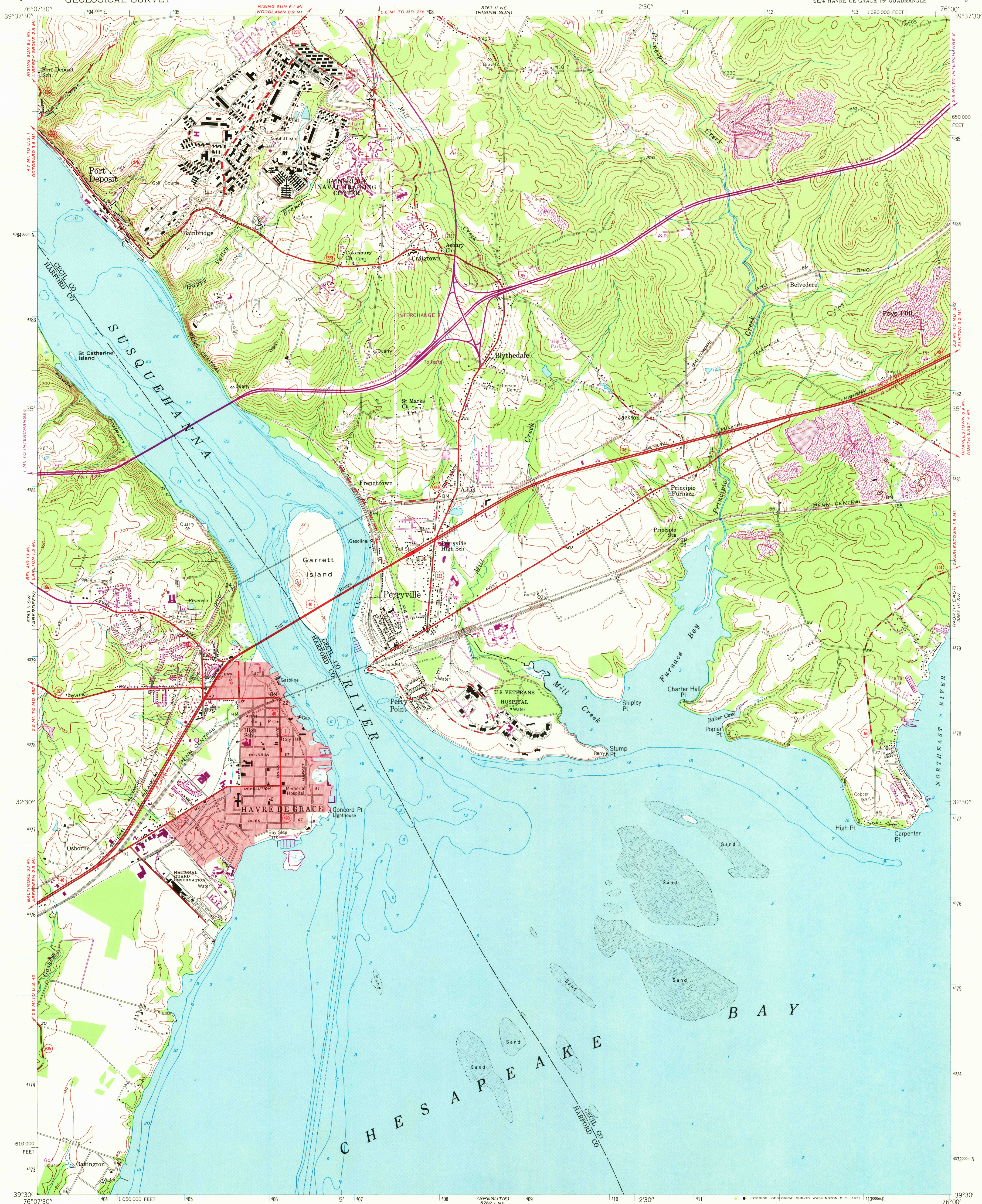


UNITED STATES
DEPARTMENT OF THE INTERIOR
GEOLOGICAL SURVEY

HAVRE DE GRACE QUADRANGLE
MARYLAND
7.5 MINUTE SERIES (TOPOGRAPHIC)
SE/4 HAVRE DE GRACE 15' QUADRANGLE



Mapped, edited, and published by the Geological Survey

Control by USGS and USC&GS

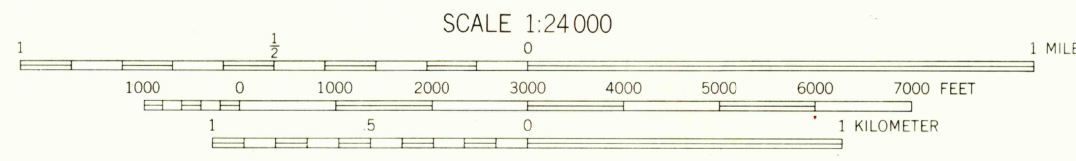
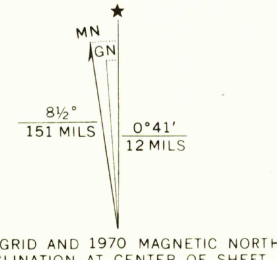
Culture and drainage in part compiled from aerial photographs taken 1952. Topography enlarged from 1:62,500 scale map of Havre de Grace quadrangle, 15 minute series. Original map by plane-table surveys 1939-1940. Revised 1953

Hydrography from USC&GS chart 572 dated 1947

Polyconic projection. 1927 North American datum 10,000-foot grid based on Maryland coordinate system

Red tint indicates area in which only landmark buildings are shown

1000-meter Universal Transverse Mercator grid ticks, zone 18, shown in blue



CONTOUR INTERVAL 20 FEET
DATUM IS MEAN SEA LEVEL
DEPTH CURVES AND SOUNDINGS IN FEET—DATUM IS MEAN LOW WATER
SHORELINE SHOWN REPRESENTS THE APPROXIMATE LINE OF MEAN HIGH WATER
THE MEAN RANGE OF TIDE IS 2 FEET



QUADRANGLE LOCATION

ROAD CLASSIFICATION
Heavy-duty 4 LANE 16 LANE Light-duty
Medium-duty 4 LANE 16 LANE Unimproved dirt
U.S. Route State Route

HAVRE DE GRACE, MD.
SE/4 HAVRE DE GRACE 15' QUADRANGLE
N 3930—W 7600/7.5

1953
PHOTOREVISED 1970
AMS 5763 II SE—SERIES V833

Revisions shown in purple compiled from aerial photographs taken 1970. This information not field checked

THIS MAP COMPLIES WITH NATIONAL MAP ACCURACY STANDARDS
FOR SALE BY U.S. GEOLOGICAL SURVEY, WASHINGTON, D.C. 20242
A FOLDER DESCRIBING TOPOGRAPHIC MAPS AND SYMBOLS IS AVAILABLE ON REQUEST

NOV 1 1971