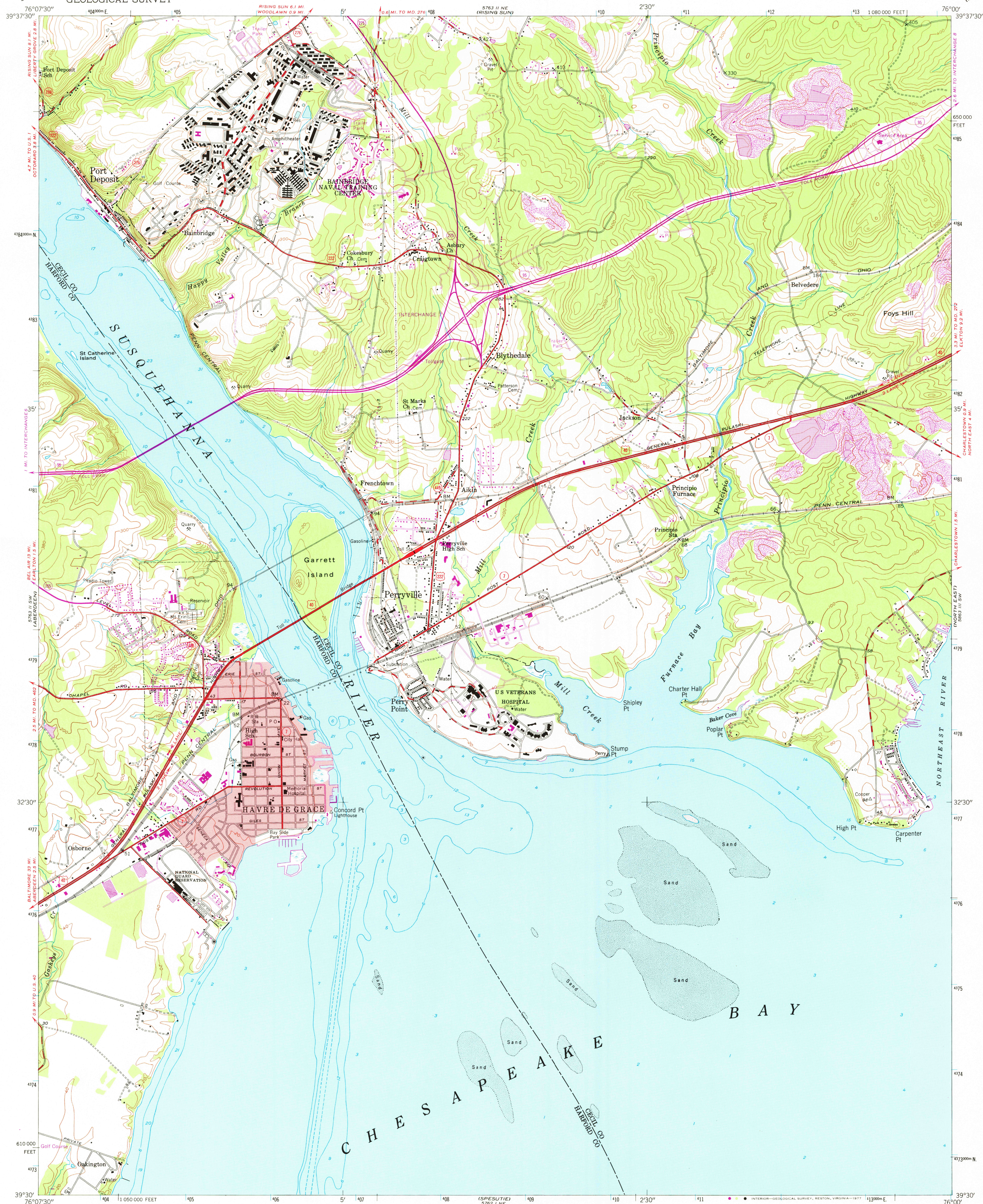


UNITED STATES
DEPARTMENT OF THE INTERIOR
GEOLOGICAL SURVEY

HAVRE DE GRACE QUADRANGLE
MARYLAND
7.5 MINUTE SERIES (TOPOGRAPHIC)



Mapped, edited, and published by the Geological Survey
Control by USGS and USC&GS

Culture and drainage in part compiled from aerial photographs
taken 1952. Topography enlarged from 1:62 500 scale map of
Havre de Grace quadrangle, 15 minute series. Original map by
plane-table surveys 1939-1940. Revised 1953

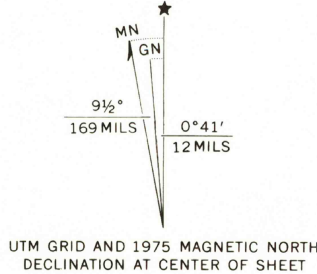
Hydrography from USC&GS chart 572 dated 1947

Polycyclic projection, 1927 North American datum
10,000-foot grid based on Maryland coordinate system

Red tint indicates area in which only
landmark buildings are shown

1000-meter Universal Transverse Mercator grid ticks,
zone 18, shown in blue

Revisions shown in purple compiled from aerial photographs
taken 1970 and 1975. This information not field checked



CONTOUR INTERVAL 20 FEET
NATIONAL GEODETIC VERTICAL DATUM OF 1929
DEPTH CURVES AND SOUNDINGS IN FEET-DATUM IS MEAN LOW WATER
SHORELINE SHOWN REPRESENTS THE APPROXIMATE LINE OF MEAN HIGH WATER
THE MEAN RANGE OF TIDE IS 2 FEET

THIS MAP COMPLIES WITH NATIONAL MAP ACCURACY STANDARDS.
FOR SALE BY U. S. GEOLOGICAL SURVEY, RESTON, VIRGINIA 22092
A FOLDER DESCRIBING TOPOGRAPHIC MAPS AND SYMBOLS IS AVAILABLE ON REQUEST

ROAD CLASSIFICATION
Primary highway, all weather, hard surface
Secondary highway, all weather, hard surface
Light-duty road, all weather, improved surface
Unimproved road, fair or dry weather
Interstate Route
U. S. Route
State Route



USGS
Historical File
Topographic Division

HAVRE DE GRACE, MD.

N3930-W7600/7.5

1953
PHOTOREVISED 1970 AND 1975
AMS 5763 II SE-SERIES V833

FEB 17 1978