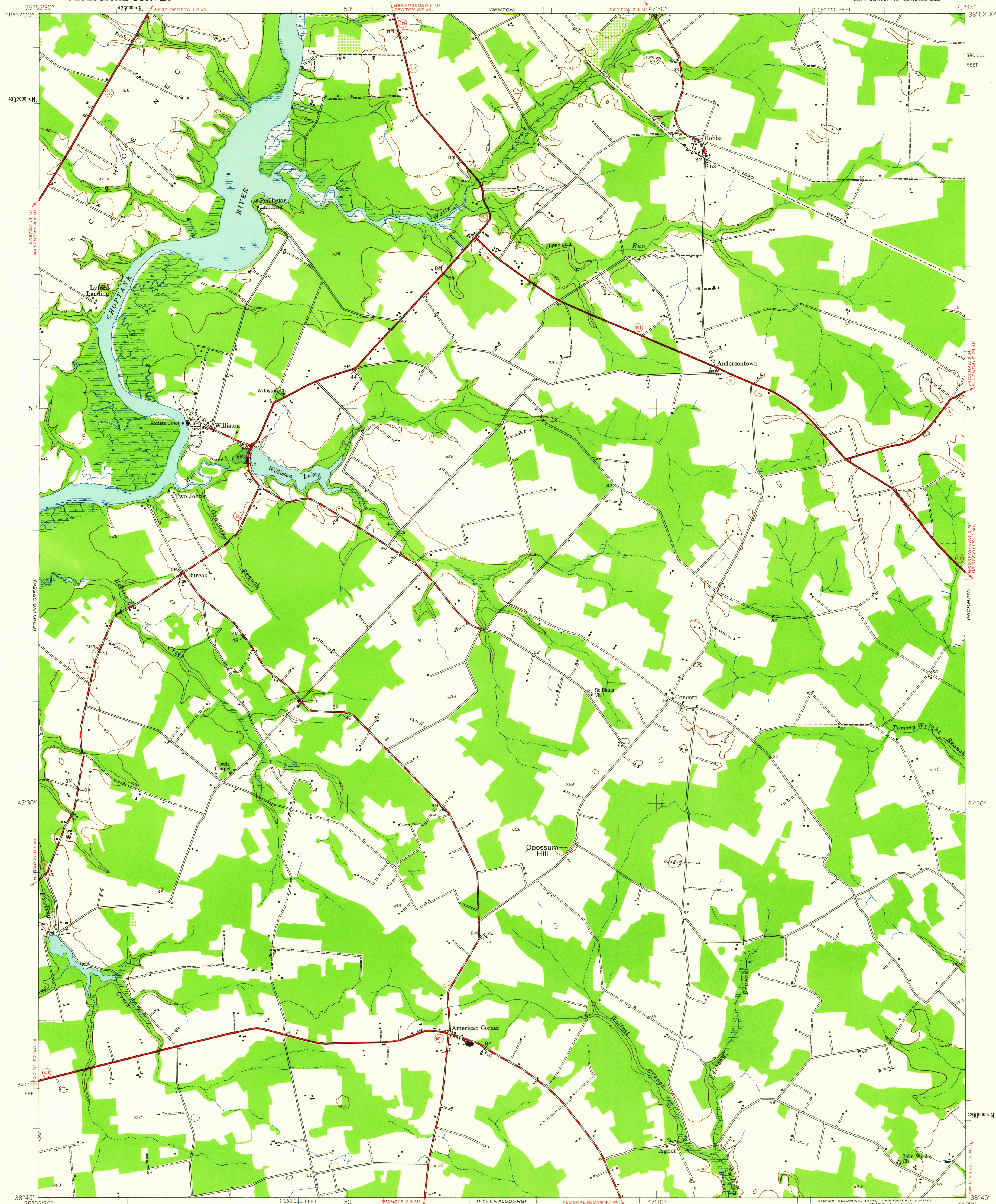


UNITED STATES  
DEPARTMENT OF THE INTERIOR  
GEOLOGICAL SURVEY

HOBBS QUADRANGLE  
MARYLAND-CAROLINE CO.  
7.5 MINUTE SERIES (TOPOGRAPHIC)  
SE 1/4 DENTON 15' QUADRANGLE



Mapped by the Army Map Service  
Published for civil use by the Geological Survey  
Control by USGS and USC&GS

Topography from aerial photographs by photogrammetric methods  
and by planetable surveys 1944. Aerial photographs taken 1942

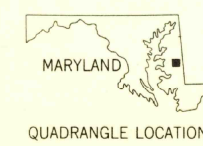
Polyconic projection. 1927 North American datum  
10,000-foot grid based on Maryland coordinate system  
1000-meter Universal Transverse Mercator grid ticks,  
zone 18, shown in blue

TRUE NORTH  
MAGNETIC NORTH  
APPROXIMATE MEAN  
DECLINATION, 1944

SCALE 1:24,000  
1 1000 0 1000 2000 3000 4000 5000 6000 7000 FEET  
1 5 10 15 20 KILOMETER  
CONTOUR INTERVAL 20 FEET  
DATUM IS MEAN SEA LEVEL

THIS MAP COMPLIES WITH NATIONAL MAP ACCURACY STANDARDS  
FOR SALE BY U.S. GEOLOGICAL SURVEY, WASHINGTON 25, D. C.  
A FOLDER DESCRIBING TOPOGRAPHIC MAPS AND SYMBOLS IS AVAILABLE ON REQUEST

USGS  
Historical File  
Topographic Division



ROAD CLASSIFICATION  
Heavy-duty ——— Light-duty ———  
Medium-duty ——— Unimproved dirt ———  
Slate Route ○

U.S.G.S.  
FILE COPY  
TOPOGRAPHIC DIVISION

HOBBS, MD.  
SE 1/4 DENTON 15' QUADRANGLE  
N3845-W7545/7.5  
1944

FEB 12 1962

2180