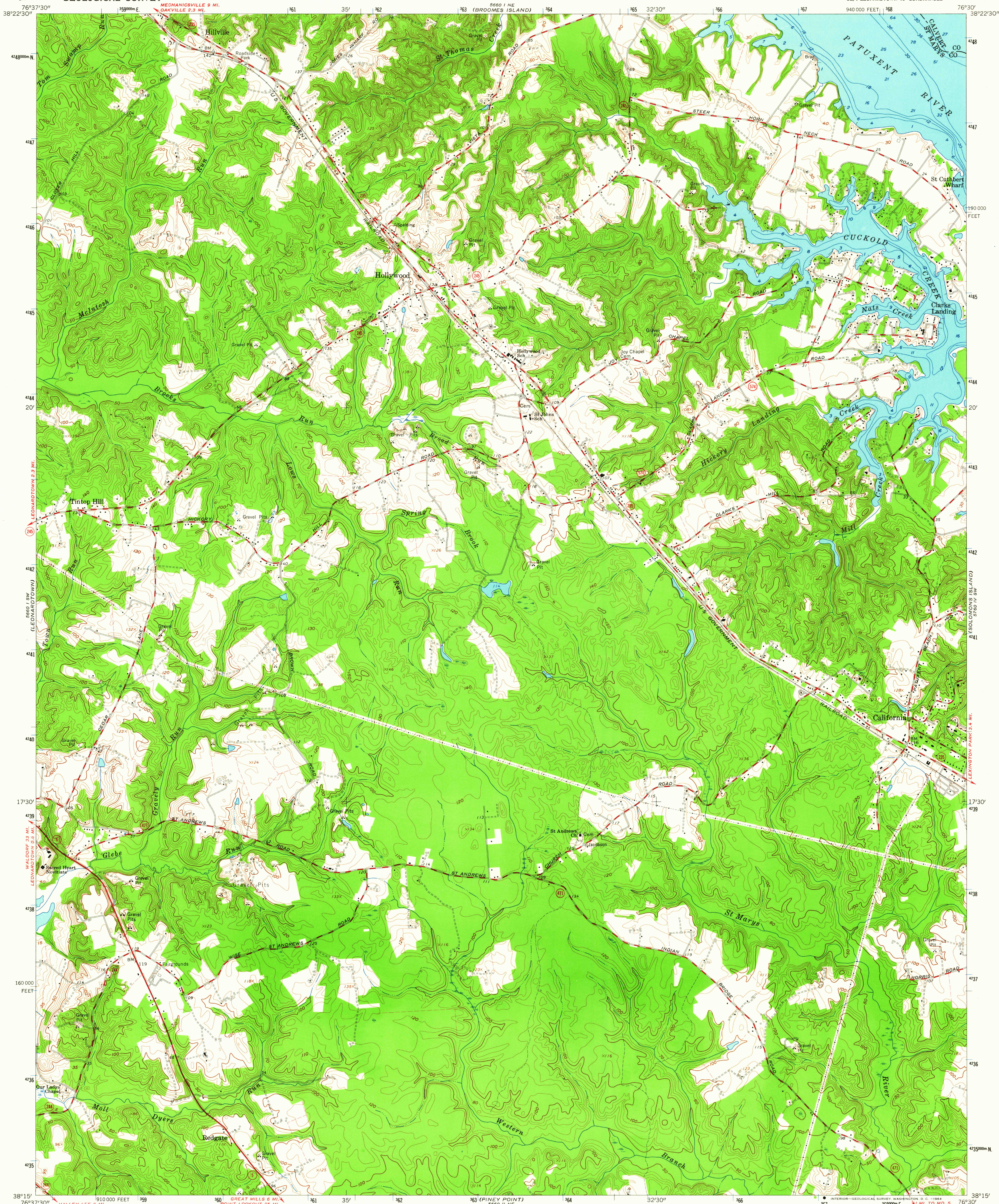
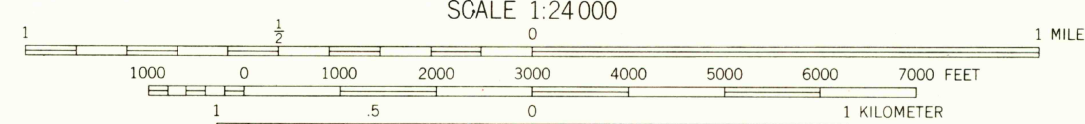
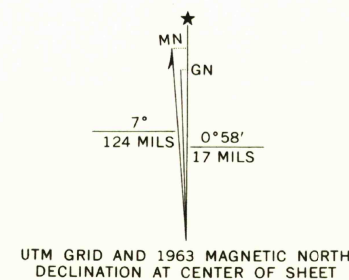


UNITED STATES
DEPARTMENT OF THE INTERIOR
GEOLOGICAL SURVEY

HOLLYWOOD QUADRANGLE
MARYLAND
7.5 MINUTE SERIES (TOPOGRAPHIC)
SE/4 LEONARDTOWN 15' QUADRANGLE



Maped, edited, and published by the Geological Survey
Control by USGS and USC&GS
Topography by photogrammetric methods from aerial
photographs taken 1961. Field checked 1963
Selected hydrographic data compiled from USC&GS Chart 553 (1962)
This information is not intended for navigational purposes
Polyconic projection. 1927 North American datum
10,000-foot grid based on Maryland coordinate system,
1000-meter Universal Transverse Mercator grid ticks,
zone 18, shown in blue
Fine red dashed lines indicate selected fence and field lines where
generally visible on aerial photographs. This information is unchecked



CONTOUR INTERVAL 10 FEET
DOTTED LINES REPRESENT 5-FOOT CONTOURS
DATUM IS MEAN SEA LEVEL
DEPTH CURVES AND SOUNDINGS IN FEET—DATUM IS MEAN LOW WATER
SHORELINE SHOWN REPRESENTS THE APPROXIMATE LINE OF MEAN HIGH WATER
THE MEAN RANGE OF TIDE IS APPROXIMATELY 1.3 FEET

THIS MAP COMPLIES WITH NATIONAL MAP ACCURACY STANDARDS
FOR SALE BY U.S. GEOLOGICAL SURVEY, WASHINGTON 25, D. C.
A FOLDER DESCRIBING TOPOGRAPHIC MAPS AND SYMBOLS IS AVAILABLE ON REQUEST

USGS
Historical File
Topographic Division



ROAD CLASSIFICATION
Heavy-duty —————
Medium-duty —————
Light-duty —————
Unimproved dirt - - - - -
State Route

HOLLYWOOD, MD.
SE/4 LEONARDTOWN 15' QUADRANGLE
N3815—W7630/7.5
1963

AMS 5660 I SE—SERIES V833

JUL 29 1964

3100