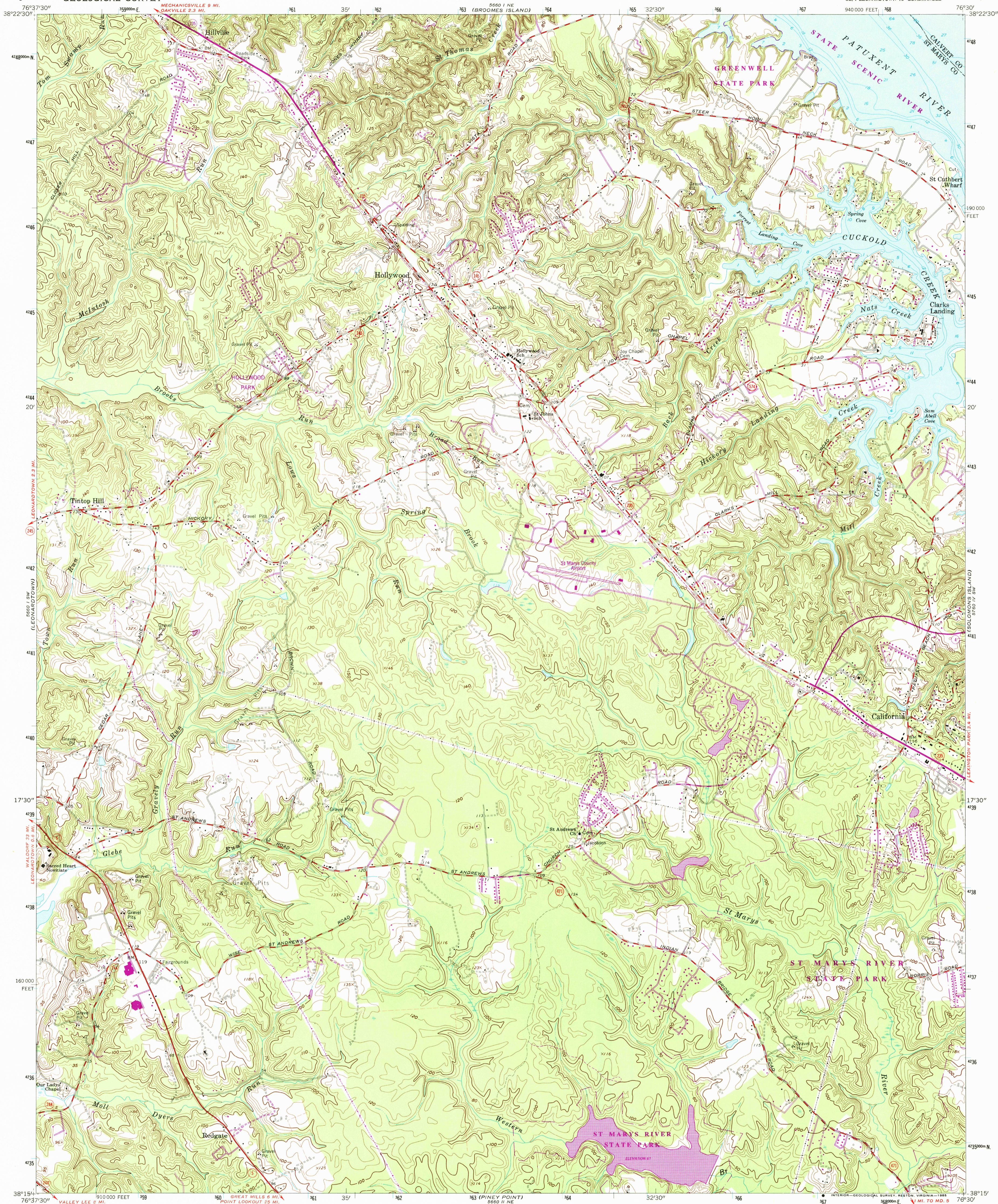


UNITED STATES
DEPARTMENT OF THE INTERIOR
GEOLOGICAL SURVEY

HOLLYWOOD QUADRANGLE
MARYLAND
7.5 MINUTE SERIES (TOPOGRAPHIC)
SE/4 LEONARDTOWN 15' QUADRANGLE



Mapped, edited, and published by the Geological Survey

Control by USGS and NOS/NOAA

Topography by photogrammetric methods from aerial

photographs taken 1961. Field checked 1963

Selected hydrographic data compiled from NOS chart 553 (1962)

This information is not intended for navigational purposes

Polyconic projection. 10,000-foot grid ticks based on Maryland

coordinate system

1000-meter Universal Transverse Mercator grid ticks, zone 18, shown in blue

1927 North American Datum

To place on the predicted North American Datum 1983

move the projection lines 9 meters south and

28 meters west as shown by dashed corner ticks

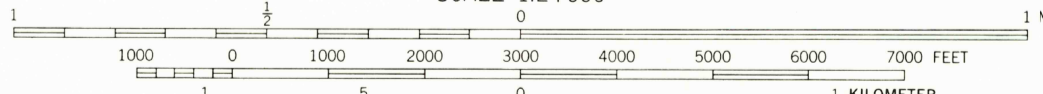
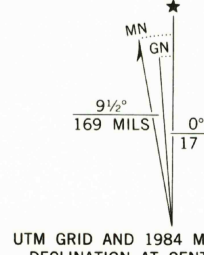
Fine red dashed lines indicate selected fence and field lines where

generally visible on aerial photographs. This information is unchecked

There may be private inholdings within the boundaries of

the National or State reservations shown on this map

Revisions shown in purple and woodland compiled from
aerial photographs taken 1981 and other sources. This
information not field checked. Map edited 1984



CONTOUR INTERVAL 10 FEET
SUPPLEMENTARY CONTOUR INTERVAL 5 FEET
NATIONAL GEODETIC VERTICAL DATUM OF 1929
DEPTH CURVES AND SOUNDINGS IN FEET—DATUM IS MEAN LOW WATER
THE RELATIONSHIP BETWEEN THE TWO DATUMS IS VARIABLE
SHORELINE SHOWN REPRESENTS THE APPROXIMATE LINE OF MEAN HIGH WATER
THE MEAN RANGE OF TIDE IS APPROXIMATELY 1.2 FEET
THIS MAP COMPLIES WITH NATIONAL MAP ACCURACY STANDARDS
FOR SALE BY U.S. GEOLOGICAL SURVEY, RESTON, VIRGINIA 22092
A FOLDER DESCRIBING TOPOGRAPHIC MAPS AND SYMBOLS IS AVAILABLE ON REQUEST



ROAD CLASSIFICATION
Heavy-duty ——— Light-duty ———
Medium-duty ——— Unimproved dirt ———
State Route

HOLLYWOOD, MD.
SE/4 LEONARDTOWN 15' QUADRANGLE
38076-C5-TF-024

1963
PHOTOREVISED 1984
DMA 5660 1 SE—SERIES V833