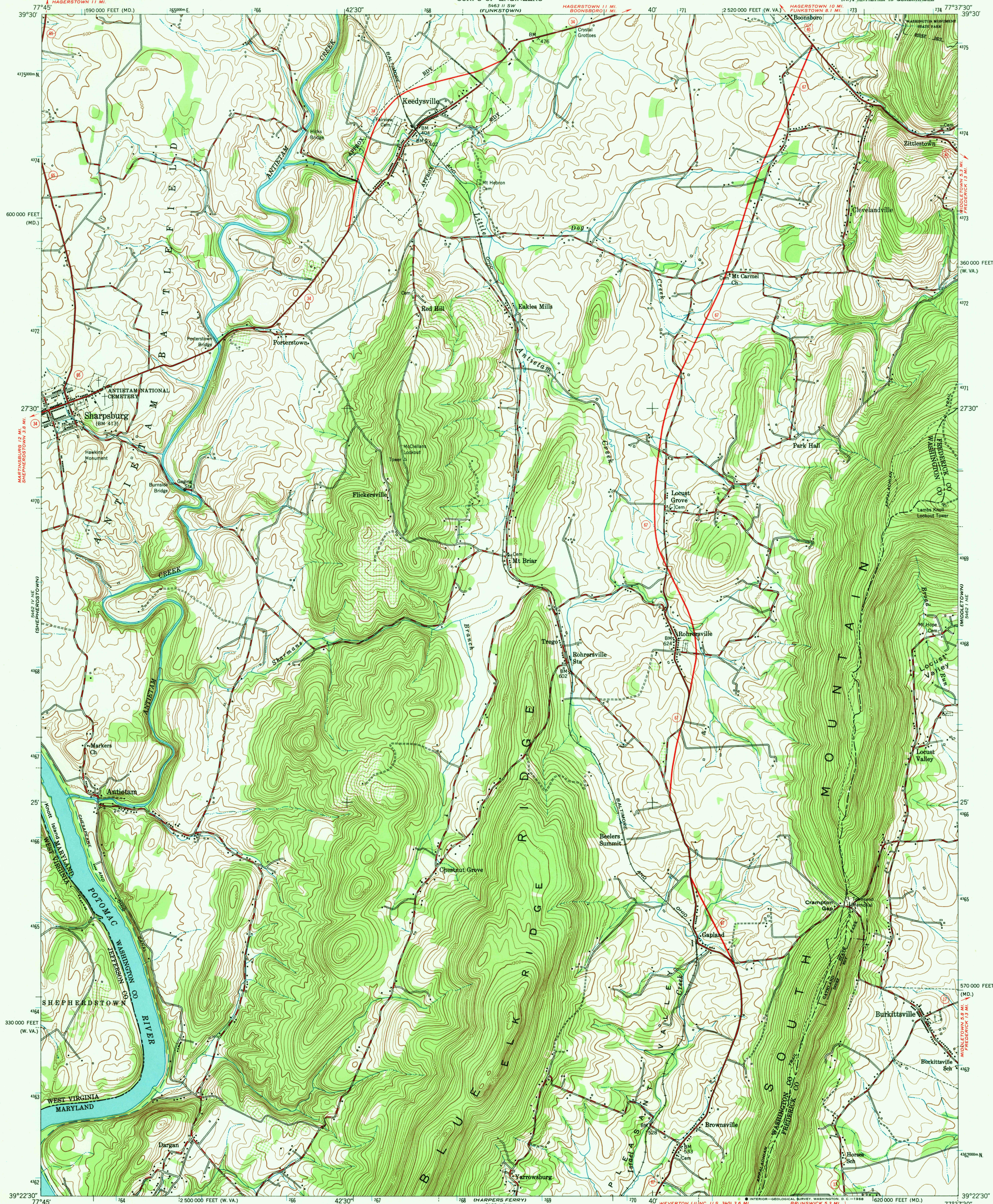


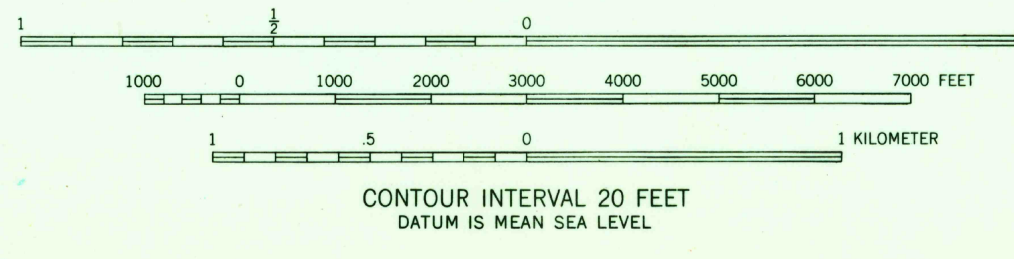
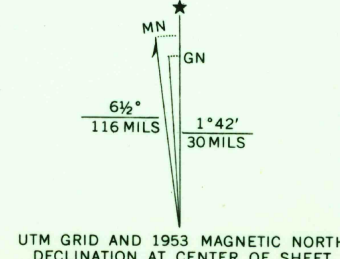
UNITED STATES
DEPARTMENT OF THE INTERIOR
GEOLOGICAL SURVEY

UNITED STATES
DEPARTMENT OF THE ARMY
CORPS OF ENGINEERS

KEEDYSVILLE QUADRANGLE
MARYLAND—WEST VIRGINIA
7.5 MINUTE SERIES (TOPOGRAPHIC)
NW/4 ANTIETAM 15' QUADRANGLE



Mapped by the Corps of Engineers, U. S. Army
Edited and published by the Geological Survey
Control by USGS, USC&GS, USFS, and USSCS
Topography from aerial photographs by stereophotogrammetric
methods. Aerial photographs taken 1943
Culture revised by the Geological Survey 1953
Polyconic projection. 1927 North American datum
10,000-foot grids based on Maryland coordinate system
and West Virginia coordinate system, north zone
1000-meter Universal Transverse Mercator grid ticks,
zone 18, shown in blue



USGS
Historical File
Topographic Division



ROAD CLASSIFICATION
Heavy-duty ——— Light-duty ———
Medium-duty ——— Unimproved dirt ———
U. S. Route ——— State Route ———

KEEDYSVILLE, MD.—W. VA.
NW/4 ANTIETAM 15' QUADRANGLE
N3922.5—W7737.5/7.5

U.S.G.S.
FILE COPY
TOPOGRAPHIC DIVISION

1953
AMS 5462 I NW—SERIES V833

THIS MAP COMPLIES WITH NATIONAL MAP ACCURACY STANDARDS
FOR SALE BY U. S. GEOLOGICAL SURVEY, WASHINGTON, D. C. 20242
A FOLDER DESCRIBING TOPOGRAPHIC MAPS AND SYMBOLS IS AVAILABLE ON REQUEST

5845
OCT 17 1968