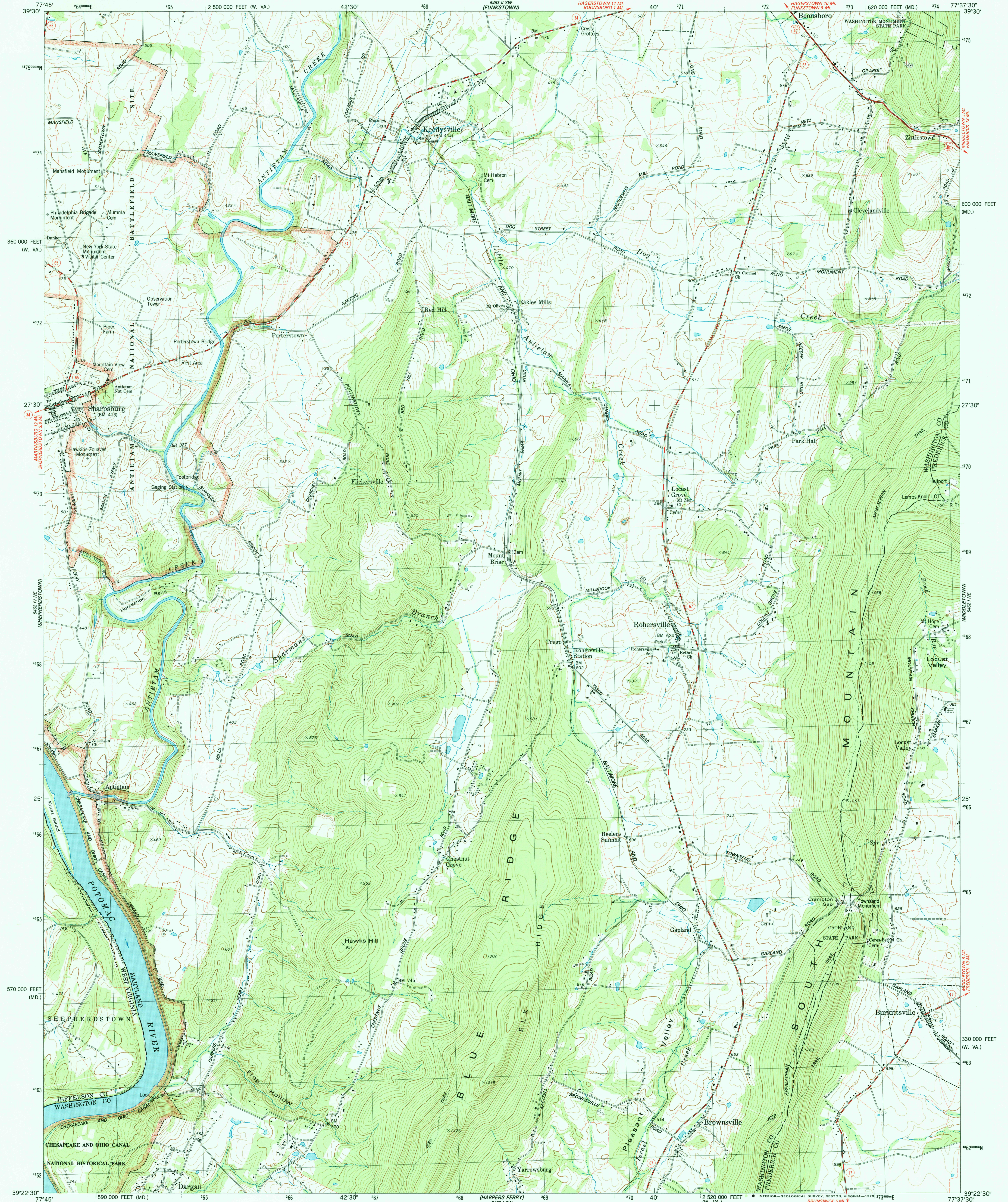
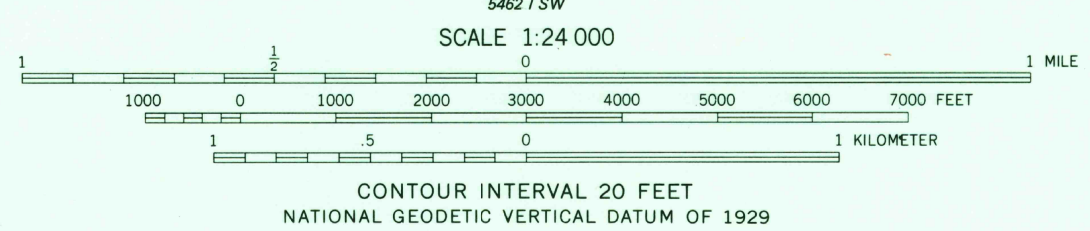
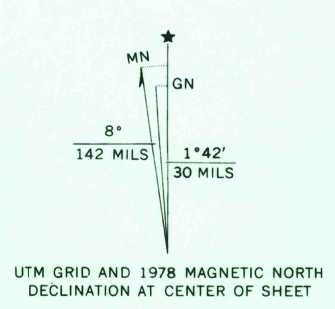


UNITED STATES  
DEPARTMENT OF THE INTERIOR  
GEOLOGICAL SURVEY

KEEDYSVILLE QUADRANGLE  
MARYLAND—WEST VIRGINIA  
7.5 MINUTE SERIES (TOPOGRAPHIC)  
NW/4 ANTIETAM 15' QUADRANGLE



Mapped, edited, and published by the Geological Survey in cooperation with State of West Virginia agencies  
Control by USGS and NOS/NOAA  
Topography by photogrammetric methods from aerial photographs taken 1974. Field checked 1974  
Supersedes map dated 1971. Map edited 1978  
Projection: Maryland coordinate system (Lambert conformal conic)  
10,000-foot grid ticks based on Maryland coordinate system and West Virginia coordinate system, north zone 1000-meter Universal Transverse Mercator grid, zone 18 1927 North American datum  
Fine red dashed lines indicate selected fence and field lines where generally visible on aerial photographs. This information is unchecked  
There may be private inholdings within the boundaries of the National or State reservations shown on this map



ROAD CLASSIFICATION

Primary highway, hard surface	Light-duty road, hard or improved surface
Secondary highway, hard surface	Unimproved road
Interstate Route	U. S. Route
	State Route

KEEDYSVILLE, MD.—W. VA.  
NW/4 ANTIETAM 15' QUADRANGLE  
N3922.5—W7737.5/7.5  
1978  
AMS 5462 1 NW—SERIES V833

THIS MAP COMPLIES WITH NATIONAL MAP ACCURACY STANDARDS FOR SALE BY U. S. GEOLOGICAL SURVEY, RESTON, VIRGINIA 22092  
A FOLDER DESCRIBING TOPOGRAPHIC MAPS AND SYMBOLS IS AVAILABLE ON REQUEST

USGS MMP HISTORICAL MAP  
REC'D FILE COPY