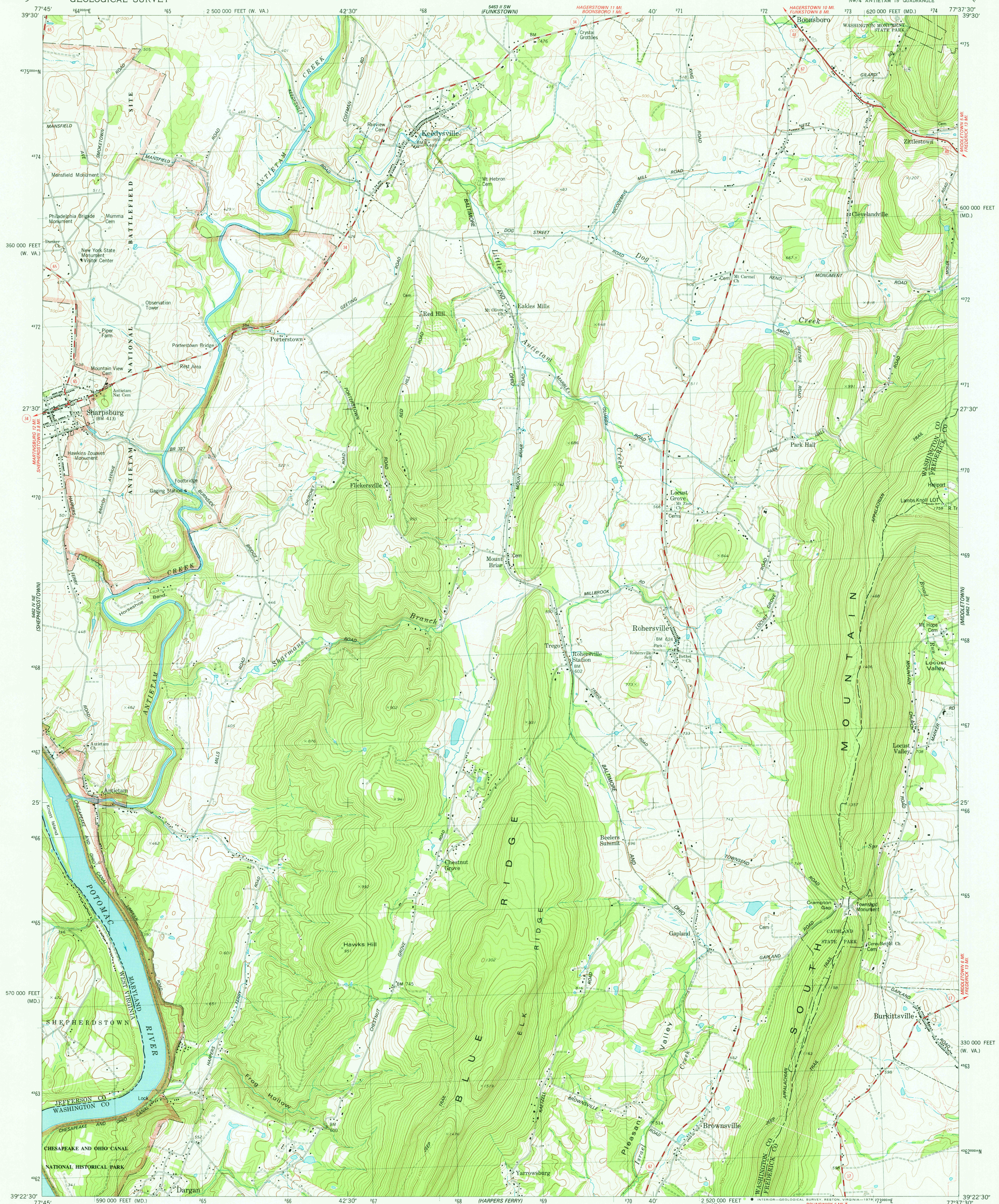


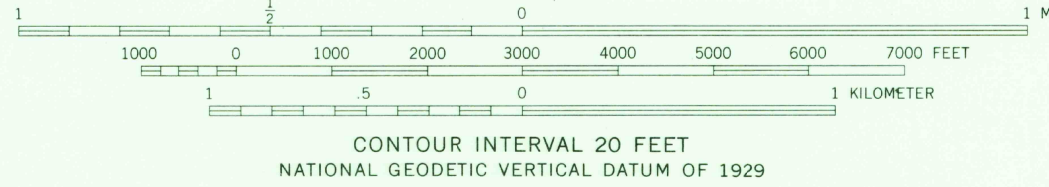
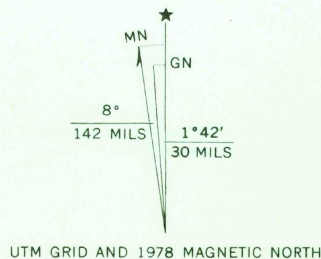
UNITED STATES
DEPARTMENT OF THE INTERIOR
GEOLOGICAL SURVEY



KEEDYSVILLE QUADRANGLE
MARYLAND—WEST VIRGINIA
7.5 MINUTE SERIES (TOPOGRAPHIC)



Mapped, edited, and published by the Geological Survey
in cooperation with State of West Virginia agencies
Control by USGS and NOS/NOAA
Topography by photogrammetric methods from aerial
photographs taken 1974. Field checked 1974
Supersedes map dated 1971. Map edited 1978
Projection: Maryland coordinate system
(Lambert conformal conic)
10,000-foot grid ticks based on Maryland coordinate
system and West Virginia coordinate system, north zone
1000-meter Universal Transverse Mercator grid, zone 18
1927 North American datum
Fine red dashed lines indicate selected fence and field lines where
generally visible on aerial photographs. This information is unchecked
There may be private inholdings within the boundaries of
the National or State reservations shown on this map



THIS MAP COMPLIES WITH NATIONAL MAP ACCURACY STANDARDS
FOR SALE BY U. S. GEOLOGICAL SURVEY, RESTON, VIRGINIA 22092
A FOLDER DESCRIBING TOPOGRAPHIC MAPS AND SYMBOLS IS AVAILABLE ON REQUEST



ROAD CLASSIFICATION
Primary highway, hard surface
Secondary highway, hard surface
Light-duty road, hard or improved surface
Unimproved road
Interstate Route
U. S. Route
State Route

KEEDYSVILLE, MD.—W. VA.
N744 ANTETAM 15' QUADRANGLE
N3922.5—W7737.5/7.5

USGS
Historical File
Topographic Division

1978
AMS 5482 I NW—SERIES V833

APR 11 1978