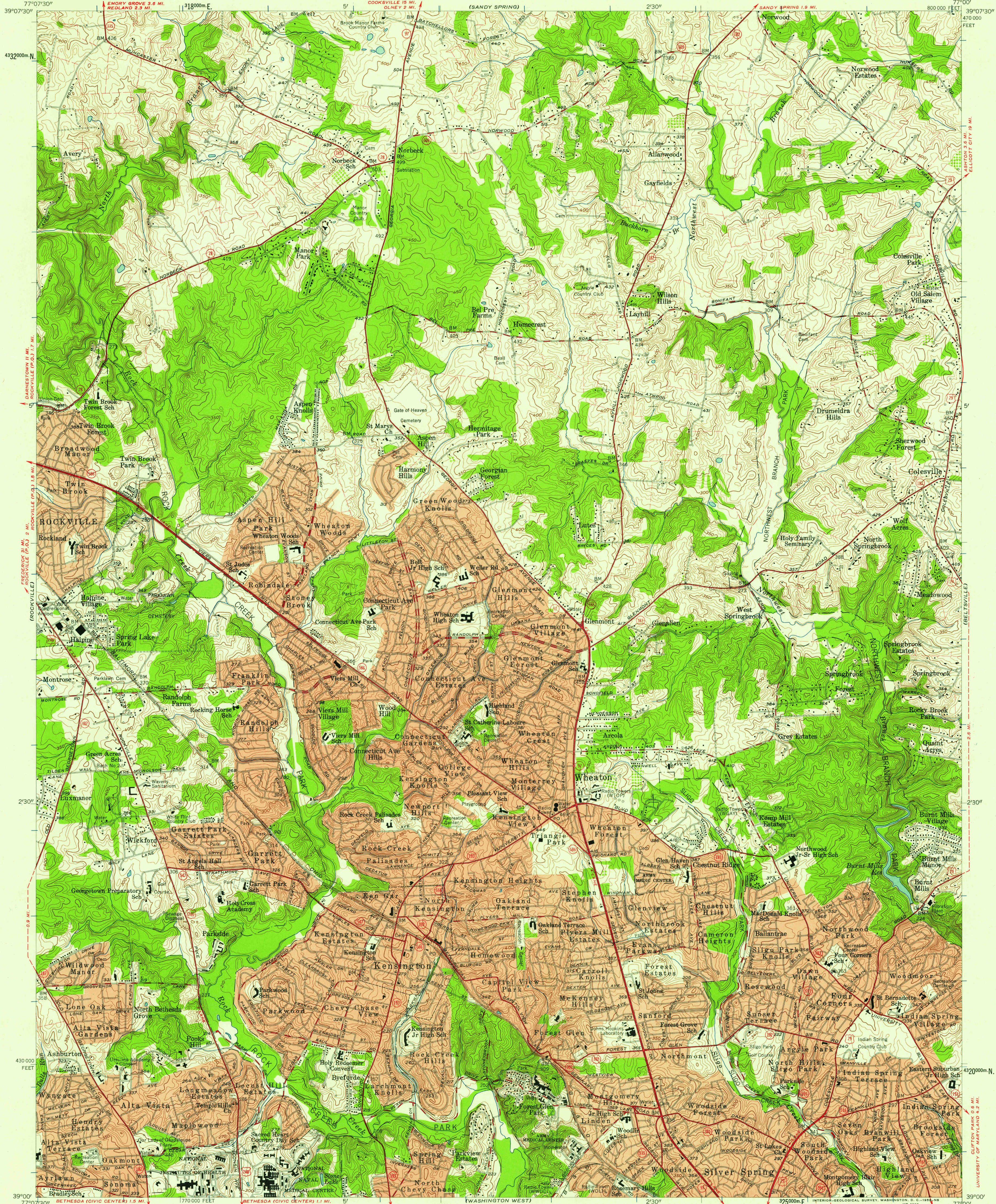
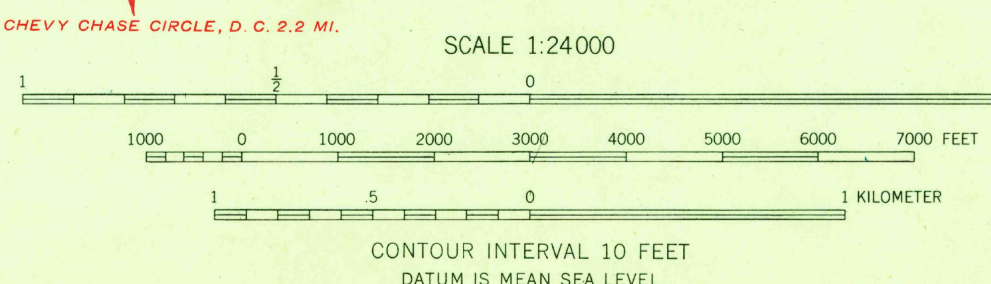


UNITED STATES
DEPARTMENT OF THE INTERIOR
GEOLOGICAL SURVEY

KENSINGTON QUADRANGLE
MARYLAND—MONTGOMERY CO.
7.5 MINUTE SERIES (TOPOGRAPHIC)
SE/4 ROCKVILLE 15' QUADRANGLE



Mapped, edited, and published by the Geological Survey
Control by USGS, USC&GS, and WSSC
Topography from aerial photographs by stereoplotting
Aerial photographs taken 1955. Field check 1956
Polyconic projection. 1927 North American datum
10,000-foot grid based on Maryland coordinate system
1000-meter Universal Transverse Mercator grid ticks,
zone 18, shown in blue
Fine red dashed lines indicate selected fence and field lines
visible on aerial photographs. This information is unchecked
Red tint indicates areas in which only
landmark buildings are shown
Park areas shown include those in process of acquisition



USGS
Historical File
Topographic Division
ROAD CLASSIFICATION
Heavy-duty ——— Light-duty ———
Medium-duty ——— Unimproved dirt ———
U.S. Route ——— State Route ———
U.S.G.S.
FILE COPY
TOPOGRAPHIC DIVISION
KENSINGTON, MD.
SE/4 ROCKVILLE 15' QUADRANGLE
N 3900—W 7700/7.5
1956

THIS MAP COMPLIES WITH NATIONAL MAP ACCURACY STANDARDS
FOR SALE BY U. S. GEOLOGICAL SURVEY, WASHINGTON 25, D. C.
A FOLDER DESCRIBING TOPOGRAPHIC MAPS AND SYMBOLS IS AVAILABLE ON REQUEST

4890