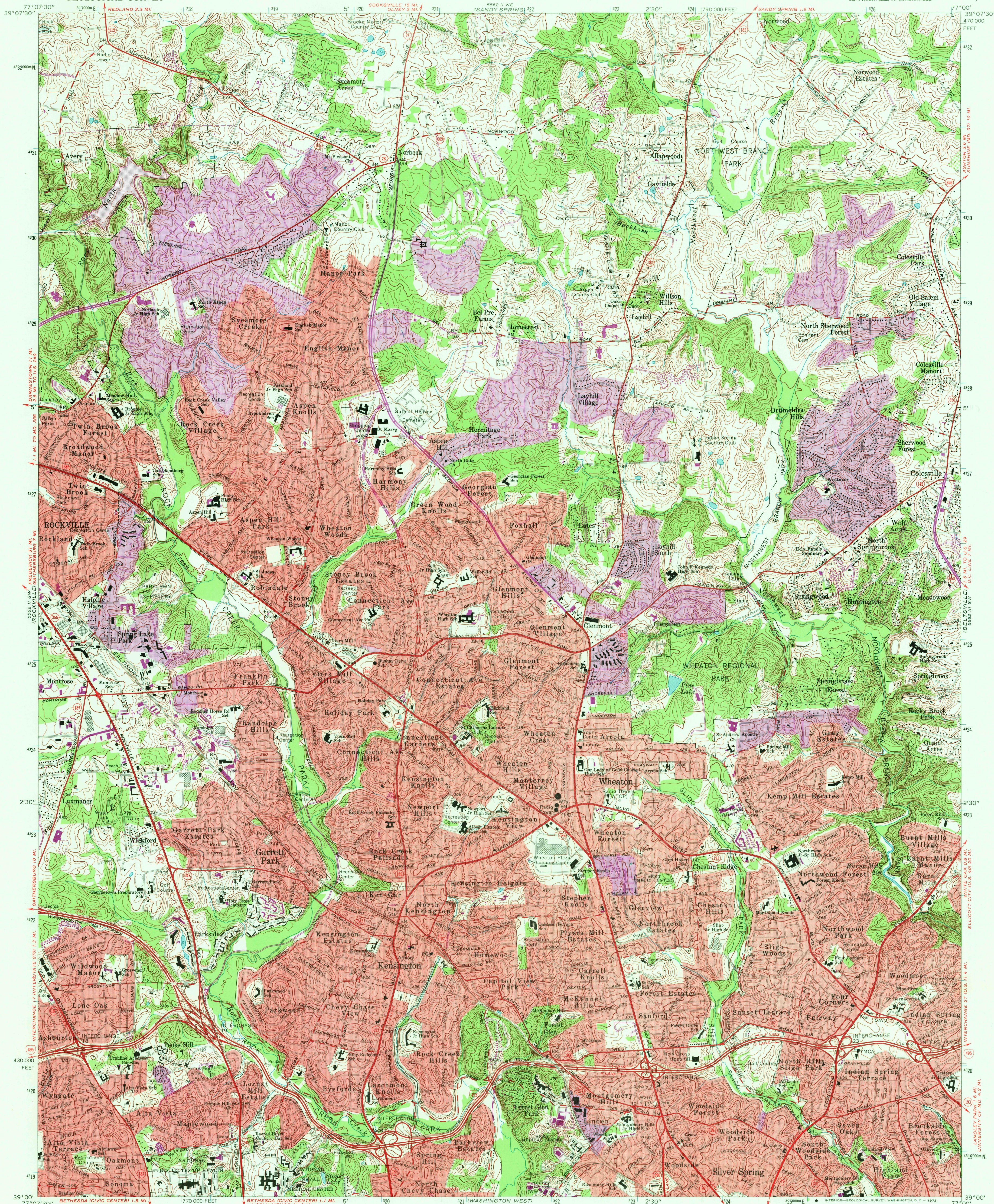


UNITED STATES
DEPARTMENT OF THE INTERIOR
GEOLOGICAL SURVEY

KENSINGTON QUADRANGLE
MARYLAND—MONTGOMERY CO.
7.5 MINUTE SERIES (TOPOGRAPHIC)
SE/4 ROCKVILLE 15' QUADRANGLE

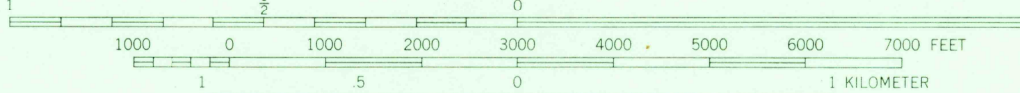
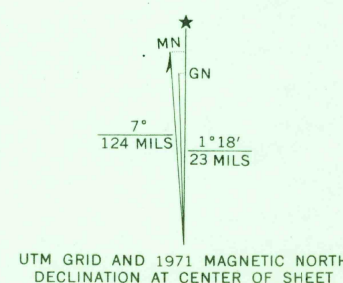


Mapped, edited, and published by the Geological Survey
Control by USGS, USC&GS, and WSSC

Topography by photogrammetric methods from aerial photographs
taken 1955. Field checked 1956. Revised 1965

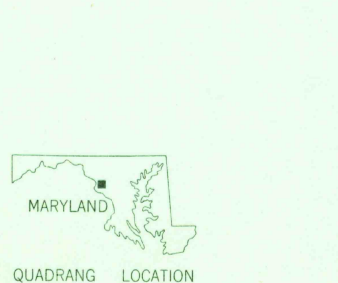
Polyconic projection. 1927 North American datum
10,000-foot grid based on Maryland coordinate system
1000-meter Universal Transverse Mercator grid ticks,
zone 18, shown in blue

Fine red dashed lines indicate selected fence and field lines where
generally visible on aerial photographs. This information is unchecked
Red tint indicates areas in which only landmark buildings are shown
Area covered by dashed light-blue pattern
is subject to controlled inundation to 351 feet



CONTOUR INTERVAL 10 FEET
DATUM IS MEAN SEA LEVEL

THIS MAP COMPLIES WITH NATIONAL MAP ACCURACY STANDARDS
FOR SALE BY U. S. GEOLOGICAL SURVEY, WASHINGTON, D. C. 20242
A FOLDER DESCRIBING TOPOGRAPHIC MAPS AND SYMBOLS IS AVAILABLE ON REQUEST



ROAD CLASSIFICATION
Heavy-duty ——— Light-duty ———
Medium-duty ——— Unimproved dirt ———
Interstate Route U.S. Route State Route

KENSINGTON, MD.
SE/4 ROCKVILLE 15' QUADRANGLE
N3900—W7700/7.5

1965
PHOTOREVISED 1971
AMS 5562 II SE—SERIES V833

Revisions shown in purple compiled from aerial photographs
taken 1971. This information not field checked
Purple tint indicates extension of urban areas

8650

JAN 17 1972

USGS
HISTORICAL FILE
TOPOGRAPHIC DIVISION