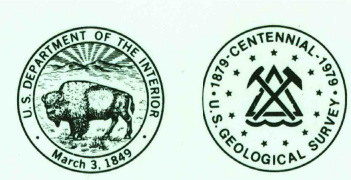
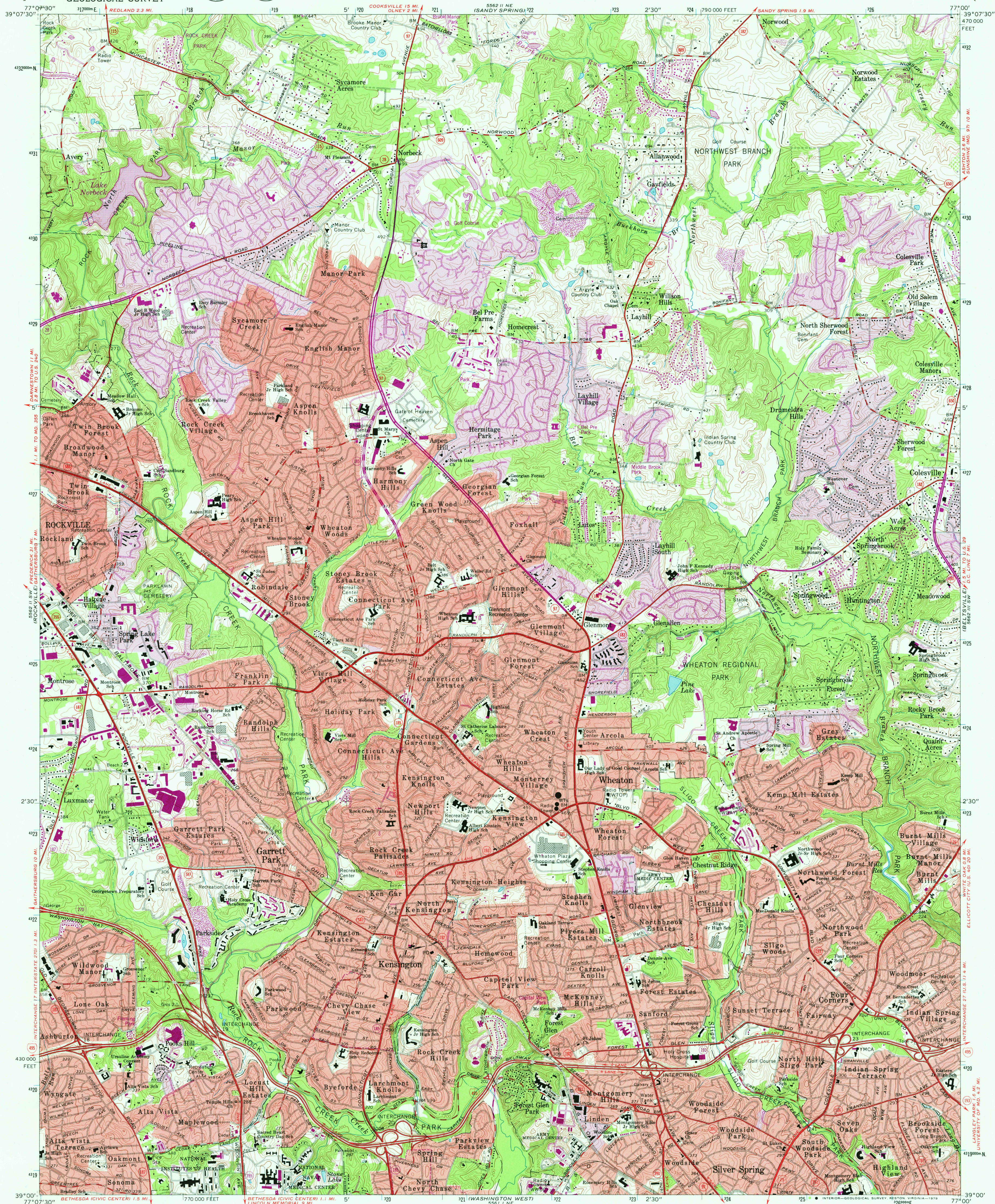


UNITED STATES  
DEPARTMENT OF THE INTERIOR  
GEOLOGICAL SURVEY



KENSINGTON QUADRANGLE  
MARYLAND—MONTGOMERY CO.  
7.5 MINUTE SERIES (TOPOGRAPHIC)



Maped, edited, and published by the Geological Survey

Control by USGS, USC&GS, and WSSC  
Topography by photogrammetric methods from aerial photographs  
taken 1955. Field checked 1956. Revised 1965  
Polyconic projection. 1927 North American datum  
10,000-foot grid based on Maryland coordinate system  
1000-meter Universal Transverse Mercator grid ticks,  
zone 18, shown in blue  
To place on the predicted North American Datum 1983  
move the projection lines 8 meters south and  
26 meters west as shown by dashed corner ticks  
There may be private inholdings within the boundaries of  
the National or State reservations shown on this map  
Fine red dashed lines indicate selected fence and field lines where  
generally visible on aerial photographs. This information is unchecked  
Red tint indicates areas in which only landmark buildings are shown

UTM GRID AND 1979 MAGNETIC NORTH  
DECLINATION AT CENTER OF SHEET  
Areas covered by dashed light-blue pattern  
are subject to controlled inundation to 351 feet

SCALE 1:24,000  
CONTOUR INTERVAL 10 FEET  
NATIONAL GEODETIC VERTICAL DATUM OF 1929  
THIS MAP COMPLIES WITH NATIONAL MAP ACCURACY STANDARDS  
FOR SALE BY U.S. GEOLOGICAL SURVEY, RESTON, VIRGINIA 22092  
A FOLDER DESCRIBING TOPOGRAPHIC MAPS AND SYMBOLS IS AVAILABLE ON REQUEST

ROAD CLASSIFICATION  
Heavy-duty ——— Light-duty ———  
Medium-duty ——— Unimproved dirt ———  
Interstate Route ——— U.S. Route ——— State Route ———

USGS  
Historical File  
Topographic Division  
KENSINGTON, MD.  
N3900—W7700/7.5

1965  
PHOTOREVISED 1979  
DMA 5362 II SE—SERIES V833  
Boundary lines shown in purple compiled from latest  
information available from the controlling authority  
Purple tint indicates extension of urban areas  
Revisions shown in purple and woodland compiled from aerial photographs  
taken 1977 and other source data. This information not  
field checked. Map edited 1979

MAY 20 1980

3776