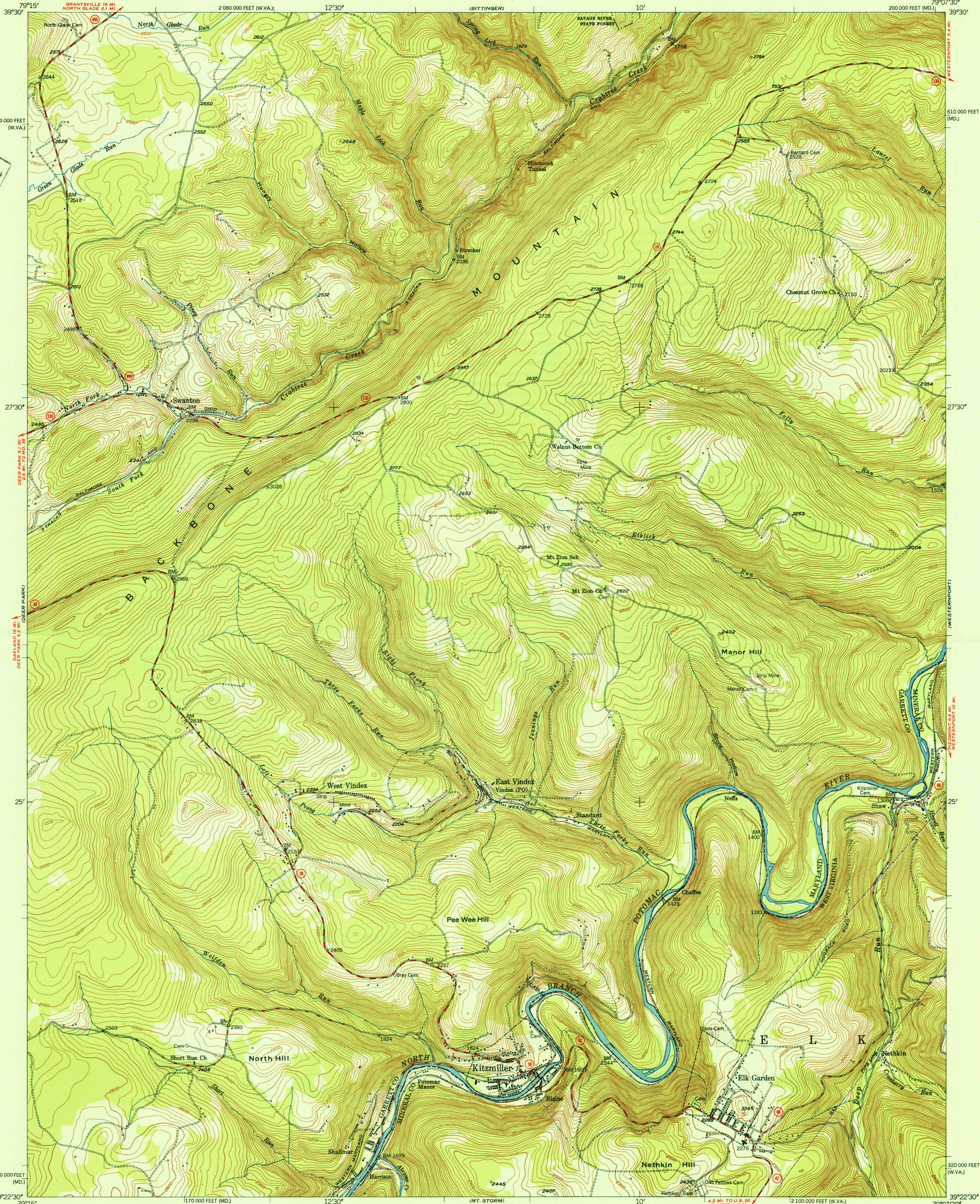


UNITED STATES
DEPARTMENT OF THE INTERIOR
GEOLOGICAL SURVEY

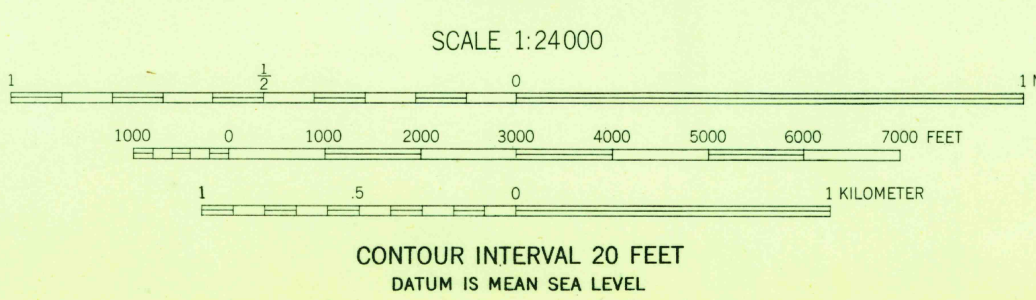
STATE OF MARYLAND
DEPARTMENT OF GEOLOGY, MINES, AND WATER RESOURCES
JOSEPH T. SINGEWALD, JR., DIRECTOR

KITZMILLER QUADRANGLE
MARYLAND-WEST VIRGINIA
7.5 MINUTE SERIES (TOPOGRAPHIC)
NW/4 ELK GARDEN 15' QUADRANGLE



Mapped, edited, and published by the Geological Survey
Control by USGS and USC&GS
Topography from aerial photographs by multiple methods
Aerial photographs taken 1946. Field check 1948
Polyconic projection, 1927 North American datum
10,000-foot grid based on Maryland coordinate system, and
West Virginia coordinate system, north zone
Extent of state forest areas uncertain

TRUE NORTH
MAGNETIC NORTH
APPROXIMATE MEAN
DECLINATION, 1948



THIS MAP COMPLIES WITH NATIONAL MAP ACCURACY STANDARDS
FOR SALE BY U. S. GEOLOGICAL SURVEY, WASHINGTON 25, D. C.

USGS
Historical File
Topographic Division
WOODLAND
Orchard

ROAD CLASSIFICATION
HARD-SURFACE ALL WEATHER ROADS DRY WEATHER ROADS
Heavy-duty 4 LANE 16 LANE Improved dirt
Medium-duty 4 LANE 16 LANE Unimproved dirt
Loose-surface, graded, or narrow hard-surface
U. S. Route State Route

U. S. G. S.
FILE COPY
Inspection and Editing

KITZMILLER, MD.-W.VA.
NW/4 ELK GARDEN 15' QUADRANGLE
N3922.5-W7907.5/7.5

EDITION OF 1950

JAN 11 1950

3125